

Product datasheet for **RC206682**

STOML3 (NM_145286) Human Tagged ORF Clone

Product data:

Product Type:	Expression Plasmids
Product Name:	STOML3 (NM_145286) Human Tagged ORF Clone
Tag:	Myc-DDK
Symbol:	STOML3
Synonyms:	Epb7.2l; SRO
Mammalian Cell Selection:	Neomycin
Vector:	pCMV6-Entry (PS100001)
E. coli Selection:	Kanamycin (25 ug/mL)
ORF Nucleotide Sequence:	>RC206682 ORF sequence Red=Cloning site Blue=ORF Green=Tags(s)

TTTTGTAATACGACTCACTATAGGGCGCCGGGAATTCGTCGACTGGATCCGGTACCGAGGAGATCTGCC
GCC**CGGATCGCC**

ATGGATTCTAGGGTGTCTTCACCTGAGAAGCAAGATAAAGAGAATTCGTGGGTGTCAACAATAAACGGC
TTGGTGTATGTGGCTGGATCCTGTTTTCCCTCTCTTTCTGTTGGTGATCATTACCTTCCCCATCTCCAT
ATGGATGTGCTTGAAGATCATTAAAGGAGTGAACGTGCTGTTGTATTCCGTCTGGGACGCATCCAAGCT
GACAAAGCCAAGGGGCCAGGTTTGATCCTGGTCTGCCATGCATAGATGTGTTTGTCAAAGTTGACCTCC
GAACAGTTACTTGCAACATTCCTCCACAAGAGATCCTCACCAGAGACTCCGTAACACTACTCAGGTAGATGG
AGTTGTCTATTACAGAATCTATAGTGCTGTCTCAGCAGTGCGTAATGTCAACGATGTCCATCAAGCAACA
TTTCTGCTGGCTCAAACCACTCTGAGAAATGTCTTAGGGACACAGACCTTGTCCCAGATCTTAGCTGGAC
GAGAAGAGATCGCCCATAGCATCCAGACTTTACTTGATGATGCCACCGAACTGTGGGGGATCCGGGTGGC
CCGAGTGGAAATCAAAGATGTTCCGATTCCCGTGCAGTTGCAGAGATCCATGGCAGCCGAGGCTGAGGCC
ACCCGGGAAGCGAGAGCCAAGGTCTTGCAGCTGAAGGAGAAATGAATGCTTCCAATCCCTGAAGTCAG
CCTCCATGGTGTGGCTGAGTCTCCCATAGCTCTCCAGCTGCGCTACCTGCAGACCTTGAGCACGGTAGC
CACCGAGAAGAATTCTACGATTGTGTTTCTCTGCCCATGAATATACTAGAGGGCATTGGTGGCGTCAGC
TATGATAACCACAAGAAGCTTCCAATAAAGCC

ACGCGTACGCGGCCGCTCGAGCAGAAACTCATCTCAGAAGAGGATCTGGCAGCAAATGATATCCTGGATT
ACAAGGATGACGACGATAAGGTTTAA



[View online »](#)

Protein Sequence: >RC206682 protein sequence
Red=Cloning site Green=Tags(s)

MDSRVSSPEKQDKENFVGVNKRLLGVCWILFSLFLLVIITFPISIWMLKIIKEYERAVVFRLGRIQA
 DKAKGPGILVLPCIDVFVKVLDLRTVTCNIPPQEILTRDSVTTQVDGVVYRIYSAVSAPANVNDVHQAT
 FLLAQTTLRNVLGTQTLSQLAGREEIAHSIQTLDDATELWGI RVARVEIKDVRIPVQLQRSM AEA
 TREARAKVLA AEGEMNASKSLKSASMLVAESPIALQLRYLQTLSTVATEKNSTIVFPLPMNILEGIGGVS
 YDNHKKLPNKA

TRTRPLEQKLISEEDLAANDILDYKDDDDKV

Chromatograms: https://cdn.origene.com/chromatograms/mk6327_h12.zip

Restriction Sites: SgfI-MluI

Cloning Scheme:

Cloning sites used for ORF Shuttling:



* The last codon before the Stop codon of the ORF

ACCN: NM_145286

ORF Size: 873 bp

OTI Disclaimer: The molecular sequence of this clone aligns with the gene accession number as a point of reference only. However, individual transcript sequences of the same gene can differ through naturally occurring variations (e.g. polymorphisms), each with its own valid existence. This clone is substantially in agreement with the reference, but a complete review of all prevailing variants is recommended prior to use. [More info](#)

OTI Annotation: This clone was engineered to express the complete ORF with an expression tag. Expression varies depending on the nature of the gene.

Components: The ORF clone is ion-exchange column purified and shipped in a 2D barcoded Matrix tube containing 10ug of transfection-ready, dried plasmid DNA (reconstitute with 100 ul of water).

Reconstitution Method:

1. Centrifuge at 5,000xg for 5min.
2. Carefully open the tube and add 100ul of sterile water to dissolve the DNA.
3. Close the tube and incubate for 10 minutes at room temperature.
4. Briefly vortex the tube and then do a quick spin (less than 5000xg) to concentrate the liquid at the bottom.
5. Store the suspended plasmid at -20°C. The DNA is stable for at least one year from date of shipping when stored at -20°C.

RefSeq: [NM_145286.3](#)

RefSeq Size: 1936 bp

RefSeq ORF: 876 bp

Locus ID: 161003

UniProt ID: [Q8TAV4](#)

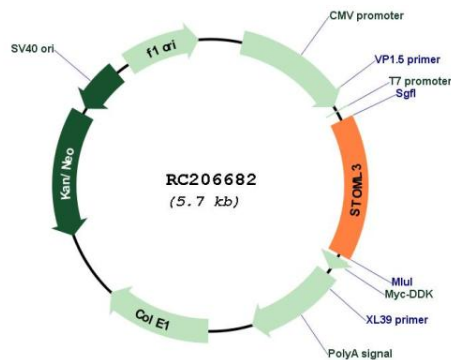
Cytogenetics: 13q13.3

Protein Families: Transmembrane

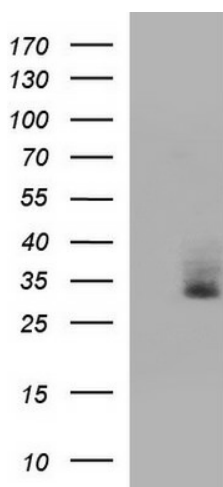
MW: 32.1 kDa

Gene Summary: Required for the function of many mechanoreceptors. Modulate mechanotransduction channels and acid-sensing ion channels (ASIC) proteins. Potentiates PIEZO1 and PIEZO2 function by increasing their sensitivity to mechanical stimulations.[UniProtKB/Swiss-Prot Function]

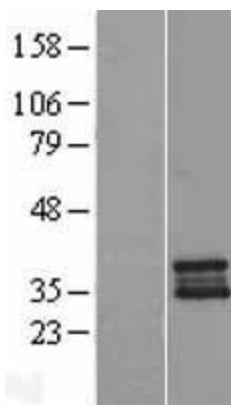
Product images:



Circular map for RC206682



HEK293T cells were transfected with the pCMV6-ENTRY control (Cat# [PS100001], Left lane) or pCMV6-ENTRY STOML3 (Cat# RC206682, Right lane) cDNA for 48 hrs and lysed. Equivalent amounts of cell lysates (5 ug per lane) were separated by SDS-PAGE and immunoblotted with anti-STOML3 (Cat# [TA590398]). Positive lysates [LY408009] (100ug) and [LC408009] (20ug) can be purchased separately from OriGene.



Western blot validation of overexpression lysate (Cat# [LY408009]) using anti-DDK antibody (Cat# [TA50011-100]). Left: Cell lysates from untransfected HEK293T cells; Right: Cell lysates from HEK293T cells transfected with RC206682 using transfection reagent MegaTran 2.0 (Cat# [TT210002]).