

Product datasheet for RC206677

SLC22A24 (NM_173586) Human Tagged ORF Clone

Product data:

Product Type:	Expression Plasmids
Product Name:	SLC22A24 (NM_173586) Human Tagged ORF Clone
Tag:	Myc-DDK
Symbol:	SLC22A24
Synonyms:	NET46
Mammalian Cell Selection:	Neomycin
Vector:	pCMV6-Entry (PS100001)
E. coli Selection:	Kanamycin (25 ug/mL)
ORF Nucleotide Sequence:	>RC206677 ORF sequence Red=Cloning site Blue=ORF Green=Tags(s)

TTTTGTAATACGACTCACTATAGGGCGGCCGGAATTCGTCGACTGGATCCGGTACCGAGGAGATCTGCC
GCC**CGATCGCC**

ATGGGCTTTGATGTGCTCCTGGATCAAGTGGTGGCATGGGGAGATTCCAGATTTGTCTGATAGCTTTCT
TTTGCATACCAACATCCTACTGTTCCCTAATATTGTGTTGGAGAACTTCACTGCATTCACCCCTAGTCA
TCGCTGCTGGTCCCCCTCCTGGACAATGACAGTGTGTCTGACAATGATACCGGGACCCTCAGCAAGGAT
GACCTCCTGAGAATCTCCATCCCCTGGACTCAAACCTGAGGCCACAGAAGTGTGAGCGCTTTATCCATC
CCCAGTGGCAGCTCCTTACCTGAACGGGACCTCCCCAACACAATGAGCCAGACACGGAGCCCTGTGT
GGATGGCTGGGTGTACGACAGAAGCTTTTCTCTCCACCATCGTGACTGAGTGGGACCTGGTATGTGAA
TCTCAGTCACTAAAATCAATGGTTCAATCCCTATTTATGGCTGGGTCAGTCTGGGAGGTCTAATATATG
GCCATCTTTCAGACAGGGTTGGACGGAAGATCATATGCAAATTGTGTTTCTCCAGCTGGCCATCTCTAA
CACCTGTGCGGCCTTCGCTCCCACCTTCTTGTACTGCATACTGCGCTTCTTGGCAGGGTTCTCCACC
ATGACTATTTGGGAAACACTTTTATTCTCAGCTTAGAGTGGACATTGCCCGGTACGATCTATGACAA
TAATGGTGCTATTATGTTCTACAGTGTGGGCAGATGCTCCTAGGAGGGCTGGCTTTTCCATTGAGCA
CTGGCAGATTTGCAACTGACTGTGTCTACACCATAATTGTCTCTTCTTGTCTTGGTATGAACAA
TCTCCACATTTCTTGCCTGTAAGCGAGGCTATGGTAGACATAGAAAGGAAAATTGTGACACCTGGGATCT
GTTCCGCTCTGGCCTAGTCTGAGCCATGATGTCCATAGTACCTATTGTGTACC

ACGCGTACGCGGCCGCTCGAGCAGAAACTCATCTCAGAAGAGGATCTGGCAGCAAATGATATCCTGGATT
ACAAGGATGACGACGATAAGGTTTAA



[View online »](#)

Protein Sequence: >RC206677 protein sequence
Red=Cloning site Green=Tags(s)

MGFDVLLDQVGGMGRFQICLIAFFCITNILLFPNIVLENFTAFTPSHRCWVPLLDNDSVSDNDTGTLSKD
 DLLRISIPLDNSLRPQKCQRFIHPQWQLLHLNGTFPNTNEPDTEPCVDGWVYDRSSFLSTIVTEWDLVCE
 SSQLKSMVQSLFMAGSLLGGLIYGHLSDRVGRKIICKLFLQLAISNTCAAFAPFTLVYICILRFLAGFST
 MTILGNTFILSLEWTLPRSRSMTIMVLLCSYSVGMQLLGLLAFIAIQDWHILQLTVSTPIIVLFLSSWYEQ
 SPHSPLPVSEAMVDIERKIIVTPGICSVSGLVLSHDVHSTYCVT

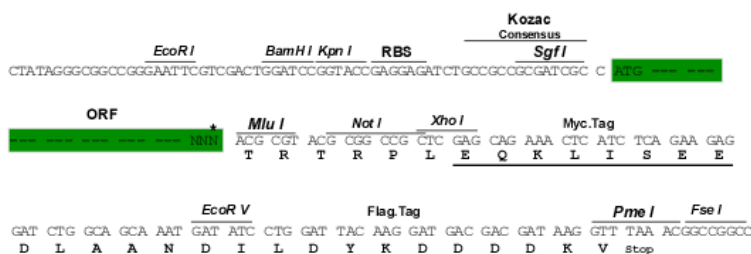
TRTRPLEQKLISEEDLAANDILDYKDDDDKV

Chromatograms: https://cdn.origene.com/chromatograms/mk6520_a05.zip

Restriction Sites: SgfI-MluI

Cloning Scheme:

Cloning sites used for ORF Shuttling:



* The last codon before the Stop codon of the ORF

ACCN: NM_173586

ORF Size: 966 bp

OTI Disclaimer: The molecular sequence of this clone aligns with the gene accession number as a point of reference only. However, individual transcript sequences of the same gene can differ through naturally occurring variations (e.g. polymorphisms), each with its own valid existence. This clone is substantially in agreement with the reference, but a complete review of all prevailing variants is recommended prior to use. [More info](#)

OTI Annotation: This clone was engineered to express the complete ORF with an expression tag. Expression varies depending on the nature of the gene.

Components: The ORF clone is ion-exchange column purified and shipped in a 2D barcoded Matrix tube containing 10ug of transfection-ready, dried plasmid DNA (reconstitute with 100 ul of water).

Reconstitution Method:

1. Centrifuge at 5,000xg for 5min.
2. Carefully open the tube and add 100ul of sterile water to dissolve the DNA.
3. Close the tube and incubate for 10 minutes at room temperature.
4. Briefly vortex the tube and then do a quick spin (less than 5000xg) to concentrate the liquid at the bottom.
5. Store the suspended plasmid at -20°C. The DNA is stable for at least one year from date of shipping when stored at -20°C.

RefSeq: [NM_173586.1](#), [NP_775857.1](#)

RefSeq Size: 1685 bp

RefSeq ORF: 969 bp

Locus ID: 283238

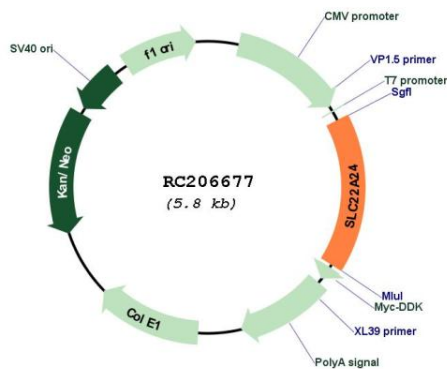
UniProt ID: [Q8N4F4](#)

Cytogenetics: 11q12.3

MW: 35.9 kDa

Gene Summary: SLC22A24 belongs to a large family of transmembrane proteins that function as uniporters, symporters, and antiporters to transport organic ions across cell membranes (Jacobsson et al., 2007 [PubMed 17714910]).[supplied by OMIM, Mar 2008]

Product images:



Circular map for RC206677