

Product datasheet for **RC206676**

Secretory lectin ZG16 (ZG16) (NM_152338) Human Tagged ORF Clone

Product data:

Product Type:	Expression Plasmids
Product Name:	Secretory lectin ZG16 (ZG16) (NM_152338) Human Tagged ORF Clone
Tag:	Myc-DDK
Symbol:	Secretory lectin ZG16
Synonyms:	JCLN; JCLN1; ZG16A
Mammalian Cell Selection:	Neomycin
Vector:	pCMV6-Entry (PS100001)
E. coli Selection:	Kanamycin (25 ug/mL)
ORF Nucleotide Sequence:	>RC206676 ORF sequence Red=Cloning site Blue=ORF Green=Tags(s)

TTTTGTAATACGACTCACTATAGGGCGGCCGGAATTCGTCGACTGGATCCGGTACCGAGGAGATCTGCC
GCC**CGATCGCC**

ATGTTGACAGTCGCTCTCCTAGCCCTTCTCTGTGCCTCAGCCTCTGGCAATGCCATTCAGGCCAGGTCTT
CCTCCTATAGTGGAGAGTATGGAAGTGGTGGTGGAAAGCGATTCTCTCATTCTGGCAACAGTTGGACGG
CCCCATCACCGCCCTCCGGTCCGAGTCAACACATACTACATCGTAGGTCTTCAGGTGCGCTATGGCAAG
GTGTGGAGCGACTATGTGGTGGTGCACCGGAGACCTGGAGGAGATCTTCTGCACCCTGGGAATCAG
TGATCCAGTTTCTGGGAAGTACAAGTGGTACCTGAAGAAGCTGGTATTTGTGACAGACAAGGGCCGCTA
TCTGTCTTTGGAAAGACAGTGGCACAAGTTCAATGCCGTCCCCTTGACCCCAACACCGTGCCTCCG
TTCATCAGTGGCCGGTCTGGTTCTCTCATCGATGCCATTGGCCTGCACTGGGATGTTACCCCACTAGCT
GCAGCAGATGC

ACGCGTACGCGGCCGCTCGAGCAGAACTCATCTCAGAAGAGGATCTGGCAGCAAATGATATCCTGGATT
ACAAGGATGACGACGATAAGGTTTAA

Protein Sequence:	>RC206676 protein sequence Red=Cloning site Green=Tags(s)
-------------------	--

MLTVALLALLCASASGNAIQARSSSYSGEYSGGGKRFSHSGNQLDGPITALRVRVNTYYIVGLQVRYGK
VWSDYVGGRNGDLEEIFLHPGESVIQVSGKYKWLKLVFVTDKGRYLSFGKDSGTSFNAPVLPNTVLR
FISGRSGLIDAIGLHWDVYPTSCSRC

TRTRPLEQKLISEEDLAANDILDYKDDDDKV

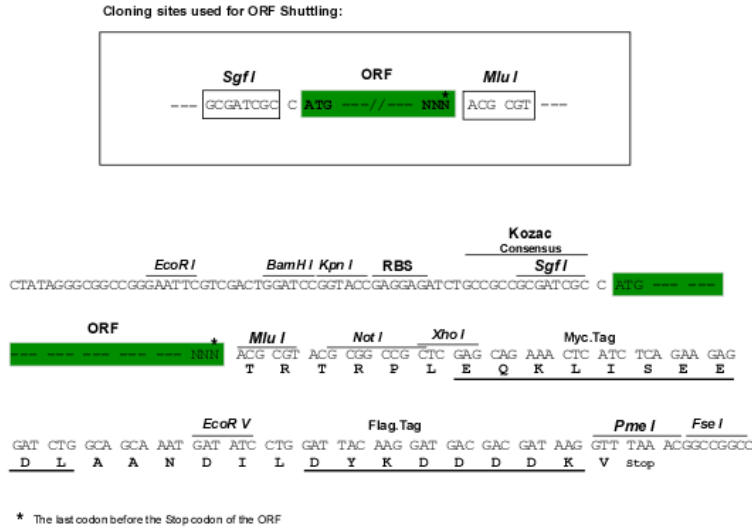
Chromatograms:	https://cdn.origene.com/chromatograms/mk6520_a06.zip
----------------	---



[View online »](#)

Restriction Sites: SgfI-MluI

Cloning Scheme:



ACCN: NM_152338

ORF Size: 501 bp

OTI Disclaimer: The molecular sequence of this clone aligns with the gene accession number as a point of reference only. However, individual transcript sequences of the same gene can differ through naturally occurring variations (e.g. polymorphisms), each with its own valid existence. This clone is substantially in agreement with the reference, but a complete review of all prevailing variants is recommended prior to use. [More info](#)

OTI Annotation: This clone was engineered to express the complete ORF with an expression tag. Expression varies depending on the nature of the gene.

Components: The ORF clone is ion-exchange column purified and shipped in a 2D barcoded Matrix tube containing 10ug of transfection-ready, dried plasmid DNA (reconstitute with 100 ul of water).

Reconstitution Method:

1. Centrifuge at 5,000xg for 5min.
2. Carefully open the tube and add 100ul of sterile water to dissolve the DNA.
3. Close the tube and incubate for 10 minutes at room temperature.
4. Briefly vortex the tube and then do a quick spin (less than 5000xg) to concentrate the liquid at the bottom.
5. Store the suspended plasmid at -20°C. The DNA is stable for at least one year from date of shipping when stored at -20°C.

RefSeq: [NM_152338.2](#)

RefSeq Size: 1806 bp

RefSeq ORF: 504 bp

Locus ID: 653808

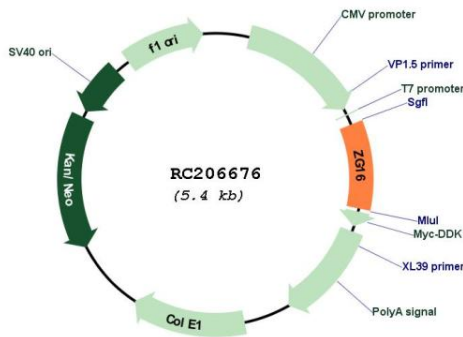
UniProt ID: [O60844](#)

Cytogenetics: 16p11.2

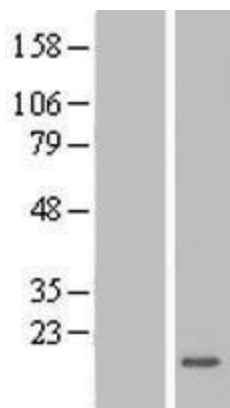
MW: 18.2 kDa

Gene Summary: May play a role in protein trafficking. May act as a linker molecule between the submembranous matrix on the luminal side of zymogen granule membrane (ZGM) and aggregated secretory proteins during granule formation in the TGN.[UniProtKB/Swiss-Prot Function]

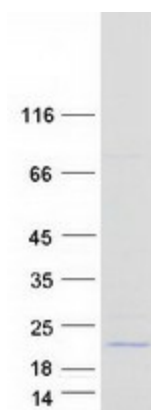
Product images:



Circular map for RC206676



Western blot validation of overexpression lysate (Cat# [LY407589]) using anti-DDK antibody (Cat# [TA50011-100]). Left: Cell lysates from untransfected HEK293T cells; Right: Cell lysates from HEK293T cells transfected with RC206676 using transfection reagent MegaTran 2.0 (Cat# [TT210002]).



Coomassie blue staining of purified ZG16 protein (Cat# [TP306676]). The protein was produced from HEK293T cells transfected with ZG16 cDNA clone (Cat# RC206676) using MegaTran 2.0 (Cat# [TT210002]).