

Product datasheet for **RC206672**

C11orf42 (NM_173525) Human Tagged ORF Clone

Product data:

Product Type:	Expression Plasmids
Product Name:	C11orf42 (NM_173525) Human Tagged ORF Clone
Tag:	Myc-DDK
Symbol:	C11orf42
Mammalian Cell Selection:	Neomycin
Vector:	pCMV6-Entry (PS100001)
E. coli Selection:	Kanamycin (25 ug/mL)
ORF Nucleotide Sequence:	>RC206672 ORF sequence Red=Cloning site Blue=ORF Green=Tags(s)

TTTTGTAATACGACTCACTATAGGGCGGCCGGGAATTCGTCGACTGGATCCGGTACCGAGGAGATCTGCC
GCC**CGATCGCC**

ATGTTGGTGGGTACCCCAACCTGCTGACACTGGATGAAGCTGATGCCACCTGGACCCTCATCAAGGATA
AGGTCATCGAGGAGCACTTTGGGCCAATGCAGTAGCAGTACCTTTCCTGTCAGATGCAGCCTGCTATGA
CCTACTGGGTGTGCTGGTAAAACAGTCCCGCCAGCCCATACCCGCCTGGCTTTGCCAGGTCGGCAGGGC
CGGAGGGCACTGAAACCAGTGGGGCCACTACCAAGCCTCCTGGAGCAGGCAGGATCTGAGGGTGCCTTCG
CCCCTGCACTCGGGAATACTACCAAAATGGCCGAGCAGAGAGAGCCTATGAAGAGACCGAATGTTGGA
TGACAGCCCTGCAAGATCCGCCTACATATGGGTGACCTGCGCAAGAAGTTGCCTTCTGTTGCTGCCA
CCAGGGCAGGTGAGCCTACAGCAGACTTTCCTGGCTCCGAAGCACCCACAGCATCTATGTCATCTACC
AGGTCTTCTCTTGTCTGGCTGCAGCTGGGGCTGACGCTACAGCCCGTGGAGCCCGAGCTCCTCCGGCT
ACTTCGGTCATTACCTGTTGCCTTCTCCTGCCTCAAGTTTTCACTGCAGTCTAAGGGCGTCTGGGACCA
CAGAAGCCTCTACTAAAGACCCATTGCCCATGGGGCCAAGTGGTCCAGACCAACCTCAGCATCATGC
CGCCTCTGGCCCCACATCAGCATCTGCTGATACTGAAGCTGCTGATGTGCCCCACCTGTCCCAGC
CCCACCTACGCCACCTCCCAGGAAGGGCCAGAGGACAAACCCACCAGATTCTCTACAAGGGCCGAAAC
CCCTTCTGAGGGGGCCAGATACTGTGACAGAACTGGCTCTTACGCCCCGACGCCCTCCACCAGGAG
CCAGGGTGGGGGCCAGGGACCCGACGGGCACTCCATGTCCCTGCCCTGCTGCAGGGTCTATCCTC
AGAGTTCGACAGTGACGAC

ACGCGTACGCGGCCGCTCGAGCAGAACTCATCTCAGAAGAGGATCTGGCAGCAAATGATATCCTGGATT
ACAAGGATGACGACGATAAGGTTTAA



[View online »](#)

Protein Sequence: >RC206672 protein sequence
Red=Cloning site Green=Tags(s)

MLVGTPNLLTLDEADATWTLIKDKVIEEHFGPNAVAVPFLSDAACDYLGLVKQSRPAHTRLALPGRQG
 RRALKPVGPLPSLLEQAGSEGAFAHCTREYSPNGRAERAYEETRMLDGGPCKIRLHMGLRKKVAFLLLP
 PGQVSLQQTLPWLRSTHSIYVIYQVFSWSLQLGLTSTAREPQLLRLLRSLPVAFSCLKFSLSQSKGVLGP
 QKPLTKDPLPHGANWVRPNLSIMPPLAPTSASADTTEAADVPPPVPAPPTPPPQEGPEDKPTRFSYKGRN
 PFWRGPQILSENWLFSPRSPPPGAQGGGPRDPDGHMSMLPLLQGLSSEFDSD

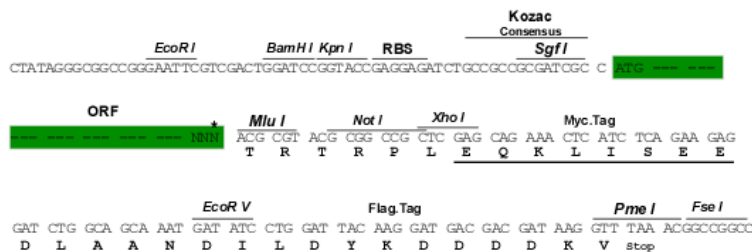
TRTRPLEQKLISEEDLAANDILDYKDDDDKV

Chromatograms: https://cdn.origene.com/chromatograms/mk6727_a03.zip

Restriction Sites: Sgfl-MluI

Cloning Scheme:

Cloning sites used for ORF Shuttling:



* The last codon before the Stop codon of the ORF

ACCN: NM_173525

ORF Size: 999 bp

OTI Disclaimer: The molecular sequence of this clone aligns with the gene accession number as a point of reference only. However, individual transcript sequences of the same gene can differ through naturally occurring variations (e.g. polymorphisms), each with its own valid existence. This clone is substantially in agreement with the reference, but a complete review of all prevailing variants is recommended prior to use. [More info](#)

OTI Annotation: This clone was engineered to express the complete ORF with an expression tag. Expression varies depending on the nature of the gene.

Components: The ORF clone is ion-exchange column purified and shipped in a 2D barcoded Matrix tube containing 10ug of transfection-ready, dried plasmid DNA (reconstitute with 100 ul of water).

Reconstitution Method:

1. Centrifuge at 5,000xg for 5min.
2. Carefully open the tube and add 100ul of sterile water to dissolve the DNA.
3. Close the tube and incubate for 10 minutes at room temperature.
4. Briefly vortex the tube and then do a quick spin (less than 5000xg) to concentrate the liquid at the bottom.
5. Store the suspended plasmid at -20°C. The DNA is stable for at least one year from date of shipping when stored at -20°C.

RefSeq: [NM_173525.1](#), [NP_775796.1](#)

RefSeq Size: 1149 bp

RefSeq ORF: 1002 bp

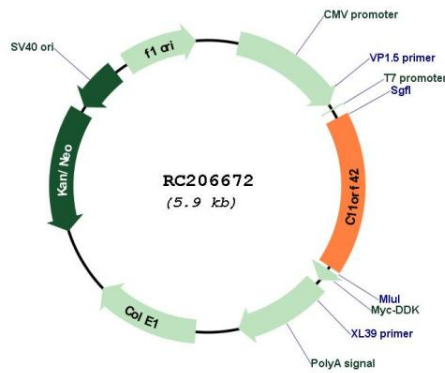
Locus ID: 160298

UniProt ID: [Q8N5U0](#)

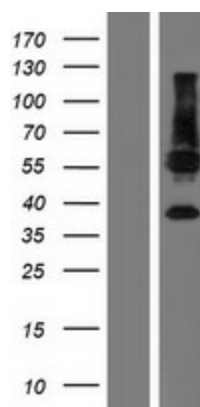
Cytogenetics: 11p15.4

MW: 36.4 kDa

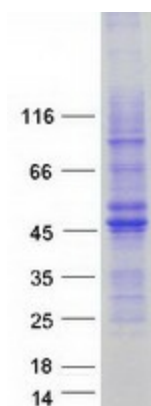
Product images:



Circular map for RC206672



Western blot validation of overexpression lysate (Cat# [LY406454]) using anti-DDK antibody (Cat# [TA50011-100]). Left: Cell lysates from untransfected HEK293T cells; Right: Cell lysates from HEK293T cells transfected with RC206672 using transfection reagent MegaTran 2.0 (Cat# [TT210002]).



Coomassie blue staining of purified C11orf42 protein (Cat# [TP306672]). The protein was produced from HEK293T cells transfected with C11orf42 cDNA clone (Cat# RC206672) using MegaTran 2.0 (Cat# [TT210002]).