

Product datasheet for **RC206671**

IZUMO1 (NM_182575) Human Tagged ORF Clone

Product data:

Product Type:	Expression Plasmids
Product Name:	IZUMO1 (NM_182575) Human Tagged ORF Clone
Tag:	Myc-DDK
Symbol:	IZUMO1
Synonyms:	IZUMO; OBF
Mammalian Cell Selection:	Neomycin
Vector:	pCMV6-Entry (PS100001)
E. coli Selection:	Kanamycin (25 ug/mL)
ORF Nucleotide Sequence:	>RC206671 ORF sequence Red=Cloning site Blue=ORF Green=Tags(s)

TTTTGTAATACGACTCACTATAGGGCGGCCGGAATTCGTCGACTGGATCCGGTACCGAGGAGATCTGCC
GCC**CGCATCGCC**

ATGGGGCCGCATTTTACCCTCCTGTGTGCGGGCGTGGCCGGTTGCTTGCTTCTGCCGAGGGGTGTGTTA
TATGTGACCCGTCTGTCGTGCTGGCGCTAAAGTCCCTGGAGAAAGATTACCTGCCTGGCCACCTGGATGC
GAAGCATCACAAGCCATGATGGAAGGGTAGAGAATGCCGTGAAGGATTTCCAGGAAGTGTGCTTAAT
GAGGATGCCTATATGGGGTTCGTTGATGAGGCCACACTGCAAAAGGGTCTGGAGTTTGTGAAGGATC
TGAAACGCATCACAGACAGTGTGTAAGGCGATCTCTTTGTGAAGGAGCTATTTGGATGTTGCACTT
GCAAAAGGAAACCTTTGCCACCTATGTTGCTCGATTCCAAAAAGAGGCTTATTGTCCAACAATGTGGT
GTGATGTTGCAAACTCTGATCTGGTGAAGAACTGCAAAAGGAGTTTACGCTTGTGCAAAAGTCCACG
ATTGCGGGGAGCGGAATGTGAAGTTTCTCAAATGGAAGACATGATCCTGGACTGTGAGTTAAACTGGCA
TCAGGCTTCGGAAGGCCCTCACTGATTACAGCTTTTACAGGGTTTGGGGGAACAATACGGAGACCTTGGTG
TCCAAGGGGAAAGAGGCCACCCTGACCAAGCCCATGGTGGTCCAGAGGATGCAGGCAGTACCCTGCG
AGCTGGCTCTGTGAATCCAGCCAGCCACGATCATCAATTTTACGTACAGTGTGCCCCAAATGAT
CAAGGAGGAAAAACCTTCTCAAATATCGTAACCCGGGGGAGGCCAGCCAGGAGTGTCCATAAGCCTC
CAGCCTCTGCAGCCCAGAAAAATGCTGGCAAGCCGCTTCTGGGGCTGCTGATCTGCGGCTCCCTAGCAC
TGATAACCGCCTTACCTTTGCGATATTCGTGCAAGGAAGGTGATCGATTTTCATCAAATCCTCACTGTT
TGGCCTTGGCAGTGGAGTTGCCGAGCAAACCCAGGTCCAAAAAGAAAAGGCCACAGATTCGAGGCAACAA

ACGCGTACGCGGCCGCTCGAGCAGAAACTCATCTCAGAAGAGGATCTGGCAGCAAATGATATCCTGGATT
ACAAGGATGACGACGATAAGGTTTAA



[View online »](#)

Reconstitution Method:

1. Centrifuge at 5,000xg for 5min.
2. Carefully open the tube and add 100ul of sterile water to dissolve the DNA.
3. Close the tube and incubate for 10 minutes at room temperature.
4. Briefly vortex the tube and then do a quick spin (less than 5000xg) to concentrate the liquid at the bottom.
5. Store the suspended plasmid at -20°C. The DNA is stable for at least one year from date of shipping when stored at -20°C.

RefSeq: [NM_182575.1](#), [NP_872381.1](#)

RefSeq Size: 1621 bp

RefSeq ORF: 1053 bp

Locus ID: 284359

UniProt ID: [Q8IYV9](#)

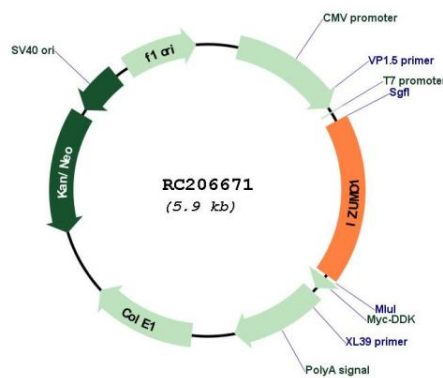
Cytogenetics: 19q13.33

Protein Families: Transmembrane

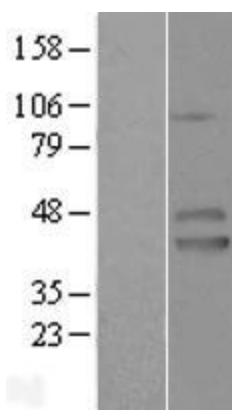
MW: 39 kDa

Gene Summary: The sperm-specific protein Izumo, named for a Japanese shrine dedicated to marriage, is essential for sperm-egg plasma membrane binding and fusion (Inoue et al., 2005 [PubMed 15759005]).[supplied by OMIM, Mar 2008]

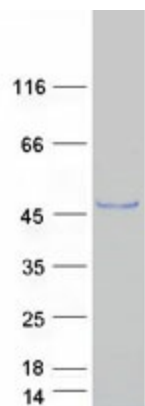
Product images:



Circular map for RC206671



Western blot validation of overexpression lysate (Cat# [LY405465]) using anti-DDK antibody (Cat# [TA50011-100]). Left: Cell lysates from untransfected HEK293T cells; Right: Cell lysates from HEK293T cells transfected with RC206671 using transfection reagent MegaTran 2.0 (Cat# [TT210002]).



Coomassie blue staining of purified IZUMO1 protein (Cat# [TP306671]). The protein was produced from HEK293T cells transfected with IZUMO1 cDNA clone (Cat# RC206671) using MegaTran 2.0 (Cat# [TT210002]).