

## Product datasheet for **RC206668**

### RTL6 (NM\_032287) Human Tagged ORF Clone

#### Product data:

**Product Type:** Expression Plasmids  
**Product Name:** RTL6 (NM\_032287) Human Tagged ORF Clone  
**Tag:** Myc-DDK  
**Symbol:** RTL6  
**Synonyms:** dj1033E15.2; LDOC1L; Mar6; Mart6; SIRH3  
**Mammalian Cell Selection:** Neomycin  
**Vector:** pCMV6-Entry (PS100001)  
**E. coli Selection:** Kanamycin (25 ug/mL)  
**ORF Nucleotide Sequence:** >RC206668 ORF sequence  
**Red=Cloning site Blue=ORF Green=Tags(s)**

TTTTGTAATACGACTCACTATAGGGCGGCCGGAATTCGTCGACTGGATCCGGTACCGAGGAGATCTGCC  
GCC**CGATCGCC**

ATGGTGCAGCCGAGACGTCCAAGCTGAAAGCCAGCCTTGGCAGCGTCTCCGAATGCCAGATGGATG  
ACGTTATTGACACCCTGACCTCCCTGCGCCTACCAACTCGGCGCTGAGGCGGGAGGCTTCCACCCTGCG  
GGCGGAGAAGCCAATCTACCAACATGCTGGAGAGCGTGATGGCAGAGCTGACCTTGTACGCACCAGG  
GCGGGATCCCGGGGCTCTGCAGATCACCCGCCCATCTCCTCAATTACTTCAAACGGGACTCGACCCA  
TGACCACACCTCAACCTCTCTGCCGAGCCCTTTCCGGGGACCCAGGCCGGTTGGCGGGTTCCTGAT  
GCAGATGGACAGATTCATGATCTTCCAGGCCTCCCGCTTCCCGGGTGAGGCCGAGCGTGTGGCCTTCCTT  
GTGTCTCGACTGACTGGGAGGGCGGAGAAGTGGGCTATCCCCACATGCAACCTGACAGCCCTTGC  
CAACAACTATCAGGGTTCCTGGCAGAGTTGCGGAGAACCTACAAGTCTCCGCTCCGGCATGCGCGGCGCGC  
CCAAATCAGGAAGACTTCTGCCTCTAATAGGGCTGTGCGAGAGAGGCAGATGCTCTGCCGCCAGCTGGCC  
TCTGCGGGCACGGGCTTGCCAGTGCATCCAGCTTCCAACGGGACTAGTCCAGCGCCAGCCCTGCCTG  
CCCGAGCACGGAATCTT

**ACGCGT**ACGCGGCCGCTCGAGCAGAACTCATCTCAGAAGAGGATCTGGCAGCAAATGATATCCTGGATT  
ACAAGGATGACGACGATAAGGTTTAA



[View online »](#)



- Reconstitution Method:**
1. Centrifuge at 5,000xg for 5min.
  2. Carefully open the tube and add 100ul of sterile water to dissolve the DNA.
  3. Close the tube and incubate for 10 minutes at room temperature.
  4. Briefly vortex the tube and then do a quick spin (less than 5000xg) to concentrate the liquid at the bottom.
  5. Store the suspended plasmid at -20°C. The DNA is stable for at least one year from date of shipping when stored at -20°C.

**RefSeq:** [NM\\_032287.3](#)

**RefSeq Size:** 5355 bp

**RefSeq ORF:** 720 bp

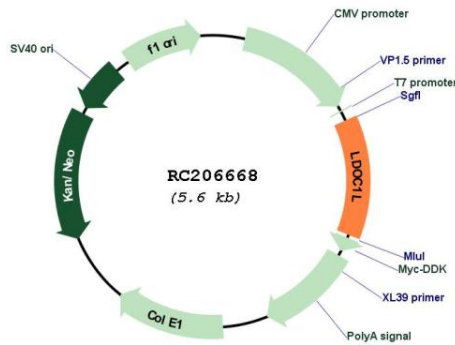
**Locus ID:** 84247

**UniProt ID:** [Q6ICC9](#)

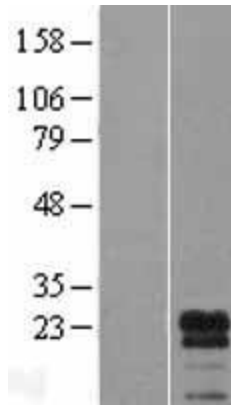
**Cytogenetics:** 22q13.31

**MW:** 26.2 kDa

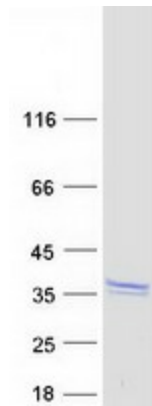
**Product images:**



Circular map for RC206668



Western blot validation of overexpression lysate (Cat# [LY410230]) using anti-DDK antibody (Cat# [TA50011-100]). Left: Cell lysates from untransfected HEK293T cells; Right: Cell lysates from HEK293T cells transfected with RC206668 using transfection reagent MegaTran 2.0 (Cat# [TT210002]).



Coomassie blue staining of purified RTL6 protein (Cat# [TP306668]). The protein was produced from HEK293T cells transfected with RTL6 cDNA clone (Cat# RC206668) using MegaTran 2.0 (Cat# [TT210002]).