

Product datasheet for **RC206667**

NKX2.3 (NKX2-3) (NM_145285) Human Tagged ORF Clone

Product data:

Product Type:	Expression Plasmids
Product Name:	NKX2.3 (NKX2-3) (NM_145285) Human Tagged ORF Clone
Tag:	Myc-DDK
Symbol:	NKX2.3
Synonyms:	CSX3; NK2.3; NKX2.3; NKX2C; NKX4-3
Mammalian Cell Selection:	Neomycin
Vector:	pCMV6-Entry (PS100001)
E. coli Selection:	Kanamycin (25 ug/mL)
ORF Nucleotide Sequence:	>RC206667 representing NM_145285 Red=Cloning site Blue=ORF Green=Tags(s)

TTTTGTAATACGACTCACTATAGGGCGGCCGGAATTCGTCGACTGGATCCGGTACCGAGGAGATCTGCC
GCC**CGATCGCC**

ATGATGTTACCAAGCCCGGTACCTCCACCCCTTCTCAGTCAAAGACATTTTGAATCTGGAGCAGCAGC
ACCAGCACTTCCATGGTGCACCTTGCAGGCGGACTTGGAGCACCCTTCCACTCTGCGCCCTGCATGCT
GGCCGCCCTGAGGGGACGCAATTTTCTGACGGAGGGGAGGAGGACGAGGAAGACGAGGGCGAGAAATTG
TCCTATTTGAACTCACTAGCCGACGACGCGCCACGGGGATTTCAGGGCTGTGTCCCGAGGGCTATGTCC
ACACGGTCTGCGAGACTCGTGCAGCGAGCCCAAGGAACATGAAGAGGAGCCGAGGTCGTGAGGGACCG
GAGCCAAAAAGCTGCCAGCTGAAGAAGTCTCTAGAGACGGCCGGAGACTGCAAGGCGGGGAGGAGAGC
GAGAGGCCGAAGCCACGACGCGCCGGAAGCCCGGGTCTCTTCTCGCAAGCCAGGTCTTCGAGCTGG
AACGCAGGTTCAAGCAGCAGCGGTACCTGTCCGACCCGAGCGCGAGCACCTCGCCAGCAGCCTGAAGCT
CACATCCACTCAGGTGAAAATCTGGTCCAGAATCGCAGGTACAAGTGAAGAGACAGCGGCAGGACAAG
TCTCTGGAGCTTGGCGCACACGCGCCCCCGCCGCCGCGCGCGTGGCTGTCCCGGTGCTGGTGGCGG
ACGGCAAGCCGTGCGTCACGCCCAGCGCGCAGGCTACGGCGCGCCCTACAGCGTGGGCGCCAGCGCCTA
CTCCTACAACAGCTTCCCCGCTACGGCTATGGAACTCGGCCGCGGCCGCGCCGCCGCGCCGCCGCGC
GCCGACAGCGCGGCTACAGCAGCAGCTATGGCTGTGCGTACCCGGCGGGCGGCGCGCGCGCGCGG
CGGGGACCTCCGCGGCGACCACTGCCATGCAGCCGCTGCAGCGCGGCCGAGGCGGCCCTTTGTGAA
CGTGAGCAACCTAGGAGGCTTCGCGAGCGCGGCGAGCGCACAGCCGTTGCACCAGGGTACTGCAGCCGG
GCCGCGTGCCTCAGGGCACCTTGACAGGCATCCGGGCTGG

ACGCGTACGCGGCCGCTCGAGCAGAACTCATCTCAGAAGAGGATCTGGCAGCAATGATATCCTGGATT
ACAAGGATGACGACGATAAGGTTAA



[View online »](#)

Protein Sequence: >RC206667 representing NM_145285
Red=Cloning site Green=Tags(s)

MMLPSPVTSTPFVSKDILNLEQQHQHFHGAHLQADLEHHFHSAPCMLAAAEGTQFSDGGEEDEEDEGEKL
 SYLNSLAAADGHGDSGLCPQGYVHTVLRDSCSEPKEHEEEPEVVRDRSQKSCQLKKSLETAGDCKAAEES
 ERPKPRRRKPRVLFSAQVVFELERRFKQQRYSAPEREHLASSLKLSTQVKIWFQNRRYKCKRQRQDK
 SLELGAHAPPPRRRVAVPVLVRDGKPCVTPSAQAYGAPYSVGASAYSNSFPAYGYGNSAAAAAAAAA
 AAAAAAYSSSYGCAYPAGGGGGGGTSAATTAMQPACSAAGGGPFVNVSNLGGFGSGGSAQPLHQGTAA
 AACAQGLTQGIRAW

TRTRPLEQKLISEEDLAANDILDYKDDDDKV

Chromatograms: https://cdn.origene.com/chromatograms/mg3468_g02.zip

Restriction Sites: SgfI-MluI

Cloning Scheme:



ACCN: NM_145285

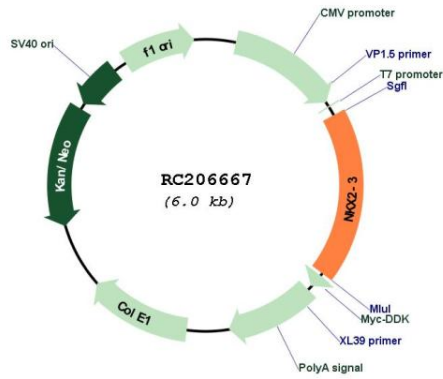
ORF Size: 1092 bp

OTI Disclaimer: Due to the inherent nature of this plasmid, standard methods to replicate additional amounts of DNA in E. coli are highly likely to result in mutations and/or rearrangements. Therefore, OriGene does not guarantee the capability to replicate this plasmid DNA. Additional amounts of DNA can be purchased from OriGene with batch-specific, full-sequence verification at a reduced cost. Please contact our customer care team at custsupport@origene.com or by calling 301.340.3188 option 3 for pricing and delivery.

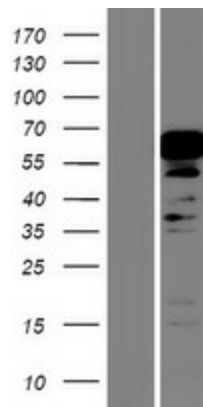
The molecular sequence of this clone aligns with the gene accession number as a point of reference only. However, individual transcript sequences of the same gene can differ through naturally occurring variations (e.g. polymorphisms), each with its own valid existence. This clone is substantially in agreement with the reference, but a complete review of all prevailing variants is recommended prior to use. [More info](#)

OTI Annotation:	This clone was engineered to express the complete ORF with an expression tag. Expression varies depending on the nature of the gene.
Components:	The ORF clone is ion-exchange column purified and shipped in a 2D barcoded Matrix tube containing 10ug of transfection-ready, dried plasmid DNA (reconstitute with 100 ul of water).
Reconstitution Method:	<ol style="list-style-type: none">1. Centrifuge at 5,000xg for 5min.2. Carefully open the tube and add 100ul of sterile water to dissolve the DNA.3. Close the tube and incubate for 10 minutes at room temperature.4. Briefly vortex the tube and then do a quick spin (less than 5000xg) to concentrate the liquid at the bottom.5. Store the suspended plasmid at -20°C. The DNA is stable for at least one year from date of shipping when stored at -20°C.
RefSeq:	NM_145285.3
RefSeq Size:	2117 bp
RefSeq ORF:	1095 bp
Locus ID:	159296
UniProt ID:	Q8TAU0
Cytogenetics:	10q24.2
Domains:	homeobox
Protein Families:	Transcription Factors
MW:	38.2 kDa
Gene Summary:	This gene encodes a homeodomain-containing transcription factor. The encoded protein is a member of the NKX family of homeodomain transcription factors. Studies of similar proteins in mouse and rat have indicated a potential role in cellular differentiation.[provided by RefSeq, Mar 2010]

Product images:



Circular map for RC206667



Western blot validation of overexpression lysate (Cat# [LY408008]) using anti-DDK antibody (Cat# [TA50011-100]). Left: Cell lysates from untransfected HEK293T cells; Right: Cell lysates from HEK293T cells transfected with RC206667 using transfection reagent MegaTran 2.0 (Cat# [TT210002]).