

## Product datasheet for **RC206666**

### OSR1 (NM\_145260) Human Tagged ORF Clone

#### Product data:

Product Type:	Expression Plasmids
Product Name:	OSR1 (NM_145260) Human Tagged ORF Clone
Tag:	Myc-DDK
Symbol:	OSR1
Synonyms:	ODD
Mammalian Cell Selection:	Neomycin
Vector:	pCMV6-Entry (PS100001)
E. coli Selection:	Kanamycin (25 ug/mL)
ORF Nucleotide Sequence:	>RC206666 ORF sequence Red=Cloning site Blue=ORF Green=Tags(s)

TTTTGTAATACGACTCACTATAGGGCGGCCGGAATTCGTCGACTGGATCCGGTACCGAGGAGATCTGCC  
GCC**CGGATCGCC**

ATGGGCAGCAAACCTTGCCGGCGCCGGTGCCTATCCACCCTTCCTGCAGCTCACCAACTACTCCTTCC  
TTCAGGCAGTGAACGGCCTGCCACAGTGCCTTCGGACCATCTGCCAACCTGTATGGTTTCAGCGCGTT  
GCACGCTGTGCACCTGCATCAGTGGACGCTGGGTACCCGGCCATGCACTTGCCGCGCTCTTCTTTCTCC  
AAAGTCCCGGCACGGTGTCCAGCTTGGTGGATGCGCGCTTCCAGCTGCCCGCCTTCCCTGGTTCCCTC  
ATGTCATTCAACCAAGCCGAGATCACCGCTGGAGGCAGCGTTCAGCGCTCAAGACCAAGCCGCGCTT  
TGATTTTGCCAACTGGCCTTGGCAGCAACGCAAGAAGATCCGGCCAAGCTCGGTGCGGGGAGGGCCCA  
GGCTCCCCTGCAGGTGGGCTGGGTGCCCTCCTCGACGTGACCAAGCTGTCTCCAGAAAAGAAGCCACAA  
GGGGACGTCTGCCTTCCAAGACCAAGAAGGAATTCGTCTGCAAGTTCTGTGGCCGCCACTTCACCAAGTC  
CTACAACCTACTTATCCATGAGCGGACGCACACCGACGAGCGCCCTACACCTGTGACATCTGCCACAAA  
GCCTTCCGGAGGCAAGACCACCTGCGAGACCACAGATATTTCACTCCAAAGAGAAGCCCTTCAAGTGC  
AAGAGTGTGGAAAGGATTCTGCCAGTCCAGGACTCTCGTGTCCACAAGACGCTACACTCACAGGTGAA  
GGAGCTCAAACCTCCAAGATCAAATGC

**ACGCGT**ACGCGGCCGCTCGAGCAGAAACTCATCTCAGAAGAGGATCTGGCAGCAAATGATATCCTGGATT  
ACAAGGATGACGACGATAAGGTTTAA



[View online »](#)

**Protein Sequence:** >RC206666 protein sequence  
Red=Cloning site Green=Tags(s)

MGSKTLPAPVPIHPSLQLTNYSFLQAVNGLPTVPSDHLPLNYGFSAHAVHLHQWTLGYPAMHLPRSSF  
 KVPGTVSSLVDARFQLPAFPWFPHVIQPKPEITAGGSVPALKTKPRDFANLALAAATQEDPAKLRGEGP  
 GSPAGGLGALLDVTKLSPKPKTRGRLPSKTKKEFVCKFCGRHFTKSYNLLIHERHTTDERPYTCDICHK  
 AFRRQDHLRDHRYIHSKEKPKFCQECGKGFCSRTLAVHKTLHSQVKELKTSKIKC

TRTRPLEQKLISEEDLAANDILDYKDDDDKV

**Chromatograms:** [https://cdn.origene.com/chromatograms/mk6328\\_g11.zip](https://cdn.origene.com/chromatograms/mk6328_g11.zip)

**Restriction Sites:** SgfI-MluI

**Cloning Scheme:**

Cloning sites used for ORF Shuttling:



\* The last codon before the Stop codon of the ORF

**ACCN:** NM\_145260

**ORF Size:** 798 bp

**OTI Disclaimer:** The molecular sequence of this clone aligns with the gene accession number as a point of reference only. However, individual transcript sequences of the same gene can differ through naturally occurring variations (e.g. polymorphisms), each with its own valid existence. This clone is substantially in agreement with the reference, but a complete review of all prevailing variants is recommended prior to use. [More info](#)

**OTI Annotation:** This clone was engineered to express the complete ORF with an expression tag. Expression varies depending on the nature of the gene.

**Components:** The ORF clone is ion-exchange column purified and shipped in a 2D barcoded Matrix tube containing 10ug of transfection-ready, dried plasmid DNA (reconstitute with 100 ul of water).

**Reconstitution Method:**

1. Centrifuge at 5,000xg for 5min.
2. Carefully open the tube and add 100ul of sterile water to dissolve the DNA.
3. Close the tube and incubate for 10 minutes at room temperature.
4. Briefly vortex the tube and then do a quick spin (less than 5000xg) to concentrate the liquid at the bottom.
5. Store the suspended plasmid at -20°C. The DNA is stable for at least one year from date of shipping when stored at -20°C.

**RefSeq:** [NM\\_145260.3](#)

**RefSeq Size:** 1911 bp

**RefSeq ORF:** 801 bp

**Locus ID:** 130497

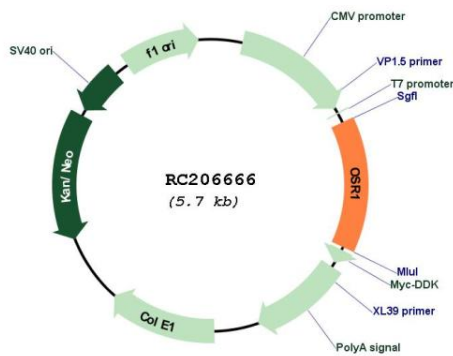
**UniProt ID:** [Q8TAX0](#)

**Cytogenetics:** 2p24.1

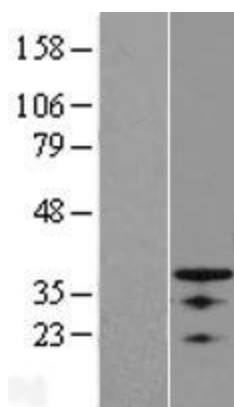
**MW:** 29.6 kDa

**Gene Summary:** Transcription factor that plays a role in the regulation of embryonic heart and urogenital development.[UniProtKB/Swiss-Prot Function]

**Product images:**



Circular map for RC206666



Western blot validation of overexpression lysate (Cat# [LY407986]) using anti-DDK antibody (Cat# [TA50011-100]). Left: Cell lysates from untransfected HEK293T cells; Right: Cell lysates from HEK293T cells transfected with RC206666 using transfection reagent MegaTran 2.0 (Cat# [TT210002]).