

Product datasheet for **RC206665**

SLC39A5 (NM_173596) Human Tagged ORF Clone

Product data:

Product Type:	Expression Plasmids
Product Name:	SLC39A5 (NM_173596) Human Tagged ORF Clone
Tag:	Myc-DDK
Symbol:	SLC39A5
Synonyms:	LZT-Hs7; MYP24; ZIP5
Mammalian Cell Selection:	Neomycin
Vector:	pCMV6-Entry (PS100001)
E. coli Selection:	Kanamycin (25 ug/mL)



[View online »](#)

ORF Nucleotide Sequence:

>RC206665 ORF sequence
 Red=Cloning site Blue=ORF Green=Tags(s)

TTTTGTAATACGACTCACTATAGGGCGGCCGGGAATTCGTCGACTGGATCCGGTACCGAGGAGATCTGCC
 GCC**CGGATCGCC**

ATGGGGTCCCCAGTGAGTCATCTGCTGGCCGGTCTGTGTGTGGTTCGTTGGGCTGGGTAGGGGGCT
 CAGTCCCCAACCTGGGCCCTGCTGAGCAGGAGCAGAACCATTACCTGGCCAGCTGTTTGGCCTGTACGG
 CGAGAATGGGACGCTGACTGCAGGGGGCTTGGCGCGCTTCTCCACAGCCTGGGGCTAGGCCGAGTTCAG
 GGGCTTCGCTGGGACAGCATGGCCTCTGACTGGACGGGCTGCATCCCCAGCTGCAGACAATTCCACAC
 ACAGGCCACAGAACCCTGAGCTGAGTGTGGATGTCTGGCAGGGATGCCTCTGGGTCCCTCAGGGTGGGG
 TGACCTGGAAGAGTCAAAGGCCCTCACCTACCCCGTGGGCCAGCCCCCTCGGGCTGGACCTCCTTCAC
 AGGCTTCTGTTGCTGGACCACTATTGGCTGACCACCTGAATGAGGATTGTCTGAACGGCTCCAGCTGC
 TGGTCAATTTGGCTTGAGCCCCGCTGCTCTGACCCCTCGTCAGTTTGTCTGCTGTGCCAGCCCT
 GCTTTATCAGATCGACAGCCGCTGTCATCGGCCTCCGGCCCTGCACCCCCAGGGGATCTACTATCT
 GCCTGCTTCAGAGTGCCTGGCAGTCTGTTGCTCAGCCTCCCTTCTCCCTATCCCTGCTGCTGCTGC
 GGCTCCTGGGACCTCGTCTACTACGGCCCTTGGTGGGCTTCTGGGGCCCTGGCGGTGGGCACTCTTTG
 TGGGGATGCACTGCTACATCTGCTACCGCATGCACAAGAAGGGCGGCACGCAGGACTGGCGGACTACCA
 GAGAAGGACCTGGGCCCGGGGCTGTCACTGCTCGGAGGCCTTCTCTGCTCTTTGTGCTGGAGAACATGC
 TGGGGCTTTTGGCGCACCGAGGGCTCAGGCCAAGATGCTGCAGGGGAAAACGAAGGAATCTGAAACACG
 CAACTTGATCCGGAGAATGGCAGTGGGATGGCCCTTACGCCCTACAGGCAGCTCCAGAGCCAGGGGCT
 CAGGGCCAGAGGGAGAAGAACAGCCAGCACCCACCAGCTCTGGCCCTCCTGGGCACCAAGGCCACAGTC
 ATGGGCCACAGGGTGGCACTGATATCACGTGGATGGTCTCTCTGGGAGATGGTCTACACAACCTCACTGA
 TGGGCTGGCCATAGGTGCTGCCTTCTCTGATGGCTTCTCCAGCGGCTCAGTACCACCTTAGCGGTCTTC
 TGCCATGAGCTGCCCCACGAAGTGGGTGACTTTGCCATGCTGCTCCAGTCAGGGTGTCTTTTGGCGGC
 TGCTGCTGCTGAGCCTCGTGTCTGGAGCCCTGGGATTGGGGGTGCAGTCTGGGGTGGGGCTCAGCCT
 GGGCCCTGTCCTCCTCACTCCCTGGGTGTTTGGGGTCACTGCTGGGGTCTTCTCTATGTGGCCCTGTG
 GACATGCTACCAGCCCTGCTTCTCCTCCGAGCCCTGCCTACGCCCATGTGCTCCTGCAGGGGCTGG
 GGCTGCTGCTGGGGGCGGCCTCATGCTGCCATAACCCTGCTGGAGGAGCGGCTACTGCCCGTACCAC
 TGAGGGC

ACGCGTACGCGGCCGCTCGAGCAGAAACTCATCTCAGAAGAGGATCTGGCAGCAAATGATATCCTGGATT
 ACAAGGATGACGACGATAAGGTTTAA

Protein Sequence:

>RC206665 protein sequence
 Red=Cloning site Green=Tags(s)

MGSPVSHLLAGFCVWVVLGWVGGVSNLGPAEQEQNHLYAQLFGLYGENGTLTAGGLARLLHSLGLGRVQ
 GLRLGQHGLPTGRAASPAADNSTHRPQNPELSVDVWAGMPLGPSWGDLEESKAPHLPRGPAPSGLDLLH
 RLLLLDHSLADHLNEDCLNGSQLLVNFGLSAAPLTPRQFALLCPALLYQIDSRVICGAPAPAPPGDLLS
 ALLQSALAVLLLSPSPSLLLLLRLLGPRLRPLLGFLLGALAVGTLCGDALLHLLPHAQEGRHAGPGGLP
 EKDLGPGLSVLGGLFLLFVLENMLGLLRHRGLRPRCCRRKRRNLETRNLDPENSGMALQPLQAPEPGA
 QGQREKNSQHPPALAPPGHQGHSHGHQGGTDITWMVLLGDGLHNLTDGLAIGAAFSDGFSGLSTLAVF
 CHELPHELGDFAMLLQSGLSFRLLLLSLVSGALGLGGAVLGVGLSLGPVPLTPWVFGVTAGVFLYVALV
 DMLPALLRPPEPLTPHVLLQGLLLLLGGGLMLAITLLEERLLPVTTEG

TRTRPLEQKLISEEDLAANDILDYKDDDDKV

Chromatograms:

https://cdn.origene.com/chromatograms/mk6328_c02.zip

Restriction Sites:

Sgfl-Mlul

Cloning Scheme:



ACCN: NM_173596

ORF Size: 1617 bp

OTI Disclaimer: The molecular sequence of this clone aligns with the gene accession number as a point of reference only. However, individual transcript sequences of the same gene can differ through naturally occurring variations (e.g. polymorphisms), each with its own valid existence. This clone is substantially in agreement with the reference, but a complete review of all prevailing variants is recommended prior to use. [More info](#)

OTI Annotation: This clone was engineered to express the complete ORF with an expression tag. Expression varies depending on the nature of the gene.

Components: The ORF clone is ion-exchange column purified and shipped in a 2D barcoded Matrix tube containing 10ug of transfection-ready, dried plasmid DNA (reconstitute with 100 ul of water).

- Reconstitution Method:
1. Centrifuge at 5,000xg for 5min.
 2. Carefully open the tube and add 100ul of sterile water to dissolve the DNA.
 3. Close the tube and incubate for 10 minutes at room temperature.
 4. Briefly vortex the tube and then do a quick spin (less than 5000xg) to concentrate the liquid at the bottom.
 5. Store the suspended plasmid at -20°C. The DNA is stable for at least one year from date of shipping when stored at -20°C.

RefSeq: [NM_173596.1](#), [NP_775867.1](#)

RefSeq Size: 2015 bp

RefSeq ORF: 1623 bp

Locus ID: 283375

UniProt ID: [Q6ZMH5](#)

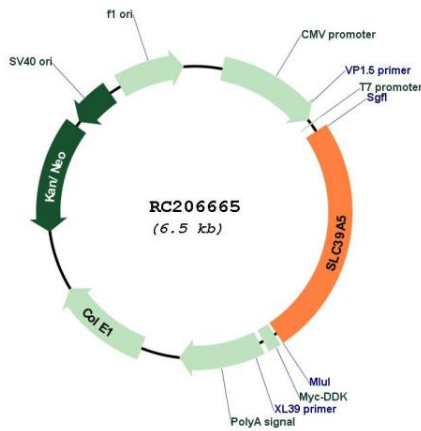
Cytogenetics: 12q13.3

Protein Families: Transmembrane

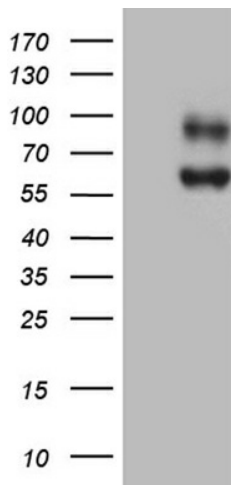
MW: 56.3 kDa

Gene Summary: The protein encoded by this gene belongs to the ZIP family of zinc transporters that transport zinc into cells from outside, and play a crucial role in controlling intracellular zinc levels. Zinc is an essential cofactor for many enzymes and proteins involved in gene transcription, growth, development and differentiation. Mutations in this gene have been associated with autosomal dominant high myopia (MYP24). Alternatively spliced transcript variants have been found for this gene. [provided by RefSeq, Sep 2014]

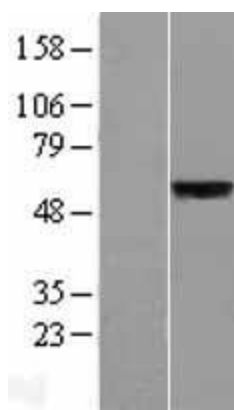
Product images:



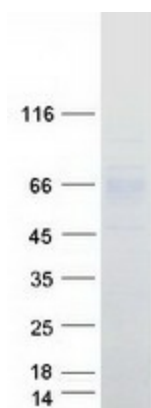
Circular map for RC206665



HEK293T cells were transfected with the pCMV6-ENTRY control (Cat# [PS100001], Left lane) or pCMV6-ENTRY SLC39A5 (Cat# RC206665, Right lane) cDNA for 48 hrs and lysed. Equivalent amounts of cell lysates (5 ug per lane) were separated by SDS-PAGE and immunoblotted with anti-SLC39A5 (Cat# [TA810144])(1:2000). Positive lysates [LY406498] (100ug) and [LC406498] (20ug) can be purchased separately from OriGene.



Western blot validation of overexpression lysate (Cat# [LY406498]) using anti-DDK antibody (Cat# [TA50011-100]). Left: Cell lysates from untransfected HEK293T cells; Right: Cell lysates from HEK293T cells transfected with RC206665 using transfection reagent MegaTran 2.0 (Cat# [TT210002]).



Coomassie blue staining of purified SLC39A5 protein (Cat# [TP306665]). The protein was produced from HEK293T cells transfected with SLC39A5 cDNA clone (Cat# RC206665) using MegaTran 2.0 (Cat# [TT210002]).