

## Product datasheet for **RC206664**

### **MGC34774 (NM\_203308) Human Tagged ORF Clone**

#### Product data:

Product Type: Expression Plasmids  
Product Name: MGC34774 (NM\_203308) Human Tagged ORF Clone  
Tag: Myc-DDK  
Symbol: MGC34774  
Mammalian Cell Selection: Neomycin  
Vector: pCMV6-Entry (PS100001)  
E. coli Selection: Kanamycin (25 ug/mL)  
ORF Nucleotide Sequence: >RC206664 representing NM\_203308  
Red=Cloning site Blue=ORF Green=Tags(s)

TTTTGTAATACGACTCACTATAGGGCGCCGGGAATTCGTCGACTGGATCCGGTACCGAGGAGATCTGCC  
GCC**CGATCGCC**

ATGAACTCAGTCTCTGTAGTCATGATGCTCACATCCAAGCCCCTGCACATCCTAGGAAGATTCACACTA  
AGCCATTACTCTTCACTAATCCATGAAAACTTCGAACAACTCCTAGCAGACATGGCCGTGTGCACCA  
TCAATCATGTATGAAGCACCCAGGACCTACAAGTGGCTGCTGAAGACAGCAGAAAGACAGAACCTGGT  
GCTCAGTGGCCAAGGCCATCTTGTGGGCCACCCGGCAGCCATCTGGCCAAGTGGGCTCTGCTGGGAAGG  
AAACTGGTGGTTCGAGCACCCAGGGCATCAACATTTCTGGCAATTTCTGGAGAAACAAATTAAGTATC  
TGGCCTTCTCTACAAGCAGATGAGCACCAACCTTCCCAAGGCCGCCGCCGCCGCCATTCTGGGCC  
CCAGCGCATCTTTTGGTGGCCTTGACAGAACCAAGTGGGGCCAGGCTGCCCTGGACCACCTTATGGTGT  
TATGGGATCTCACTGCCCTA

**ACGCGT**ACGCGGCCGCTCGAGCAGAACTCATCTCAGAAGAGGATCTGGCAGCAATGATATCCTGGATT  
ACAAGGATGACGACGATAAGGTTTAA

Protein Sequence: >RC206664 representing NM\_203308  
Red=Cloning site Green=Tags(s)

MNSVSVVMMLTSKPLHILGRFITKPLLFNMSMENFELTPSRHGRVHHQSCHEAPRTYKVAEDSRKTEPG  
AQWPRPSCGPPGSHLQVGSAGKETGGRAPRGHQHFQFLEKQIKVSGPLPLQADEHQPFPRPARPAIPGP  
PAHLLVALQNQVGPGPCPPYGVLDLWLTAL

**TRTRPLEQKLISEEDLAANDILDYKDDDDKV**

Chromatograms: [https://cdn.origene.com/chromatograms/mk6328\\_d01.zip](https://cdn.origene.com/chromatograms/mk6328_d01.zip)

Restriction Sites: Sgfl-MluI



[View online »](#)

**Cloning Scheme:**


**ACCN:** NM\_203308

**ORF Size:** 510 bp

**OTI Disclaimer:** The molecular sequence of this clone aligns with the gene accession number as a point of reference only. However, individual transcript sequences of the same gene can differ through naturally occurring variations (e.g. polymorphisms), each with its own valid existence. This clone is substantially in agreement with the reference, but a complete review of all prevailing variants is recommended prior to use. [More info](#)

**OTI Annotation:** This clone was engineered to express the complete ORF with an expression tag. Expression varies depending on the nature of the gene.

**Components:** The ORF clone is ion-exchange column purified and shipped in a 2D barcoded Matrix tube containing 10ug of transfection-ready, dried plasmid DNA (reconstitute with 100 ul of water).

**Reconstitution Method:**

1. Centrifuge at 5,000xg for 5min.
2. Carefully open the tube and add 100ul of sterile water to dissolve the DNA.
3. Close the tube and incubate for 10 minutes at room temperature.
4. Briefly vortex the tube and then do a quick spin (less than 5000xg) to concentrate the liquid at the bottom.
5. Store the suspended plasmid at -20°C. The DNA is stable for at least one year from date of shipping when stored at -20°C.

**RefSeq:** [NM\\_203308.1](#), [NP\\_976053.1](#)

**RefSeq Size:** 1848 bp

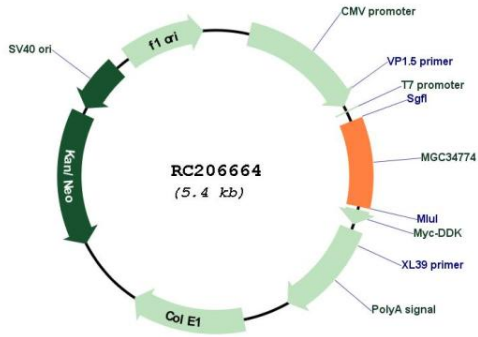
**RefSeq ORF:** 512 bp

**Locus ID:** 399670

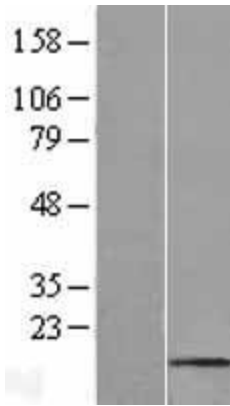
**Cytogenetics:** 7q21.11

**MW:** 19 kDa

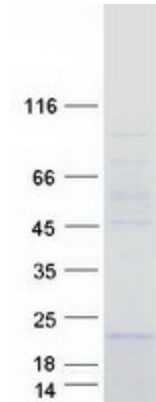
Product images:



Circular map for RC206664



Western blot validation of overexpression lysate (Cat# [LY404390]) using anti-DDK antibody (Cat# [TA50011-100]). Left: Cell lysates from untransfected HEK293T cells; Right: Cell lysates from HEK293T cells transfected with RC206664 using transfection reagent MegaTran 2.0 (Cat# [TT210002]).



Coomassie blue staining of purified MGC34774 protein (Cat# [TP306664]). The protein was produced from HEK293T cells transfected with MGC34774 cDNA clone (Cat# RC206664) using MegaTran 2.0 (Cat# [TT210002]).