

## Product datasheet for **RC206658**

### **C12orf26 (METTL25) (NM\_032230) Human Tagged ORF Clone**

#### **Product data:**

Product Type:	Expression Plasmids
Product Name:	C12orf26 (METTL25) (NM_032230) Human Tagged ORF Clone
Tag:	Myc-DDK
Symbol:	C12orf26
Synonyms:	C12orf26
Mammalian Cell Selection:	Neomycin
Vector:	pCMV6-Entry (PS100001)
E. coli Selection:	Kanamycin (25 ug/mL)



[View online »](#)

**ORF Nucleotide Sequence:**

>RC206658 ORF sequence  
 Red=Cloning site Blue=ORF Green=Tags(s)

TTTTGTAATACGACTCACTATAGGGCGGCCGGAATTCGTCGACTGGATCCGGTACCGAGGAGATCTGCC  
 GCCGCGATCGCC

ATGGCGGCTTCTGCCCTCTCCCGTGACCCCGACTGCCACGCTGCGTGCCAAGTTGCAGGGACTGC  
 TGCAGTTCCTGAGGGATGCCCTGTCCATTTCCAATGCACATACCGTGGATTTCTACACAGAATCCGTGTG  
 GGAGGAGCTGGTCGACTTCCACCGGAGACAGTCTGGCTGCGCTGAGGAAGTCAGCGTCGGAGACGGAG  
 GCCCTGCCCTCAGAGACGCGCCCTAGTGAAGCAGAGTGGGAAGCAGGTATGACTGATTTTCCAAAA  
 TATTTTGTGAACTTCTCAGAAGTTGGTGTGAGTGTGAAGCCTTTGCTCTGGCTGCGAAATACTATTCTGT  
 ACAAACCTTGGGAATATGTACTCCTTTTGAACAGTTGCTGTAGCCCTTCGAGGAAATCAAACCAGAGA  
 ATTGGTAAAAATCAGAAGGCAGTTGAGTTTATGAATATGAAGAAATCTCATGAAGTTCAGGCAATGCAG  
 AGCTGATTAGCAGTATTGCTGACTACTATGGAATAAAGCAGGTGATTGACTTGGGTTCCGGTAAAGGCTA  
 CCTAAGCTCTTTTTGTCCTTGAAGTATGGCTTAAAAGTTTATGGAATTGATTCTCAAATACCAATACT  
 CATGGAGCTGAGGAGAGAAAACAGAAAATGAAGAAACATTGGAAACTCTGTCATGCTCAGTCAAGATTAG  
 ATGTCAATGGACTAGCATTAAAAATGGCAAAAGAAAGGAAAGTAAAAATAAAGTAAAAATAAAGCTGA  
 TACTGAGGAAGTGTAAACAACAGTCTACAAATCAAGAAAAGATGCCTACCTCAGCTATTTTGCCTGAT  
 TTTTCTGGCTCTGTAATTTCTAATATCAGAAAACCAATGGAAACCTTCATTCTCAGCCACATCAAGAAG  
 AAAATTTGTGTTTTGAAAATTCCTTTCTCTTATAAACCTTTTGCCTATTAATGCTGTAGAGCCTACTTC  
 TTCACAGCAAATACCAACAGAGAAACATCTGAAGCCAATAAAGAGAGAAGAAAAATGACATCAAAGTCA  
 AGTGAATCAAATATATATTCACCTTAACTCTTTTATCACTGCTGATTCCAGAACTCCATGACATTATTA  
 AAGATTTGGAGGATTGTTTGTGGTCTCCACACTTGTGGTGTATGGCTCCAAATACTTTGCGAAT  
 ATTTACCTCCAACCTGAAATCAAGGGAGTTGTCAGTGTGGGTTGTTGCTACCACCTCTTATCTGAAGAA  
 TTTGAAAACAGCATAAAGAACGTACTCAGAAAAGTGGGGATTTCCAATGTGCCACTATTTAAAGGAAG  
 AGAGATGGTGTGTTGCGTAATGCCAGAATGTCAGCATGTTTGGCATTGGAGCGGGTTCAGCTGGCCA  
 AGGGCTGCCTACTGAATCACTCTCTATCGTGCTGTTCTTCAGGATATTATAAAGATTGTTATGGCATC  
 ACCAAATGTGATCGGCATGTTGGTAAAATTTATCCAAATGTTCTTTCTTTCTGGATTATGTCAGACGGT  
 CTCTAAAGAAGCTTGGATTAGATGAGTCCAAGCTGCCAGAAAAATTATAATGAACTACTACGAGAAGTA  
 TAAGCCTCGAATGAATGAGCTGGAAGCTTTAATATGTTGAAAGTGTACTGGCTCCCTGTATAGAGACT  
 TTGATTCTCTGGATCGACTTTGTACCTGAAAGAGCAGGAAGATATTGCATGGTCTGCTCTTGTGAAGT  
 TGTTTGATCCCGTAAATCTCCAGATGTTATGCTGTTATTGCCCTGAAGAAGCAGCAG

ACGCGTACGCGGCCGCTCGAGCAGAAACTCATCTCAGAAGAGGATCTGGCAGCAAATGATATCCTGGATT  
 ACAAGGATGACGACGATAAGGTTTAA

**Protein Sequence:**

>RC206658 protein sequence  
 Red=Cloning site Green=Tags(s)

MAASCPLVTPDLPTLRKQLQGLLQFLRDALSISNAHTVDFYTESVWEELVDLPPETVLAALRKSASETE  
 ALPSETRPLVEAEWEAGMTDFPKIFCETSQKLVSEAFALAAKYYSVQNLGICTPFEQLLVALRGNQNR  
 IGENQKAVEFMNMKKSHEVQAMSELSSADYYGIKQVIDLGSKGKYLSSFLSLKYGLKVVYIDSSNTNT  
 HGAEERNRKLKHKWLCHAQSRLDVNLALKMAKERKVKNKVKNKADTEEVFNNSPTNQEKMPTSAILPD  
 FSGSVISNIRNQMETLHSQPHQEENLCFENSFSLINLLPINAPEPTSSQQIPNRETSEANKERRKMTSKS  
 SESNIYSPLTSFITADSELHDIKDLLEDCLMVGLHTCGDLAPNTRLRIFTSNSEIKGVCSVGCYHLLSEE  
 FENQHKERTQEKWGFPMCHYLKEERWCCGRNARMSACLALERVAAGQGLPTESLFRYAVLQDIKDCYGI  
 TKCDRHVKGKIYSKSSFLDYVRRSLKGLDESLEKPEKIMNYEYKPRMNELEAFNMLKVVLPACIET  
 LILLDRLCYLKEQEDIAWSALVKLFDVPKSPRCYAVIALKKQQ

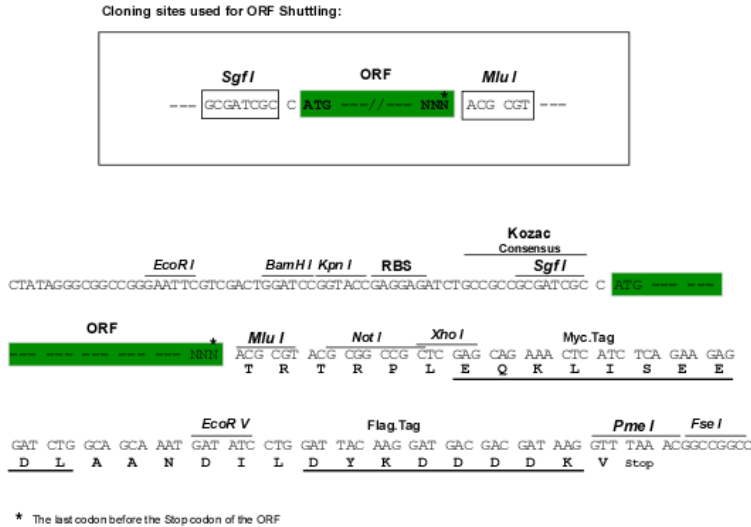
TRTRPLEQKLISEEDLAANDILDYKDDDDKV

**Chromatograms:**

[https://cdn.origene.com/chromatograms/mk6329\\_b02.zip](https://cdn.origene.com/chromatograms/mk6329_b02.zip)

**Restriction Sites:** SgfI-MluI

**Cloning Scheme:**



**ACCN:** NM\_032230

**ORF Size:** 1809 bp

**OTI Disclaimer:** The molecular sequence of this clone aligns with the gene accession number as a point of reference only. However, individual transcript sequences of the same gene can differ through naturally occurring variations (e.g. polymorphisms), each with its own valid existence. This clone is substantially in agreement with the reference, but a complete review of all prevailing variants is recommended prior to use. [More info](#)

**OTI Annotation:** This clone was engineered to express the complete ORF with an expression tag. Expression varies depending on the nature of the gene.

**Components:** The ORF clone is ion-exchange column purified and shipped in a 2D barcoded Matrix tube containing 10ug of transfection-ready, dried plasmid DNA (reconstitute with 100 ul of water).

- Reconstitution Method:**
1. Centrifuge at 5,000xg for 5min.
  2. Carefully open the tube and add 100ul of sterile water to dissolve the DNA.
  3. Close the tube and incubate for 10 minutes at room temperature.
  4. Briefly vortex the tube and then do a quick spin (less than 5000xg) to concentrate the liquid at the bottom.
  5. Store the suspended plasmid at -20°C. The DNA is stable for at least one year from date of shipping when stored at -20°C.

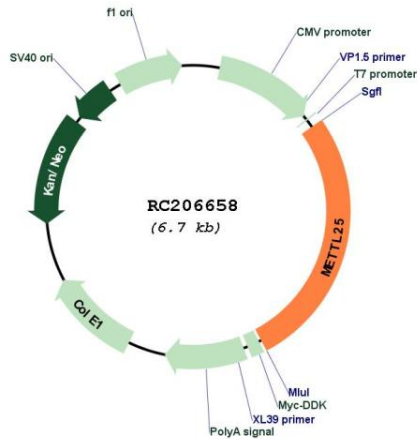
**Note:** Plasmids are not sterile. For experiments where strict sterility is required, filtration with 0.22um filter is required.

**RefSeq:** [NM\\_032230.1](#), [NP\\_115606.1](#)

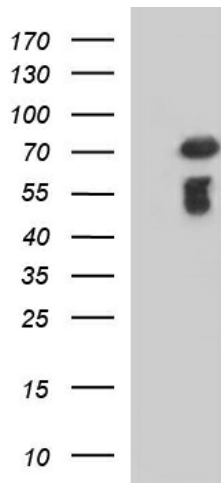
**RefSeq Size:** 2105 bp

**RefSeq ORF:** 1812 bp

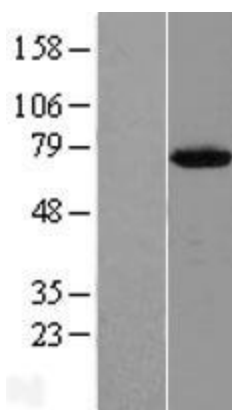
**Locus ID:** 84190  
**UniProt ID:** [Q8N6Q8](#)  
**Cytogenetics:** 12q21.31  
**MW:** 68.2 kDa  
**Gene Summary:** Putative methyltransferase.[UniProtKB/Swiss-Prot Function]

**Product images:**


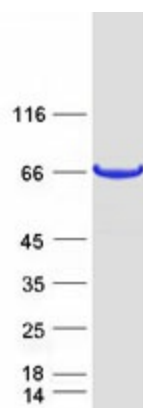
Circular map for RC206658



HEK293T cells were transfected with the pCMV6-ENTRY control (Cat# [PS100001], Left lane) or pCMV6-ENTRY C12orf26 (Cat# RC206658, Right lane) cDNA for 48 hrs and lysed. Equivalent amounts of cell lysates (5 ug per lane) were separated by SDS-PAGE and immunoblotted with anti-C12orf26(Cat# [TA507335]). Positive lysates [LY410257] (100ug) and [LC410257] (20ug) can be purchased separately from OriGene.



Western blot validation of overexpression lysate (Cat# [LY410257]) using anti-DDK antibody (Cat# [TA50011-100]). Left: Cell lysates from untransfected HEK293T cells; Right: Cell lysates from HEK293T cells transfected with RC206658 using transfection reagent MegaTran 2.0 (Cat# [TT210002]).



Coomassie blue staining of purified METTL25 protein (Cat# [TP306658]). The protein was produced from HEK293T cells transfected with METTL25 cDNA clone (Cat# RC206658) using MegaTran 2.0 (Cat# [TT210002]).