

Product datasheet for **RC206657**

TMEM252 (NM_153237) Human Tagged ORF Clone

Product data:

Product Type: Expression Plasmids
Product Name: TMEM252 (NM_153237) Human Tagged ORF Clone
Tag: Myc-DDK
Symbol: TMEM252
Synonyms: C9orf71
Mammalian Cell Selection: Neomycin
Vector: pCMV6-Entry (PS100001)
E. coli Selection: Kanamycin (25 ug/mL)
ORF Nucleotide Sequence: >RC206657 representing NM_153237
Red=Cloning site Blue=ORF Green=Tags(s)

TTTTGTAATACGACTCACTATAGGGCGGCCGGAATTCGTCGACTGGATCCGGTACCGAGGAGATCTGCC
GCC**CGATCGCC**

ATGCAGAACAGAAGCTGGCCTCATTCTGTGCTCTTGCCTCCTGATGGGTTTCCTGATGGTCTGCCTGG
GGGCTTCTTCATTTCTGGGGTCCATATTCGACTGTCAGGGGAGCCTGATTGCGGCCTATTTGCTTCT
GCCTCTGGGGTTGTGATCCTTCTGAGTGAATTTCTGGAGCAACTATCGCCAGGTGACTGAAAGCAA
GGAGTGTGAGGCACATGCTCCGACAACACCTTGCTCATGGGGCCCTGCCGTGGCCACAGTAGACAGGC
CAGACTTTTACCCTCCAGCTTATGAAGAGAGCCTTGAGGTGAAAAGCAGAGCTGCTCCTGCAGAGAGAGA
GGCCTCTGGCATTCTCCACCTATATACAGAGACGGGCCTGGAATCCAGGATGAAAATGACTCCCAC
CCAGAGGCCCCACCATCTTATAGAGAGTCCATAGCCGGCCTGGTGGTACAGCAATCTCAGAGGACGCC
AGAGGCGAGGCCAAGAGTGC

ACGCGTACGCGGCCGCTCGAGCAGAACTCATCTCAGAAGAGGATCTGGCAGCAATGATATCCTGGATT
ACAAGGATGACGACGATAAGGTTTAA

Protein Sequence: >RC206657 representing NM_153237
Red=Cloning site Green=Tags(s)
MQNRTGLILCALALLMGFLMVCLGAFFISWGSIFDCQGSLIAAYLLLPLGFVILLSGIFWSNYRQVTESK
GVLRHMLRQHLAHGALPVATVDRPDFYPPAYEESLEVEKQSCPAEREASGIPPLYTETGLEFQDGNDSH
PEAPPSYRESIAGLVVTAISEDAQRRGQEC

TRTRPLEQKLISEEDLAANDILDYKDDDDKV

Chromatograms: https://cdn.origene.com/chromatograms/ja1449_c09.zip

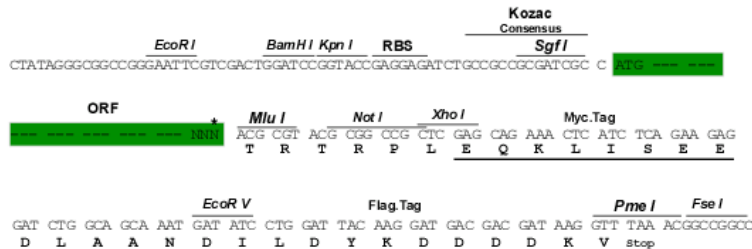


[View online »](#)

Restriction Sites: SgfI-MluI

Cloning Scheme:

Cloning sites used for ORF Shuttling:



* The last codon before the Stop codon of the ORF

ACCN: NM_153237

ORF Size: 510 bp

OTI Disclaimer: The molecular sequence of this clone aligns with the gene accession number as a point of reference only. However, individual transcript sequences of the same gene can differ through naturally occurring variations (e.g. polymorphisms), each with its own valid existence. This clone is substantially in agreement with the reference, but a complete review of all prevailing variants is recommended prior to use. [More info](#)

OTI Annotation: This clone was engineered to express the complete ORF with an expression tag. Expression varies depending on the nature of the gene.

Components: The ORF clone is ion-exchange column purified and shipped in a 2D barcoded Matrix tube containing 10ug of transfection-ready, dried plasmid DNA (reconstitute with 100 ul of water).

Reconstitution Method:

1. Centrifuge at 5,000xg for 5min.
2. Carefully open the tube and add 100ul of sterile water to dissolve the DNA.
3. Close the tube and incubate for 10 minutes at room temperature.
4. Briefly vortex the tube and then do a quick spin (less than 5000xg) to concentrate the liquid at the bottom.
5. Store the suspended plasmid at -20°C. The DNA is stable for at least one year from date of shipping when stored at -20°C.

RefSeq: [NM_153237.2](#)

RefSeq Size: 1284 bp

RefSeq ORF: 513 bp

Locus ID: 169693

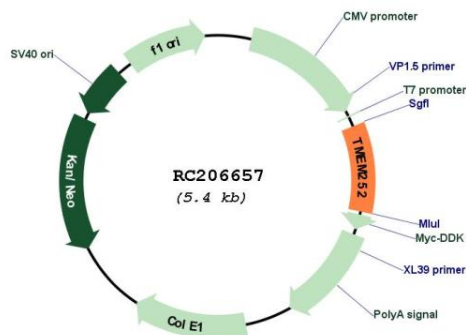
UniProt ID: [Q8N6L7](#)

Cytogenetics: 9q21.11

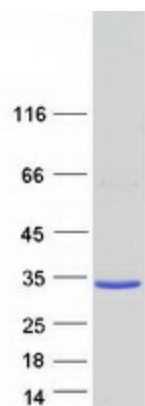
Protein Families: Transmembrane

MW: 18.5 kDa

Product images:



Circular map for RC206657



Coomassie blue staining of purified TMEM252 protein (Cat# [TP306657]). The protein was produced from HEK293T cells transfected with TMEM252 cDNA clone (Cat# RC206657) using MegaTran 2.0 (Cat# [TT210002]).