

Product datasheet for **RC206655**

CLEC14A (NM_175060) Human Tagged ORF Clone

Product data:

Product Type:	Expression Plasmids
Product Name:	CLEC14A (NM_175060) Human Tagged ORF Clone
Tag:	Myc-DDK
Symbol:	CLEC14A
Synonyms:	C14orf27; CEG1; EGFR-5
Mammalian Cell Selection:	Neomycin
Vector:	pCMV6-Entry (PS100001)
E. coli Selection:	Kanamycin (25 ug/mL)



[View online »](#)

ORF Nucleotide Sequence:

>RC206655 ORF sequence
 Red=Cloning site Blue=ORF Green=Tags(s)

TTTTGTAATACGACTCACTATAGGGCGGCCGGAATTCGTCGACTGGATCCGGTACCGAGGAGATCTGCC
 GCC**CGGATCGCC**

ATGAGGCCGGCGTTCGCCCTGTGCCTCCTCTGGCAGGCGCTCTGGCCCGGCCGGCGCGCGAACACC
 CCACTGCCGACCGTGTGCTGCTCGGCCCTCGGGGCTGCTACAGCCTGCCACCAGCTACCATGAAGCG
 GCAGGCGGCCGAGGAGGCTGCATCCTGCGAGGTGGGGCTCAGCACCGTGCCTGCGGGCGCCGAGCTG
 CGCGCTGTGCTCGCGCTCCTGCGGGCAGGCCAGGGCCCGGAGGGGCTCCAAAGACCTGCTGTTCTGGG
 TCGCACTGGAGCGCAGGCGTCCCACTGCACCCTGGAGAACGAGCCTTTGCGGGTCTCTGCTGCTGTC
 CTCGACCCCGCGGTCTCGAAAGCGACACGCTGCAGTGGGTGGAGGAGCCCAACGCTCTGCACCGCG
 CGGAGATGCGCGTACTCCAGGCCACCGTGGGTGAGCCCGCAGGCTGGAAGGAGATGCGATGCCACC
 TGCGGCCAACGGCTACCTGTGCAAGTACCAGTTGAGGTCTTGTGCTGCGCCCGCCCGGGGCGCC
 CTCTAACTTGAGCTATCGCGGCCCTCCAGCTGCACAGCGCCGCTCTGGACTTCAGTCCACCTGGGACC
 GAGGTGAGTGCCTCTGCGGGGACAGCTCCCGATCTCAGTACTTGCATCGCGGACGAAATCGGGCTC
 GCTGGGACAACTCTCGGGCGATGTGTTGTGCCCTGCCCGGGAGGTACCTCCGTGCTGGCAAATGCGC
 AGAGCTCCCTAACTGCCTAGACGACTTGGGAGGCTTTGCTGCGAATGTGCTACGGGCTTCGAGTGGGG
 AAGGACGGCCGCTTGTGTGACCAAGTGGGAAGGACAGCCGACCTTGGGGGACCGGGGTGCCACCA
 GGCGCCCGCCGGCCACTGCAACCAGCCCGTCCCGCAGAGAACATGGCCAATCAGGTCGACGAGAAGCT
 GGGAGAGACCACTTGTCCCTGAACAAGACAATTCAGTAACATCTATTCCTGAGATTCCTCGATGGGGA
 TCACAGAGCAGATGTCTACCCTCAAATGTCCCTCAAGCCGAGTCAAAGGCCACTATCACCCATCAG
 GGAGCGTATTCCAAGTTTAAATCTACGACTTCTGCCACTCCTCAGGCTTTGCACTCTCTCTCTGTC
 CGTGGTCTTCATATTTGTGAGCACAGCAGTAGTAGTGTGGTGATCTTGACCATGACAGTACTGGGCTT
 GTCAAGCTCTGCTTTCACGAAAGCCCTCTCCAGCCAAGGAAGGAGTCTATGGCCCGCCGGGCTGG
 AGAGTGATCCTGAGCCGCTGCTTTGGGCTCCAGTTCTGCACATTGCACAAACAATGGGGTAAAAGTCGG
 GGACTGTGATCTGCGGGACAGAGCAGAGGGTGCCTTGTGGCGGAGTCCCTCTTGGCTCTAGTGATGCA

ACGCGTACGCGGCCGCTCGAGCAGAACTCATCTCAGAAGAGGATCTGGCAGCAAATGATATCTGGATT
 ACAAGGATGACGACGATAAGGTTTAA

Protein Sequence:

>RC206655 protein sequence
 Red=Cloning site Green=Tags(s)

MRPAFALCLLWQALWPGPGGGEHPTADRAGCSASGACYSLHHATMKRQAEEACILRGGALSTVRAGAE
 RAVLALLRAGPGPGGSKDLLFWVALERRRSHCTLENEPLRGFSWLSSDPGGLESIDLQWVEEPQRSCTA
 RRCAVLQATGGVEPAGWKEMRCHLRANGYLCKYQFEVLCAPRPGAASNLRYRPFQLHSAALDFSPPGT
 EVSALCRGQLPISVTICIADEIGARWDLKSGDVLCPGGRYL RAGKCAELPNCLDDLGGFACECATGFELG
 KDGRSCVTSLEGQPTLGGTGVPTRRPPATATSPVQRTWPVIRVDEKLGETPLVPEQDNSVTSIPEIPRWG
 SQSTMSTLQMSLQAESKATITPSGSVISKFNSTSSATPQAFDSSSAVVFIFVSTAVVVLVILMTMTVLGL
 VKLCFHESPSSQPRKESMGPPGLESDPEPAALGSSSAHCTNNGVKVGDCLDRDRAEGALLAESPLGSSDA

TRTRPLEQKLISEEDLAANDILDYKDDDDKV

Chromatograms:

https://cdn.origene.com/chromatograms/mk6520_d02.zip

Restriction Sites:

Sgfl-MluI

Cloning Scheme:


ACCN: NM_175060

ORF Size: 1470 bp

OTI Disclaimer: The molecular sequence of this clone aligns with the gene accession number as a point of reference only. However, individual transcript sequences of the same gene can differ through naturally occurring variations (e.g. polymorphisms), each with its own valid existence. This clone is substantially in agreement with the reference, but a complete review of all prevailing variants is recommended prior to use. [More info](#)

OTI Annotation: This clone was engineered to express the complete ORF with an expression tag. Expression varies depending on the nature of the gene.

Components: The ORF clone is ion-exchange column purified and shipped in a 2D barcoded Matrix tube containing 10ug of transfection-ready, dried plasmid DNA (reconstitute with 100 ul of water).

Reconstitution Method:

1. Centrifuge at 5,000xg for 5min.
2. Carefully open the tube and add 100ul of sterile water to dissolve the DNA.
3. Close the tube and incubate for 10 minutes at room temperature.
4. Briefly vortex the tube and then do a quick spin (less than 5000xg) to concentrate the liquid at the bottom.
5. Store the suspended plasmid at -20°C. The DNA is stable for at least one year from date of shipping when stored at -20°C.

RefSeq: [NM_175060.3](#)

RefSeq Size: 2371 bp

RefSeq ORF: 1473 bp

Locus ID: 161198

UniProt ID: [Q86T13](#)

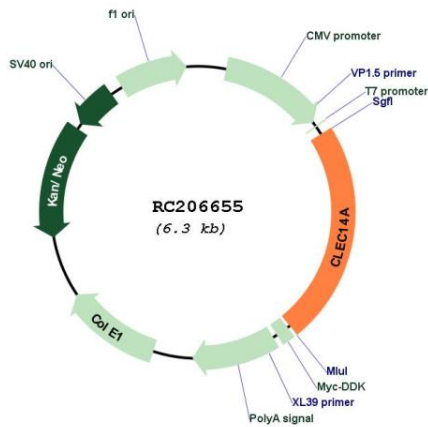
Cytogenetics: 14q21.1

Protein Families: Transmembrane

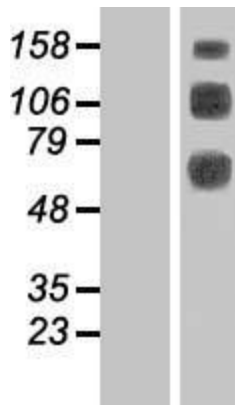
MW: 51.6 kDa

Gene Summary: This gene encodes a member of the C-type lectin/C-type lectin-like domain (CTL/CTLD) superfamily. Members of this family share a common protein fold and have diverse functions, such as cell adhesion, cell-cell signalling, glycoprotein turnover, and roles in inflammation and immune response. This family member plays a role in cell-cell adhesion and angiogenesis. It functions in filopodia formation, cell migration and tube formation. Due to its presence at higher levels in tumor endothelium than in normal tissue endothelium, it is considered to be a candidate for tumor vascular targeting. [provided by RefSeq, Jan 2012]

Product images:



Circular map for RC206655



Western blot validation of overexpression lysate (Cat# [LY406300]) using anti-DDK antibody (Cat# [TA50011-100]). Left: Cell lysates from untransfected HEK293T cells; Right: Cell lysates from HEK293T cells transfected with RC206655 using transfection reagent MegaTran 2.0 (Cat# [TT210002]).