

Product datasheet for **RC206643**

ARH (LDLRAP1) (NM_015627) Human Tagged ORF Clone

Product data:

Product Type:	Expression Plasmids
Product Name:	ARH (LDLRAP1) (NM_015627) Human Tagged ORF Clone
Tag:	Myc-DDK
Symbol:	ARH
Synonyms:	ARH; ARH1; ARH2; FHCB1; FHCB2; FHCL4
Mammalian Cell Selection:	Neomycin
Vector:	pCMV6-Entry (PS100001)
E. coli Selection:	Kanamycin (25 ug/mL)
ORF Nucleotide Sequence:	>RC206643 representing NM_015627 Red=Cloning site Blue=ORF Green=Tags(s)

TTTTGTAATACGACTCACTATAGGGCGGCCGGAATTCGTCGACTGGATCCGGTACCGAGGAGATCTGCC
GCC**CGATCGCC**

ATGGACGCGCTCAAGTCGGCGGGCGGGCGCTGATCCGGAGCCCCAGCTTGGCCAAGCAGAGCTGGGGG
GCGGTGGCCGGCACCGCAAGCTGCCTGAGAACTGGACAGACACGGGAGACGCTGCTGGAGGGGATGCT
GTTGAGCCTCAAGTACCTGGGCATGACGCTAGTGGAGCAGCCCAAGGGTGAAGGAGCTGTCGGCCCGCCG
ATCAAGAGGATCGTGGCTACAGCTAAGGCCAGTGGGAAGAAGCTGCAGAAGGTGACTCTGAAGGTGTCG
CACGGGAATTATCCTGACAGACAACCTACCAACCAGCTCATTGAGAACGTGTCCATATACAGGATCTC
CTATTGCACAGCAGACAAGATGCACGACAAGGTGTTTGCATACATCGCCCAGAGCCAGCACAACCAGAGC
CTCGAGTGCCACGCCTTCTCTGACCAAGCGGAAGATGGCACAGGCTGTTACCTCACCGTAGCCAGG
CCTTCAAAGTCGCCTTTGAGTTTTGGCAGGTGTCCAAGGAAGAGAAAGAGAGGGACAAAGCCAGCCA
AGAGGGAGGGGACGCTCTGGGGCCCGCAAGACTGCACCCCCCTTGAAGAGCTTGGTCGCCACTGGG
AACCTGCTGGACTTAGAGGAGACGGCTAAGGCCCGCTGTCCACGGTCAGCGCCAACACCACCAACATGG
ACGAGGTGCCCGGCCACAAGCCTTGAGTGGCAGCAGTGTGTCTGGGAGCTGGATGATGGCCTGGATGA
AGCGTTTTGAGGCTTGGCCAGTCTCGGACAAACCCTCAGGTCTGGACACTGGCCTGACAGCCCAGGAC
ATGCATTACGCCAGTGCCTCTCGCCTGTCGACTGGGACAAGCCTGACAGCAGCGGCACAGAGCAGGATG
ACCTCTCAGCTTC

ACGCGTACGCGGCCGCTCGAGCAGAAACTCATCTCAGAAGAGGATCTGGCAGCAAATGATATCCTGGATT
ACAAGGATGACGACGATAAGGTTTAA



[View online »](#)

Protein Sequence: >RC206643 representing NM_015627
Red=Cloning site Green=Tags(s)

MDALKSAGRALIRSPSLAKQSWGGRHRKLPENWTDRETLLLEGMLFSLKYLGMTLVEQPKGEELSAAA
 IKRIVATAKASGKKLQKVTLKVSPRGIILTDNLTNQLIENVSIYRISYCTADKMHDKVFAYIAQSQHNQS
 LECHAFLECTKRKMAQAVLTVAQAFKVAFEFWQVSKEEKEKRDKASQEGGDVLGARQDCTPPLKSLVATG
 NLLDLEETAKAPLSTVSANTTNMDEVPRPQALSGSSVVWELDDGLDEAFSRLAQSRTPNPQVLDTGLTAQD
 MHYAQCLSPVDWPKDSSGTEQDDLFSF

TRTRPLEQKLISEEDLAANDILDYKDDDDKV

Chromatograms: https://cdn.origene.com/chromatograms/mg2783_c05.zip

Restriction Sites: SgfI-MluI

Cloning Scheme:



ACCN: NM_015627

ORF Size: 924 bp

OTI Disclaimer: The molecular sequence of this clone aligns with the gene accession number as a point of reference only. However, individual transcript sequences of the same gene can differ through naturally occurring variations (e.g. polymorphisms), each with its own valid existence. This clone is substantially in agreement with the reference, but a complete review of all prevailing variants is recommended prior to use. [More info](#)

OTI Annotation: This clone was engineered to express the complete ORF with an expression tag. Expression varies depending on the nature of the gene.

Components: The ORF clone is ion-exchange column purified and shipped in a 2D barcoded Matrix tube containing 10ug of transfection-ready, dried plasmid DNA (reconstitute with 100 ul of water).

Reconstitution Method:

1. Centrifuge at 5,000xg for 5min.
2. Carefully open the tube and add 100ul of sterile water to dissolve the DNA.
3. Close the tube and incubate for 10 minutes at room temperature.
4. Briefly vortex the tube and then do a quick spin (less than 5000xg) to concentrate the liquid at the bottom.
5. Store the suspended plasmid at -20°C. The DNA is stable for at least one year from date of shipping when stored at -20°C.

RefSeq: [NM_015627.1](#), [NP_056442.1](#)

RefSeq Size: 2862 bp

RefSeq ORF: 927 bp

Locus ID: 26119

UniProt ID: [Q5SW96](#)

Cytogenetics: 1p36.11

Domains: PID

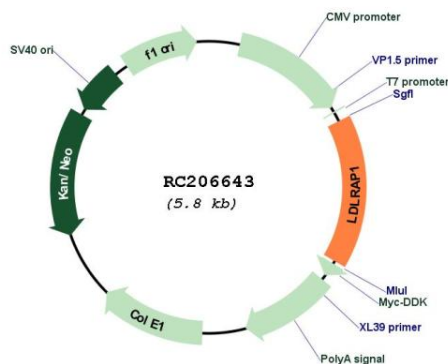
Protein Families: Druggable Genome

Protein Pathways: Endocytosis

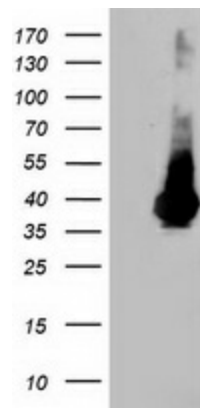
MW: 33.7 kDa

Gene Summary: The protein encoded by this gene is a cytosolic protein which contains a phosphotyrosine binding (PTD) domain. The PTD domain has been found to interact with the cytoplasmic tail of the LDL receptor. Mutations in this gene lead to LDL receptor malfunction and cause the disorder autosomal recessive hypercholesterolaemia. [provided by RefSeq, Jul 2008]

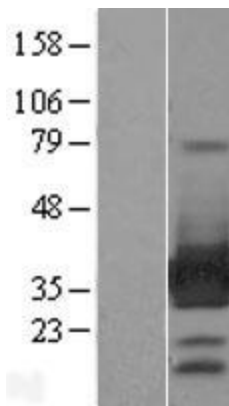
Product images:



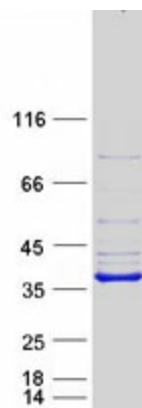
Circular map for RC206643



HEK293T cells were transfected with the pCMV6-ENTRY control (Cat# [PS100001], Left lane) or pCMV6-ENTRY LDLRAP1 (Cat# RC206643, Right lane) cDNA for 48 hrs and lysed. Equivalent amounts of cell lysates (5 ug per lane) were separated by SDS-PAGE and immunoblotted with anti-LDLRAP1 (Cat# [TA503854]). Positive lysates [LY414462] (100ug) and [LC414462] (20ug) can be purchased separately from OriGene.



Western blot validation of overexpression lysate (Cat# [LY414462]) using anti-DDK antibody (Cat# [TA50011-100]). Left: Cell lysates from untransfected HEK293T cells; Right: Cell lysates from HEK293T cells transfected with RC206643 using transfection reagent MegaTran 2.0 (Cat# [TT210002]).



Coomassie blue staining of purified LDLRAP1 protein (Cat# [TP306643]). The protein was produced from HEK293T cells transfected with LDLRAP1 cDNA clone (Cat# RC206643) using MegaTran 2.0 (Cat# [TT210002]).