

## Product datasheet for **RC206639**

### SLC43A2 (NM\_152346) Human Tagged ORF Clone

#### Product data:

Product Type:	Expression Plasmids
Product Name:	SLC43A2 (NM_152346) Human Tagged ORF Clone
Tag:	Myc-DDK
Symbol:	SLC43A2
Synonyms:	LAT4
Mammalian Cell Selection:	Neomycin
Vector:	pCMV6-Entry (PS100001)
E. coli Selection:	Kanamycin (25 ug/mL)



[View online »](#)

**ORF Nucleotide Sequence:**

>RC206639 ORF sequence  
 Red=Cloning site Blue=ORF Green=Tags(s)

TTTTGTAATACGACTCACTATAGGGCGGCCGGGAATTCGTCGACTGGATCCGGTACCGAGGAGATCTGCC  
 GCC**CGGATCGCC**

ATGGCGCCACCCTGGCCACTGCCCATCGGCGCCGCTGGTGGATGGCCTGCACGGCCGTGCTGGAGAACC  
 TCCTTTCTCGGCAGTCCTCCTGGGCTGGGGCTCGCTGCTCATCATGCTCAAGTCAGAGGGCTTTTACTC  
 CTACCTGTGTACCGAGCCAGAGAATGTCACCAATGGCACAGTGGGCGGCACAGCAGAGCCGGGCACGAG  
 GAGGTGAGCTGGATGAACGGCTGGCTCAGCTGCCAGGCCAGGACGAGATGCTAAATTTGGCCTTCACTG  
 TGGGCTCCTTTCTGCTCAGTGCCATCACCTGCCCTGGGTATCGTCATGGACAAGTATGGCCCAGGAA  
 GCTCAGGCTGCTGGCAGCGCTGCTTCGCGGTTTCTGCTTGTGATTGCGTACGGAGCAAGTAAACCA  
 AACGCTCTCTCCGTGCTCATCTTCATCGCCCTGGCTCTGAATGGCTTTGGTGGGATGTGTATGACCTTCA  
 CCTCATTAACTGCCAACATGTTCCGGCAGCTTCGGTCCACGTTTATTGCCTTGATGATTGGGTCTCA  
 CGCTCCTCGGCAGTCACCTTTCCAGGAATCAAGCTCATCTATGATGCTGGTGTCTCCTTCATCGTCGTC  
 CTGCTGGTCTGGGCGCGCTGCTCCGGGCTGGTTTTCTCAACTGCTTCTTAACTGGCCCTTGAGCCCT  
 TCCCGGGGCCGGAGGACATGGACTACTCGGTGAAGATCAAGTTCAGCTGGCTGGGCTTTGACCACAAGAT  
 CACAGGGAAGCAGTTCTACAAGCAGGTGACCACGGTGGGCGGCGCCTGAGTGTGGGCAGCTCCATGAGG  
 AGTGCCAAGGAGCAGGTGGCGCTGCAGGAGGGCCACAAGCTGTGCTGTCCACCGTCGACCTGGAGGTGA  
 AGTGCCAGCCGGATGCCGAGTGGCCCCCTCCTCATGCACAGCGTGTTCAGCCCCATCCTGCTGCTCAG  
 CCTGGTACCATGTGCGTACGCAGCTGCGGCTCATCTTCTACATGGGGCTATGAACAACATCCTCAAG  
 TTCCTGGTCAGCGGCGACCAGAAGACAGTTGGCCTACACCTCCATCTTCGCGCTGCTCCAGCTGCTGT  
 GCCTGTGACGGCCCCCGTCATTGGCTACATCATGGACTGGAGGCTGAAGGAGTGAAGACGCTCCGA  
 GGAGCCCGAGGAGAAAGACGCCAACCAAGGCGAGAAGAAAAAGAAGAAGCGGGACCGGCAGATCCAGAAG  
 ATCACTAATGCCATGCGGGCCTTCGCTTACC AACCTGCTGCTCGTGGGCTTTGGGGTGACCTGCCTCA  
 TTCCAACCTGCCTCTCCAGATCCTCTCCTTTCATCCTGCACACAATCGTGCAGGATTATCCACTCCGC  
 TGTCCGGGGCCTGTACGCTGCCGTGTACCCTCCACCCAGTTCGGCAGCCTCACGGGACTGCAGTCTCTG  
 ATCAGCGCGCTCTTCGCCCTTCTGCAGCAGCCGCTGTTTCTGGCCATGATGGTCTCTCCAGGAGACC  
 CTCTGTGGGTGAACGTGGGGCTGCTCCTTCTCAGCCTGCTGGGCTTCTGCCTCCCGCTCTACCTGATCTG  
 CTACCGGCGCCAGCTGGAGCGGCAGCTGCAGCAGAGGCAGGAGGATGACAACTCTTCTCAAAATCAAC  
 GGCTCGTCCAACCAGGAGCCTTCGTG

**ACGCGT**ACGCGGCGCCTCGAGCAGAACTCATCTCAGAAGAGGATCTGGCAGCAAATGATATCCTGGATT  
 ACAAGGATGACGACGATAAGGTTTAA

**Protein Sequence:**

>RC206639 protein sequence  
 Red=Cloning site Green=Tags(s)

MAPTLATAHRRRWMACTAVLENLLFSVLLGWGSLIIMLKSEGFYSYLCTEPENVTNGTVGGTAEPGHE  
 EVSWMNGWLSQQAQDEMLNLAFTVGSFLLSAITLPLGIVMDKYGPRKLRLLGSACFAVSCLLIAYGASKP  
 NALSVLIFIALALNGFGGCMFTFTSLTLPNMFGLRSTFIALMIGSYASSAVTFPGIKLIYDAGVSFIVV  
 LVVWAGCSGLVFLNCFNWPLEPFGPEDMDYSVKIKFSWLGFDPKIKGQFYKQVTVGRRLSVGSSMR  
 SAKEQVALQEGHKLCLSTVDLEVKQPDAAVAPSFMHVSFPIIIISLVTMCVTQLRLIFYMAMNNILK  
 FLVSGDQKTVGLYTSIFGVLQLLCLLTPVIGYIMDWRLKCEDASEEPEEKDANQGEKKKKRDRQIQK  
 ITNAMRAFAFTNLLL VGFGVTCLIPNLPLQILSFILHTIVRGIHSAVGGLYAAVYPSTQFGLTGLQSL  
 ISALFALLQQPLFLAMMGPLQGDPLWVNVGLLLL SLLGFCLPLYLICRYRQLERQLQQRQEDDKLFLKIN  
 GSSNQAEFV

**TR**TRPLEQKLISEEDLAANDILDYKDDDDKV

**Chromatograms:**

[https://cdn.origene.com/chromatograms/mk6286\\_d05.zip](https://cdn.origene.com/chromatograms/mk6286_d05.zip)

**Restriction Sites:**

Sgfl-Mlul

Cloning Scheme:



ACCN: NM\_152346

ORF Size: 1707 bp

OTI Disclaimer: Due to the inherent nature of this plasmid, standard methods to replicate additional amounts of DNA in E. coli are highly likely to result in mutations and/or rearrangements. Therefore, OriGene does not guarantee the capability to replicate this plasmid DNA. Additional amounts of DNA can be purchased from OriGene with batch-specific, full-sequence verification at a reduced cost. Please contact our customer care team at [custsupport@origene.com](mailto:custsupport@origene.com) or by calling 301.340.3188 option 3 for pricing and delivery.

The molecular sequence of this clone aligns with the gene accession number as a point of reference only. However, individual transcript sequences of the same gene can differ through naturally occurring variations (e.g. polymorphisms), each with its own valid existence. This clone is substantially in agreement with the reference, but a complete review of all prevailing variants is recommended prior to use. [More info](#)

OTI Annotation: This clone was engineered to express the complete ORF with an expression tag. Expression varies depending on the nature of the gene.

Components: The ORF clone is ion-exchange column purified and shipped in a 2D barcoded Matrix tube containing 10ug of transfection-ready, dried plasmid DNA (reconstitute with 100 ul of water).

- Reconstitution Method:
1. Centrifuge at 5,000xg for 5min.
  2. Carefully open the tube and add 100ul of sterile water to dissolve the DNA.
  3. Close the tube and incubate for 10 minutes at room temperature.
  4. Briefly vortex the tube and then do a quick spin (less than 5000xg) to concentrate the liquid at the bottom.
  5. Store the suspended plasmid at -20°C. The DNA is stable for at least one year from date of shipping when stored at -20°C.

RefSeq: [NM\\_152346.3](#)

RefSeq Size: 8217 bp

RefSeq ORF: 1710 bp

Locus ID: 124935

UniProt ID: [Q8N370](#)

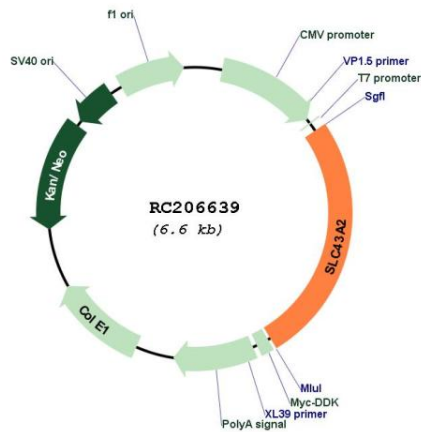
Cytogenetics: 17p13.3

Protein Families: Transmembrane

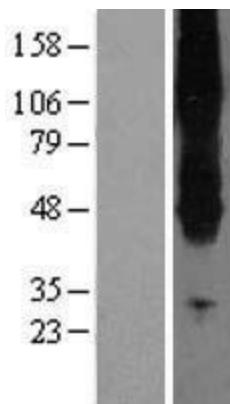
MW: 62.7 kDa

**Gene Summary:** This gene encodes a member of the L-amino acid transporter-3 or SLC43 family of transporters. The encoded protein mediates sodium-, chloride-, and pH-independent transport of L-isomers of neutral amino acids, including leucine, phenylalanine, valine and methionine. This protein may contribute to the transfer of amino acids across the placental membrane to the fetus. [provided by RefSeq, Mar 2016]

### Product images:



Circular map for RC206639



Western blot validation of overexpression lysate (Cat# [LY407596]) using anti-DDK antibody (Cat# [TA50011-100]). Left: Cell lysates from untransfected HEK293T cells; Right: Cell lysates from HEK293T cells transfected with RC206639 using transfection reagent MegaTran 2.0 (Cat# [TT210002]).