

Product datasheet for **RC206632**

RABIF (NM_002871) Human Tagged ORF Clone

Product data:

Product Type: Expression Plasmids
Product Name: RABIF (NM_002871) Human Tagged ORF Clone
Tag: Myc-DDK
Symbol: RABIF
Synonyms: MSS4; RASGFR3; RASGRF3
Mammalian Cell Selection: Neomycin
Vector: pCMV6-Entry (PS100001)
E. coli Selection: Kanamycin (25 ug/mL)
ORF Nucleotide Sequence: >RC206632 ORF sequence
Red=Cloning site Blue=ORF Green=Tags(s)

TTTTGTAATACGACTCACTATAGGGCGGCCGGAATTCGTCGACTGGATCCGGTACCGAGGAGATCTGCC
GCC**CGATCGCC**

ATGGAACCGGGAGCAGCCGAGCGAGTTAGTGT**CAGCC**AGGGCCGAAACCGGAAGCGGTGCTGTGCC
AGCGTTGCGGCTCCCGGTGCTGCAGCCAGGGACCGCTCTCTTCTCGCCGACAGCTTTTCCTCCCTC
CATGAGAAAGAAGCCAGCTCTGTCTGACGGCAGCAATCCTGACGGCGATCTCTCCAGGAACACTGGCTG
GTTGAGGACATGTTCAATTTT**GAGAAT**GTGGGCTT**CACCAAGG**ACGTGGGCAACATCAAGTTTCTGGTCT
GCGCAGACTGTGAAATTGGACCAATTGGCTGGCATTGCCTAGATGACAAGAACAGTTTCTATGTGGCCTT
GGAACGAGTTTCCATGAG

ACGCGTACGCGGCCGCTCGAGCAGAACTCATCTCAGAAAGAGGATCTGGCAGCAAATGATATCCTGGATT
ACAAGGATGACGACGATAAGGTTTAA

Protein Sequence: >RC206632 protein sequence
Red=Cloning site Green=Tags(s)

MEPAEQPSELVSAEGRNRKAVLCQRCGSRVLQPGTALF**SRRQL**FLPSMRKKPALSDGSNPDGDLQEHWL
VEDMFIFENVGFTKDVGNIKFLVCADCEIGPIGWHLDDKNSFYVALERSHE

TRTRPLEQ**KL**ISEEDLAANDILDYKDDDDKV

Chromatograms: https://cdn.origene.com/chromatograms/mk6329_h12.zip

Restriction Sites: Sgfl-MluI

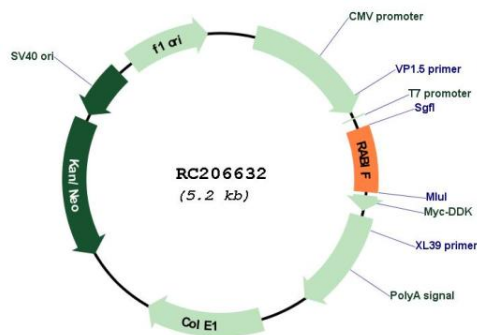


[View online »](#)

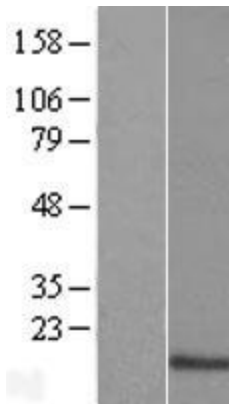
Cytogenetics: 1q32.1
Domains: Mss4
MW: 13.8 kDa

Gene Summary: This gene encodes a member of the SCE4/YPT1/RAB family of small GTP-binding proteins that are involved in the regulation of intracellular vesicular transport. This protein stimulates GTP-GDP exchange in SEC4, and to a lesser extent in YPT1 and RAB3A, and may play a general role in vesicular transport. [provided by RefSeq, Oct 2011]

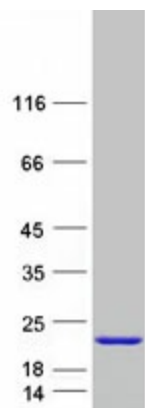
Product images:



Circular map for RC206632



Western blot validation of overexpression lysate (Cat# [LY419050]) using anti-DDK antibody (Cat# [TA50011-100]). Left: Cell lysates from untransfected HEK293T cells; Right: Cell lysates from HEK293T cells transfected with RC206632 using transfection reagent MegaTran 2.0 (Cat# [TT210002]).



Coomassie blue staining of purified RABIF protein (Cat# [TP306632]). The protein was produced from HEK293T cells transfected with RABIF cDNA clone (Cat# RC206632) using MegaTran 2.0 (Cat# [TT210002]).