

Product datasheet for **RC206622**

alpha 1 Fetoprotein (AFP) (NM_001134) Human Tagged ORF Clone

Product data:

Product Type:	Expression Plasmids
Product Name:	alpha 1 Fetoprotein (AFP) (NM_001134) Human Tagged ORF Clone
Tag:	Myc-DDK
Symbol:	AFP
Synonyms:	AFPD; FETA; HPAFP
Vector:	pCMV6-Entry (PS100001)
E. coli Selection:	Kanamycin (25 ug/mL)
Cell Selection:	Neomycin



[View online »](#)

ORF Nucleotide Sequence:

```
>RC206622 ORF sequence
Red=Cloning site Blue=ORF Green=Tags(s)

TTTTGTAATACGACTCACTATAGGGCGGCCGGGAATTCGTGCGACTGGATCCGGTACCGAGGAGATCTGCC
GCCGCGATCGCC

ATGAAGTGGGTGGAATCAATTTTTTTAATTTTCTACTAAATTTTACTGAATCCAGAACACTGCATAGAA
ATGAATATGGAATAGCTTCCATATTGGATTCTTACCAATGTAAGTACTGCAGAGATAAGTTTAGCTGACCTGGC
TACCATATTTTTTCCCAGTTTGTTCAGAAGCCACTTACAAGGAAGTAAGCAAAATGGTAAAAGATGCA
TTGACTGCAATTGAGAAACCCACTGGAGATGAACAGTCTTCAGGGTGTAGAAAACCAGCTACCTGCCT
TTCTGGAAGAAGTTGCCATGAGAAAGAAATTTGGAGAAGTACGGACATTCAGACTGCTGCAGCCAAAG
TGAAGAGGAAGACATAACTGTTTTCTGCACACAAAAGCCACTCCAGCATCGATCCCCTTTTCCAA
GTTCCAGAACCTGTCACAAGCTGTGAAGCATATGAAGAAGACAGGGAGACATTCATGAACAAATTCATT
ATGAGATAGCAAGAAGGCATCCCTTCTGTATGCACCTACAATCTTCTTTGGGCTGCTCGCTATGACAA
AATAATCCATCTTGCTCAAAGCTGAAAATGCAGTTGAATGCTTCCAAACAAAGGCAGCAACAGTTACA
AAAGAATTAAGAGAAAGCAGCTTGTAAATCAACATGCATGTGCAGTAATGAAAAATTTTGGGACCCGAA
CTTTCAAAGCCATAACTGTTACTAACTGAGTCAGAAGTTTACCAAAGTTAATTTTACTGAAATCCAGAA
ACTAGTCTGGATGTGGCCCATGTACATGAGCACTGTTGCAGAGGAGATGTGCTGGATTGTCTGCAGGAT
GGGAAAAAATCATGTCTACATATGTTCTCAACAAGCACTCTGTCAAACAAAATAACAGAATGCTGCA
AACTGACCACGCTGGAACGTGGTCAATGTATAATTCATGCAGAAAATGATGAAAAACCTGAAGGTCTATC
TCCAAATCTAACAGGTTTTTAGGAGATAGAGATTTTAAACCAATTTTCTCAGGGGAAAAAATATCTTC
TTGGCAAGTTTTGTTTCAATGTAATTTCAAGAAGACATCCTCAGTTGCTGTCTCAGTAATTTAAGAGTTG
CTAAAGGATACCAGGAGTTATTGGAGAAGTGTTCAGACTGAAAACCCCTTGAATGCCAAGATAAAGG
AGAAGAAGAAATTACAGAAATACATCCAGGAGAGCCAAAGCATTGGCAAAGGGAAGCTGCGGCCTCTCCAG
AACTAGGAGAATATTACTTACAAAATGCGTTTCTCGTTGCTTACACAAAAGAAAGCCCCCAGCTGACCT
CGTCGGAGCTGATGGCCATCACCAGAAAATGGCAGCCACAGCAGCCACTTGTGCAACTCAGTGAGGA
CAAATATTGGCCTGTGGCGAGGGAGCGGCTGACATTATTATCGGACACTTATGTATCAGACATGAAATG
ACTCCAGTAAACCCTGGTGTGGCCAGTGTGCACTTCTTCATATGCCAACAGGAGGCCATGCTTCAGCA
GCTTGGTGGTGGATGAAACATATGTCCCTCCTGCATTCTCTGATGACAAGTTCATTTTCCATAAGGATCT
GTGCCAAGCTCAGGTGTAGCGCTGCAAACGATGAAGCAAGATTTCTCATTAACTTGTGAAGCAAAG
CCAAAAAACAGAGGAACAACCTGAGGCTGTCATTGCAGATTTCTCAGGCCTGTTGGAGAAATGCTGCC
AAGGCCAGGAACAGGAAGTCTGCTTTGCTGAAGAGGGACAAAACCTGATTTCAAAAACCTGCTGCTTT
GGAGTT

ACGCGTACGCGGCCGCTCGAGCAGAACTCATCTCAGAAGAGGATCTGGCAGCAATGATATCCTGGATT
ACAAGGATGACGACGATAAGGTTTAA
```

Protein Sequence:

```
>RC206622 protein sequence
Red=Cloning site Green=Tags(s)

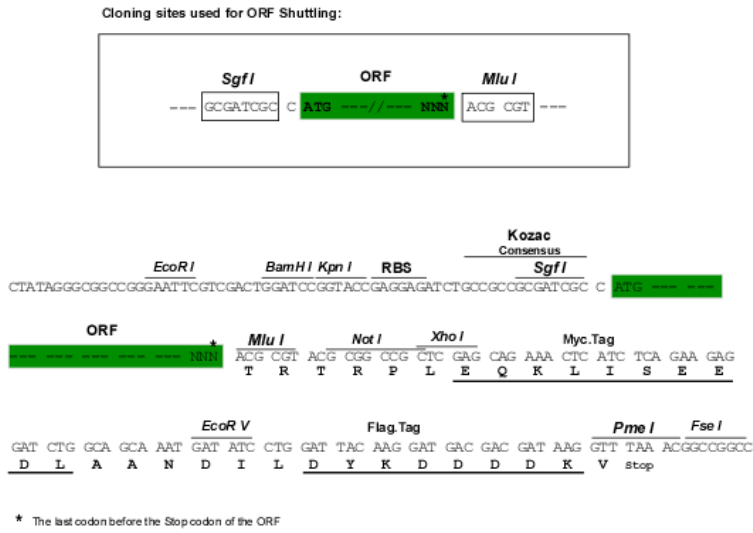
MKWVESIFLIFLLNFESRTLHRNEYGIASILDSYQCTAEISLADLATIFFAQFVQEATYKEVSKMKVDA
LTAIEKPTGDEQSSGLENQLPAFLEELCHEKEILEKYGHSDCCSQSEEGRHNCFLAHKPTPASIPLFQ
VPEPVTSCEAYEEDRETFMNFYIYIARRHPFLYAPTILLWAARYDKIIPSCCKAENAVECFQTKAATVT
KELRESSLLNQHACAVMKNFGTRTFQAITVTKLSQKFTKVNFTIQLKLVLDVAHVHEHCCRGDVLDCQD
GEKIMSYICSQDQLSNKITECKLTTLARGQCIHAENDEKPEGLSPNLNRFLGDRDFNQFSSGEKNIF
LASFVHEYSRRHPQLAVSVILRVAKGYQELLEKCFQTEPLECQDKGEEELQKYIQESQALAKRSCGLFQ
KLGEYYLQNAFLVAYTKKAPQLTSELMAITRMAATAATCCQLSEDKLLACGEGAADIIGHLCIRHEM
TPVNPVGQCCTSSYANRRPCFSSLVVDETYVPPAFSDDKFIHFKDLCAQGVALQTMKQEFLLNLVKQK
PQITEEQL EAVIADF SGLLEKCCQGEQEVCF AEEGQKLISKTRALGV

TRTRPLEQKLI SEEDLAANDILDYKDDDDKV
```

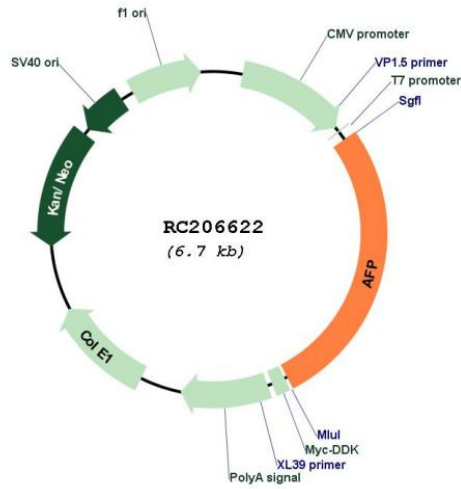
Chromatograms: https://cdn.origene.com/chromatograms/mk6197_c04.zip

Restriction Sites: SgfI-MluI

Cloning Scheme:



Plasmid Map:

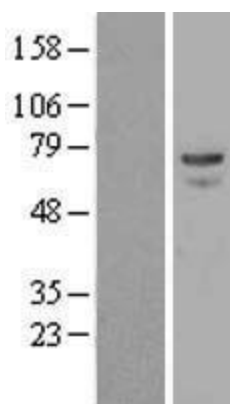


ACCN: NM_001134

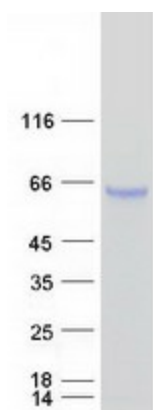
ORF Size: 1827 bp

OTI Disclaimer:	The molecular sequence of this clone aligns with the gene accession number as a point of reference only. However, individual transcript sequences of the same gene can differ through naturally occurring variations (e.g. polymorphisms), each with its own valid existence. This clone is substantially in agreement with the reference, but a complete review of all prevailing variants is recommended prior to use. More info
OTI Annotation:	This clone was engineered to express the complete ORF with an expression tag. Expression varies depending on the nature of the gene.
RefSeq:	NM_001134.2
RefSeq Size:	2057 bp
RefSeq ORF:	1830 bp
Locus ID:	174
Protein Families:	Druggable Genome, Secreted Protein
MW:	68.7 kDa
Gene Summary:	This gene encodes alpha-fetoprotein, a major plasma protein produced by the yolk sac and the liver during fetal life. Alpha-fetoprotein expression in adults is often associated with hepatocarcinoma and with teratoma, and has prognostic value for managing advanced gastric cancer. However, hereditary persistence of alpha-fetoprotein may also be found in individuals with no obvious pathology. The protein is thought to be the fetal counterpart of serum albumin, and the alpha-fetoprotein and albumin genes are present in tandem in the same transcriptional orientation on chromosome 4. Alpha-fetoprotein is found in monomeric as well as dimeric and trimeric forms, and binds copper, nickel, fatty acids and bilirubin. The level of alpha-fetoprotein in amniotic fluid is used to measure renal loss of protein to screen for spina bifida and anencephaly. [provided by RefSeq, Oct 2019]

Product images:



Western blot validation of overexpression lysate (Cat# [LY400455]) using anti-DDK antibody (Cat# [TA50011-100]). Left: Cell lysates from untransfected HEK293T cells; Right: Cell lysates from HEK293T cells transfected with RC206622 using transfection reagent MegaTran 2.0 (Cat# [TT210002]).



Coomassie blue staining of purified AFP protein (Cat# [TP306622]). The protein was produced from HEK293T cells transfected with AFP cDNA clone (Cat# RC206622) using MegaTran 2.0 (Cat# [TT210002]).