

Product datasheet for **RC206620**

Amphiphysin (AMPH) (NM_001635) Human Tagged ORF Clone

Product data:

Product Type:	Expression Plasmids
Product Name:	Amphiphysin (AMPH) (NM_001635) Human Tagged ORF Clone
Tag:	Myc-DDK
Symbol:	Amphiphysin
Synonyms:	AMPH1
Mammalian Cell Selection:	Neomycin
Vector:	pCMV6-Entry (PS100001)
E. coli Selection:	Kanamycin (25 ug/mL)



[View online »](#)

**ORF Nucleotide
Sequence:**

>RC206620 ORF sequence
 Red=Cloning site Blue=ORF Green=Tags(s)

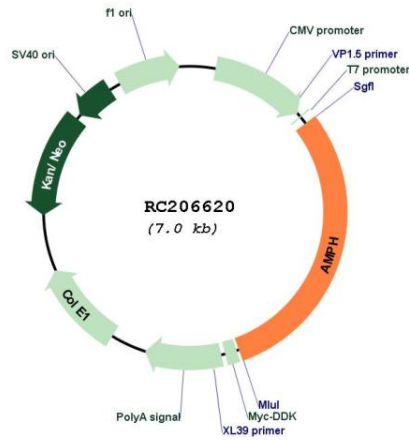
TTTTGTAATACGACTCACTATAGGGCGGCCGGAATTCGTCGACTGGATCCGGTACCGAGGAGATCTGCC
 GCC**CGGATCGCC**

ATGGCCGACATCAAGACGGGCATCTTCGCCAAGAACGTCCAGAAGCGACTCAACCGCGCAGGAAAAGG
 TCCTCCAAAAGCTGGGGAAAGCTGATGAGACAAAAGACGAACAGTTTCAAGAATATGTCCAGAATTCAA
 ACGGCAAGAAGCAGAGGGTACCAGACTTACGCGAGAACTCCGAGGATATTTAGCAGCAATCAAAGGCATG
 CAGGAGGCCTCCATGAAGCTCACAGAGTCGCTGCATGAAGTCTATGAGCCTGACTGGTATGGGCGGGAAG
 ATGTGAAAATGGTTGGTGAAGAAATGTGATGTGCTGTGGGAAGACTTCCATCAAAAACCTCGTGGATGGGTC
 CTTGCTAACACTGGATACCTACCTGGGGCAATTTCTGACATAAAGAATCGCATCGCCAAGCGCAGCAGG
 AAGCTAGTGGACTATGACAGTGCCCGCCACCCTCTGGAAGCTCTGCAGAGCTCCAAGAGGAAGGATGAGA
 GTCGAATCTTAAGGCAGAAGAAGAATTCAGAAAAGCACAGAAAGTGTGTTGAAGAGTTTAACTGTTGACTT
 ACAAGAAGAGTTACCATCATTATGGTCAAGACGAGTTGGATTTTATGTTAATACTTTCAAAAACGTCTCC
 AGCCTTGAAGCCAAGTTTCATAAGGAAATTCGCGTGCTTTGCCACAAAACCTGTATGAAGTGTGACAAAAC
 TGGGTGACCAGCACGCCGACAAGGCCTTACCATCCAAGGAGCGCCAGTGATTCCGGTCTCTCCGCAT
 TGCAAAGACACCATCACCGCCTGAGGAGCCTTACCCCTCCCGAGCCCGACAGCAAGTCCAAATCATACA
 TTAGCACCTGCGTCTCCCGCACCAGCACGGCCTCGGTACCTTACAGACAAGGAAAGGGCCTCCTGTCC
 CACCTCTACCTAAAGTCAACCCGACAAGGAAGTGCAGCAGGAGAATCATCAGTTTCTTTGAGGACAA
 CTTTGTTCAGAAATCAGTGTGACAACACCTTCCAGAAATGAAGTCCCTGAGGTGAAGAAAGAGGAGACT
 TTGCTGGATCTGGACTTTGATCCTTTCAAGCCCGAGGTGACACCTGCAGGTTCTGCTGGAGTGACCCACT
 CACCCATGCTCAGACATTGCCCTGGGACCTATGGACGACAAGCACTGATTTGGTACAGCCGGCTTCTGG
 TGGTTCAATTAATGGATTACACAGCCCCAGGATACTTCAATTATTCACAATGCAGACAGACCAGAGTATG
 ATCTGCAACTTGCTGAATCTGAACAGGCTCCACCCACAGAGCCAAAAGCAGAGGAGCCTCTGGCTGCTG
 TCACACCTGCCGTTGGTCTGGACCTTGGAAATGGACACTCGGGCTGAGGAGCCAGTGGAGGAGGCAGTGAT
 CATACCTGGAGCTGATGCTGATGCAGCTGTTGGAACCTTGGTGTGACGAGCTGAGGGGGCCCCAGGAGAG
 GAAGCAGAGGGGAGACGGCCACTGTCCCTGCCGGGAAGGAGTAAGTTTAGAGGAGGCCAAAATTGGAA
 CTGAAACCACTGAGGGTGCAGAGAGTGCCCAACCTGAAGCAGAGGAGCTCGAAGCAACAGTGCCTCAGGA
 GAAGGTCAATTCCTTCGGTGGTCAATAGAGCCTGCCTCAACCATGAAGAGGAAGGAGAAAACGAAATAACT
 ATAGGTGCAGAGCCCAAGGAGACCACGAGGACCGGCTCCTCCGGGCCACCACGAGACACCGGAGC
 TGGCTACGGAGCAGAAGCCTATCCAGGACCTCAGCCACGCCTTCTGCACCAGCCATGGGGGCTGCTGA
 CCAGCTAGCATCTGCAAGGGAGGCTCTCAGGAATTGCCTCCTGGCTTTCTTACAAGGTGGAAACTG
 CATGATTTTGGAGCAGCAAAATCTGATGAACCTTACCTTACAAAGGGGTGATGTGGTGTGGTGGTCCCCT
 CAGATTGAGAAGCTGATCAGGATGCAGGCTGGCTGGTGGGAGTGAAGGAATCAGACTGGCTTCACTACAG
 AGACCTTGCCACCTACAAAGGCCTTTTCCAGAGAACTTACCCGACGCTTAGAT

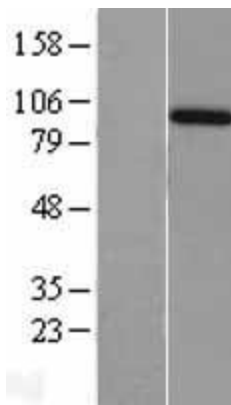
ACGCGTACGCGGGCCGCTCGAGCAGAAACTCATCTCAGAAGAGGATCTGGCAGCAATGATATCCTGGATT
 ACAAGGATGACGACGATAAGGTTTAA

Components:	The ORF clone is ion-exchange column purified and shipped in a 2D barcoded Matrix tube containing 10ug of transfection-ready, dried plasmid DNA (reconstitute with 100 ul of water).
Reconstitution Method:	<ol style="list-style-type: none">1. Centrifuge at 5,000xg for 5min.2. Carefully open the tube and add 100ul of sterile water to dissolve the DNA.3. Close the tube and incubate for 10 minutes at room temperature.4. Briefly vortex the tube and then do a quick spin (less than 5000xg) to concentrate the liquid at the bottom.5. Store the suspended plasmid at -20°C. The DNA is stable for at least one year from date of shipping when stored at -20°C.
RefSeq:	NM_001635.4
RefSeq Size:	3426 bp
RefSeq ORF:	2088 bp
Locus ID:	273
UniProt ID:	P49418
Cytogenetics:	7p14.1
Domains:	SH3, BAR, BAR
Protein Families:	Secreted Protein
Protein Pathways:	Fc gamma R-mediated phagocytosis
MW:	76.2 kDa
Gene Summary:	This gene encodes a protein associated with the cytoplasmic surface of synaptic vesicles. A subset of patients with stiff-man syndrome who were also affected by breast cancer are positive for autoantibodies against this protein. Alternate splicing of this gene results in two transcript variants encoding different isoforms. Additional splice variants have been described, but their full length sequences have not been determined. A pseudogene of this gene is found on chromosome 11.[provided by RefSeq, Nov 2010]

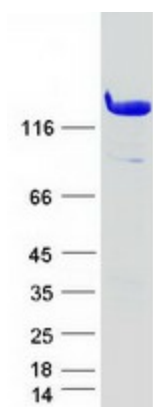
Product images:



Circular map for RC206620



Western blot validation of overexpression lysate (Cat# [LY400614]) using anti-DDK antibody (Cat# [TA50011-100]). Left: Cell lysates from untransfected HEK293T cells; Right: Cell lysates from HEK293T cells transfected with RC206620 using transfection reagent MegaTran 2.0 (Cat# [TT210002]).



Coomassie blue staining of purified AMPH protein (Cat# [TP306620]). The protein was produced from HEK293T cells transfected with AMPH cDNA clone (Cat# RC206620) using MegaTran 2.0 (Cat# [TT210002]).