

Product datasheet for RC206617

MPPED2 (NM_001584) Human Tagged ORF Clone

Product data:

| | |
|---------------------------|---|
| Product Type: | Expression Plasmids |
| Product Name: | MPPED2 (NM_001584) Human Tagged ORF Clone |
| Tag: | Myc-DDK |
| Symbol: | MPPED2 |
| Synonyms: | 239FB; C11orf8 |
| Mammalian Cell Selection: | Neomycin |
| Vector: | pCMV6-Entry (PS100001) |
| E. coli Selection: | Kanamycin (25 ug/mL) |
| ORF Nucleotide Sequence: | >RC206617 ORF sequence Red=Cloning site Blue=ORF Green=Tags(s) |

TTTTGTAATACGACTCACTATAGGGCGGCCGGAATTCGTCGACTGGATCCGGTACCGAGGAGATCTGCC
GCC**CGGATCGCC**

ATGGCACATGGGATTCCTTCTCAAGGCAAAGTTACCATAACGGTGGATGAGTACAGCTCAAACCCACCC
AGGCATTCACGCACTACAACATCAACCAGAGCAGATTCAGCCTCCACATGTACATATGGTCGACCCCAT
CCCATATGACACTCCAAAACCAGCGGGCCACACGGTGTCTGCATCTCAGACACACTCCAGAACA
GATGGTATCCAGATGCCTTATGGGGACATCCTTCTCCACACAGGCGATTCACCGAGCTGGGACTGCCCT
CAGAGGTTAAGAAGTTAATGACTGGTTAGGAACTGCCATATGAATATAAAATAGTGATTGCTGGGAA
TCATGAACTGACATTTGATAAGGAATTCATGGCAGACCTTGTTAAACAGGACTACTACCGTTCCCTCT
GTGTCCAAATTGAAACCAGAGGACTTTGACAATGTTTCAGTCCCTCCTGACAAACAGTATTTACTTACAAG
ATTCGGAGGTAACAGTGAAGGGATTCAGGATATACGGTGCACCTTGACCCCGTGGTTAATGGATGGGG
CTTTAACCTACCCAGAGGTCAGTCTCTGCTGGACAAGTGGAACTCATCCCTGAGGGCATTGACATACTC
ATGACACATGGACCTCCTCTAGGTTTTCGAGACTGGGTTCCAAAGGAGCTTCAAAGAGTGGGCTGTGTGG
AGCTGTTAAACACGGTTCAGAGGCGAGTCCGGCCCAAGCTCCATGTGTTGGTGGAAATCCATGAAGGTTA
TGGCATCATGACCGAGGTTACACAACGTACATCAATGCCTCGACGTGTACAGTCAGCTTTCAACCGACC
AACCTCCAATTATTTGACCTTCCAAACCCACAGGGTTCC

ACGCGTACGCGGCCGCTCGAGCAGAAACTCATCTCAGAAGAGGATCTGGCAGCAAATGATATCCTGGATT
ACAAGGATGACGACGATAAGGTTTAA



[View online »](#)

Protein Sequence: >RC206617 protein sequence
Red=Cloning site Green=Tags(s)

MAHGIPSQGKVTITVDEYSSNPTQAFTHYNINQSRFQPPHVMVDPIPYDTPKPAGHTRFVCISDTHSRT
 DGIQMPYGDILLHTGDFTELGLPSEVKKFNDWLGNLPEYKIVIAGNHELTFDKEFMADLVKQDYRFPS
 VSKLKPEDFDNVQSLLTNSIYLQDSEVTVKGFRIYGAPWTPWFNGWGFNLPRGQSLLDKWNLIPEGIDIL
 MTHGPPLGFRDWVPKELQRVGCVELLNTVQRRVRPKLHVFGGIHEGYGIMTDGYTTYINASTCTVSFQPT
 NPPIIFDLPNPQGS

TRTRPLEQKLISEEDLAANDILDYKDDDDKV

Chromatograms: https://cdn.origene.com/chromatograms/mk6329_g10.zip

Restriction Sites: SgfI-MluI

Cloning Scheme:



ACCN: NM_001584

ORF Size: 882 bp

OTI Disclaimer: The molecular sequence of this clone aligns with the gene accession number as a point of reference only. However, individual transcript sequences of the same gene can differ through naturally occurring variations (e.g. polymorphisms), each with its own valid existence. This clone is substantially in agreement with the reference, but a complete review of all prevailing variants is recommended prior to use. [More info](#)

OTI Annotation: This clone was engineered to express the complete ORF with an expression tag. Expression varies depending on the nature of the gene.

Components: The ORF clone is ion-exchange column purified and shipped in a 2D barcoded Matrix tube containing 10ug of transfection-ready, dried plasmid DNA (reconstitute with 100 ul of water).

Reconstitution Method:

1. Centrifuge at 5,000xg for 5min.
2. Carefully open the tube and add 100ul of sterile water to dissolve the DNA.
3. Close the tube and incubate for 10 minutes at room temperature.
4. Briefly vortex the tube and then do a quick spin (less than 5000xg) to concentrate the liquid at the bottom.
5. Store the suspended plasmid at -20°C. The DNA is stable for at least one year from date of shipping when stored at -20°C.

RefSeq: [NM_001584.3](#)

RefSeq Size: 2404 bp

RefSeq ORF: 885 bp

Locus ID: 744

UniProt ID: [Q15777](#)

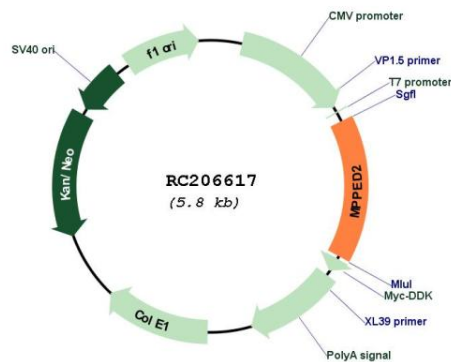
Cytogenetics: 11p14.1

Domains: Metallophos

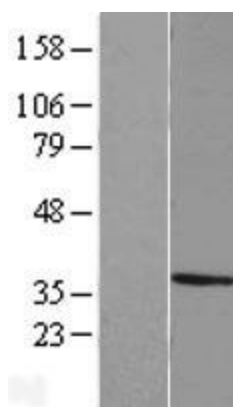
MW: 33.4 kDa

Gene Summary: This gene likely encodes a metallophosphoesterase. The encoded protein may play a role a brain development. Alternatively spliced transcript variants have been described. [provided by RefSeq, Feb 2009]

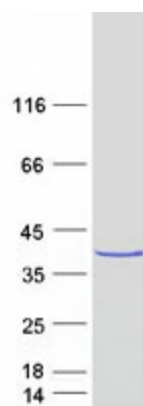
Product images:



Circular map for RC206617



Western blot validation of overexpression lysate (Cat# [LY419851]) using anti-DDK antibody (Cat# [TA50011-100]). Left: Cell lysates from untransfected HEK293T cells; Right: Cell lysates from HEK293T cells transfected with RC206617 using transfection reagent MegaTran 2.0 (Cat# [TT210002]).



Coomassie blue staining of purified MPPED2 protein (Cat# [TP306617]). The protein was produced from HEK293T cells transfected with MPPED2 cDNA clone (Cat# RC206617) using MegaTran 2.0 (Cat# [TT210002]).