

## Product datasheet for **RC206606**

### CPN1 (NM\_001308) Human Tagged ORF Clone

#### Product data:

Product Type:	Expression Plasmids
Product Name:	CPN1 (NM_001308) Human Tagged ORF Clone
Tag:	Myc-DDK
Symbol:	CPN1
Synonyms:	CPN; SCPN
Mammalian Cell Selection:	Neomycin
Vector:	pCMV6-Entry (PS100001)
E. coli Selection:	Kanamycin (25 ug/mL)



[View online »](#)

**ORF Nucleotide Sequence:**

>RC206606 ORF sequence  
 Red=Cloning site Blue=ORF Green=Tags(s)

TTTTGTAATACGACTCACTATAGGGCGGCCGGGAATTCGTGACTGGATCCGGTACCGAGGAGATCTGCC  
 GCC**CGGATCGCC**

ATGTCAGACCTGCTCTCAGTCTTCTCCACCTCCTCCTTCTCTTCAAGTTGGTTGCCCGGTGACCTTTC  
 GCCACCACCGCTATGATGATCTTGTGCGGACGCTGTACAAGGTGCAAAACGAATGCCCGGCATCACGCG  
 GGTCTACAGCATTGGGCGCAGCGTGGAGGGGAGACACCTCTACGTGCTGGAGTTCAGCGACCACCTGGA  
 ATCCACGAGCCCTTGAACAGAGGTCAAGTATGTGGGAAACATGCACGGCAACGAAGCGTTGGGCCGCG  
 AGCTGATGCTGCAGCTGTCGGAGTTTCTGTGCGAGGAGTCCGGAACAGGAACCAGCGCATCGTCCAGCT  
 CATCCAGGACACGCGCATTACATCCTGCCATCCATGAACCCCGACGGCTACGAGGTGGCTGCTGCCAG  
 GGCCAAACAAGCCTGGGTATCTAGTTGGCAGGAACAATGCAAAATGGAGTGGACCTGAACCGCAACTTCC  
 CTGATCTCAATACCTATATCTACTATAACGAGAAGTACGGAGGCCCAACCACCCTGCCCTTCCAGA  
 CAACTGGAAAAGTCAGGTGGAACCCGAGACCCGGGCGGTGATCCGGTGGATGCACTCCTTCAACTTTGTT  
 CTTTCAGCCAATCTCCACGGAGGGCGGTGGTGGCCAATTACCCGTATGACAAGTCTTTGAGCACCGGG  
 TCCGAGGGGTCCGCCGACCCGACACCCACGCCTGACGACAAGCTCTTCCAGAAGCTGGCCAAAGT  
 CTACTCCTATGCACATGGATGGATGTTCCAAGTTGGAAGTTCGGAGATTACTTCCAGATGGCATCACC  
 AATGGAGCTTCTGGTATTCTCTCAGCAAGGGAATGCAAGACTTAAATTCTCCATACCAACTGCTTTG  
 AGATCACGCTGGAAGTGAAGTTCGCAAGTTTCCCCCGAAGAGGAGTTACAGCGGGAGTGGCTGGGTAA  
 TCGGGAAGCCCTAATCCAGTTCCTGGAACAGGTTACCAGGGCATCAAGGGAATGGTGTGATGAGAAT  
 TACAATAATCTCGCCAATGCTGTCAATTTCTGTGAGTGGGATTAACCATGATGTCACCTCAGGTGACCATG  
 GTGATTACTTCCGGCTGCTGCTCCAGGTATCTACACTGTTAGTGCCACAGCACCTGGGTATGACCCAGA  
 GACAGTAACTGTGACCGTGGTCTGCGGAACCAACGTTGGTTAACTTCCACCTCAAAGAAGCATCCCT  
 CAAGTAAGCCCTGTGAGGAGAGCTCCACGAGAAGGCACGGAGTACAGGCCAAAGTGCAGCCCAAGCCA  
 GAAAGAAAGAAATGGAGATGAGGCAGCTGCAGAGAGGCCCTGCC

**ACGCGT**ACGCGGCCGCTCGAGCAGAAACTCATCTCAGAAGAGGATCTGGCAGCAAATGATATCCTGGATT  
 ACAAGGATGACGACGATAAGGTTTAA

**Protein Sequence:**

>RC206606 protein sequence  
 Red=Cloning site Green=Tags(s)

MSDLLSVFLHLLLLFKLVAPVTRHHRYYDDLVRTLYKVVQNECPGITRVYSIGRSVEGRHLYVLEFSDHPG  
 IHEPLEPEVKYVGNMHGNEALGREMLQLSEFLCEEFRNRNQRIVQLIQDTRIHILPSMNPDGYEVAQAQ  
 GPNKPGYLVRNNANGVDLNRNFPDLNTYIYYNEKYGGPNHLLPLPDNWKSQVEPETRAVIRWMHSFNFV  
 LSANLHGGAVVANYPYDKSFEHRVVRRTASTPTDDKLFQKLAKVYSYAHGWMFQGWNCGDYFPDGIT  
 NGASWYLSKGMQDFNYLHTNCFEITLLELSCDKFPPEEELQREWLGNREALIQFLEQVHQIKGMVLDEN  
 YNNLANAVISVSGINHDVTSGDHGYFRLLLPGIYTVSATAPGYDPETVTVTVGPAEPTLVNFHLKRSIP  
 QVSPVRRAPSRRHGVRKVPQARKKEMEMRQLQRGPA

**TR**TRPLEQKLISEEDLAANDILDYKDDDDKV

**Chromatograms:**

[https://cdn.origene.com/chromatograms/mk6328\\_f06.zip](https://cdn.origene.com/chromatograms/mk6328_f06.zip)

**Restriction Sites:**

Sgfl-Mlul

Cloning Scheme:



ACCN: NM\_001308

ORF Size: 1374 bp

OTI Disclaimer: The molecular sequence of this clone aligns with the gene accession number as a point of reference only. However, individual transcript sequences of the same gene can differ through naturally occurring variations (e.g. polymorphisms), each with its own valid existence. This clone is substantially in agreement with the reference, but a complete review of all prevailing variants is recommended prior to use. [More info](#)

OTI Annotation: This clone was engineered to express the complete ORF with an expression tag. Expression varies depending on the nature of the gene.

Components: The ORF clone is ion-exchange column purified and shipped in a 2D barcoded Matrix tube containing 10ug of transfection-ready, dried plasmid DNA (reconstitute with 100 ul of water).

- Reconstitution Method:
1. Centrifuge at 5,000xg for 5min.
  2. Carefully open the tube and add 100ul of sterile water to dissolve the DNA.
  3. Close the tube and incubate for 10 minutes at room temperature.
  4. Briefly vortex the tube and then do a quick spin (less than 5000xg) to concentrate the liquid at the bottom.
  5. Store the suspended plasmid at -20°C. The DNA is stable for at least one year from date of shipping when stored at -20°C.

RefSeq: [NM\\_001308.3](#)

RefSeq Size: 1756 bp

RefSeq ORF: 1377 bp

Locus ID: 1369

UniProt ID: [P15169](#)

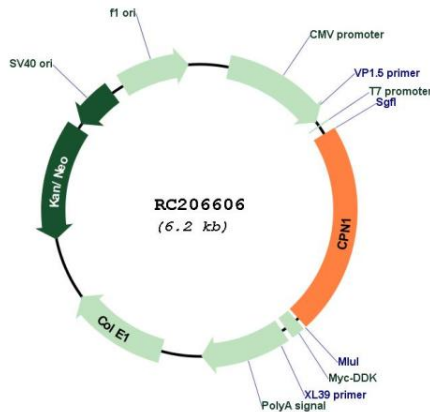
Cytogenetics: 10q24.2

**Protein Families:** Druggable Genome, Protease, Secreted Protein

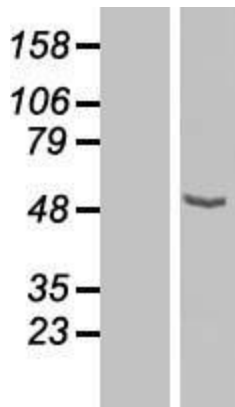
**MW:** 52.3 kDa

**Gene Summary:** Carboxypeptidase N is a plasma metallo-protease that cleaves basic amino acids from the C terminal of peptides and proteins. The enzyme is important in the regulation of peptides like kinins and anaphylatoxins, and has also been known as kininase-1 and anaphylatoxin inactivator. This enzyme is a tetramer comprised of two identical regulatory subunits and two identical catalytic subunits; this gene encodes the catalytic subunit. Mutations in this gene can be associated with angioedema or chronic urticaria resulting from carboxypeptidase N deficiency. [provided by RefSeq, Jul 2008]

**Product images:**



Circular map for RC206606



Western blot validation of overexpression lysate (Cat# [LY420016]) using anti-DDK antibody (Cat# [TA50011-100]). Left: Cell lysates from un-transfected HEK293T cells; Right: Cell lysates from HEK293T cells transfected with RC206606 using transfection reagent MegaTran 2.0 (Cat# [TT210002]).