

## Product datasheet for RC206602

### Endothelin 2 (EDN2) (NM\_001956) Human Tagged ORF Clone

#### Product data:

**Product Type:** Expression Plasmids  
**Product Name:** Endothelin 2 (EDN2) (NM\_001956) Human Tagged ORF Clone  
**Tag:** Myc-DDK  
**Symbol:** Endothelin 2  
**Synonyms:** ET-2; ET2; PPET2  
**Mammalian Cell Selection:** Neomycin  
**Vector:** pCMV6-Entry (PS100001)  
**E. coli Selection:** Kanamycin (25 ug/mL)  
**ORF Nucleotide Sequence:** >RC206602 ORF sequence  
 Red=Cloning site Blue=ORF Green=Tags(s)

TTTTGTAATACGACTCACTATAGGGCGGCCGGAATTCGTCGACTGGATCCGGTACCGAGGAGATCTGCC  
 GCC**CGATCGCC**

ATGGTCTCCGTGCCTACCACCTGGTGCCTCCGTTGCGCTAGCCCTGCTCGTGGCCCTGCATGAAGGGAAGG  
 GCCAGGCTGTGCCACCCTGGAGCAGCCAGCGTCTCATCTCATGCCAAGGCACCCACCTTCGGCTTCG  
 CCGTTGCTCCTGCAGCTCCTGGCTCGACAAGGAGTGCCTACTTCTGCCACTTGGACATCATCTGGGTG  
 AACACTCTGAACAGACAGCTCCTTACGGCCTGGGAAACCCGCCAAGACGCCGGCGCCGCTCCCTGCCAA  
 GGCCTGTGAGTGTCCAGTCCAGTCCAGGACCCCGCCTGTGCCACCTTCTGCCTTGAAGGCCCTGGACTGA  
 AGCCGGGGCAGTCCCAAGCCGGAAGTCCCTGCAGACGTGTTCCAGACTGGCAAGACAGGGGCCACTACA  
 GGAGAGCTTCTCAAAGGCTGAGGGACATTTCCACAGTCAAGAGCCTCTTTGCCAAGCGACAACAGGAGG  
 CCATGCGGGAGCCTCGGTCCACACATTCAGGTGGAGGAAGAGA

**ACGCGT**ACGCGGCCGCTCGAGCAGAACTCATCTCAGAAGAGGATCTGGCAGCAAATGATATCCTGGATT  
 ACAAGGATGACGACGATAAGGTTTAA

**Protein Sequence:** >RC206602 protein sequence  
 Red=Cloning site Green=Tags(s)

MVSVPTTWCSVALALLVALHEGKGQAAATLEQPASSSHAQGTHLRLRRCSSSWLDKECVYFCHLDIIW  
 NTPEQTAPYGLGNPPRRRRRSLPRRCQCSSARDPACATFCLRRPWTEAGAVPSRKRSPADVFTGKTGATT  
 GELLQRLRDI STVKSLFAKRQQEAMREPRSTHSRWRKR

**TRTRPLEQKLI**SEEDLAANDILDYKDDDDKV

**Chromatograms:** [https://cdn.origene.com/chromatograms/mk6329\\_g01.zip](https://cdn.origene.com/chromatograms/mk6329_g01.zip)



[View online »](#)



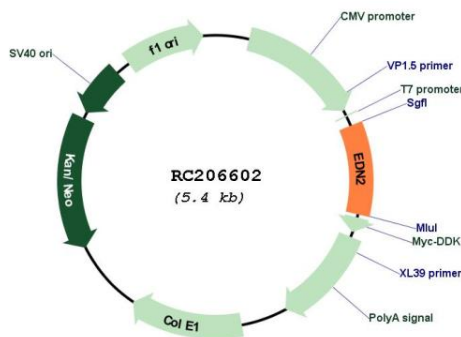
**Cytogenetics:** 1p34.2

**Protein Families:** Druggable Genome, Secreted Protein

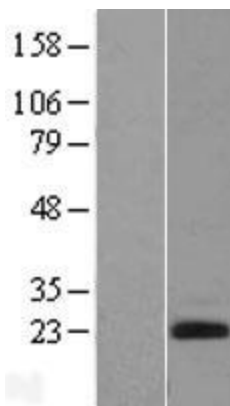
**MW:** 20 kDa

**Gene Summary:** This gene encodes a member of the endothelin protein family of secretory vasoconstrictive peptides. The preproprotein is processed to a short mature form which functions as a ligand for the endothelin receptors that initiate intracellular signaling events. This gene product is involved in a wide range of biological processes, such as hypertension and ovulation. Altered expression of this gene is implicated in tumorigenesis. Alternative splicing results in multiple transcript variants. [provided by RefSeq, Oct 2014]

**Product images:**



Circular map for RC206602



Western blot validation of overexpression lysate (Cat# [LY419628]) using anti-DDK antibody (Cat# [TA50011-100]). Left: Cell lysates from untransfected HEK293T cells; Right: Cell lysates from HEK293T cells transfected with RC206602 using transfection reagent MegaTran 2.0 (Cat# [TT210002]).