

## Product datasheet for **RC206599**

### FRZB (NM\_001463) Human Tagged ORF Clone

#### Product data:

**Product Type:** Expression Plasmids  
**Product Name:** FRZB (NM\_001463) Human Tagged ORF Clone  
**Tag:** Myc-DDK  
**Symbol:** FRZB  
**Synonyms:** FRE; FRITZ; FRP-3; FRZB-1; FRZB-PEN; FRZB1; FZRB; hFIZ; OS1; SFRP3; SRFP3  
**Mammalian Cell Selection:** Neomycin  
**Vector:** pCMV6-Entry (PS100001)  
**E. coli Selection:** Kanamycin (25 ug/mL)  
**ORF Nucleotide Sequence:** >RC206599 representing NM\_001463  
Red=Cloning site Blue=ORF Green=Tags(s)

TTTTGTAATACGACTCACTATAGGGCGGCCGGAATTCGTCGACTGGATCCGGTACCGAGGAGATCTGCC  
GCC**CGATCGCC**

ATGGTCTGCGGCAGCCCGGGAGGGATGCTGCTGCTGCGGGCCGGGCTGCTTGCCCTGGCTGCTCTGCC  
TGCTCCGGGTGCCCGGGCTCGGGCTGCAGCCTGTGAGCCGTCGCGATCCCCCTGTGCAAGTCCCTGCC  
CTGGAACATGACTAAGATGCCCAACCACCTGCACCACAGCACTCAGGCCAACGCCATCCTGGCCATCGAG  
CAGTTCGAAGGTCTGCTGGCACCCACTGCAGCCCGATCTGCTCTTCTCTCTGTGCCATGTACGCGC  
CCATCTGCACCATGACTTCCAGCACGAGCCCATCAAGCCCTGTAAGTCTGTGTGCGAGCGGGCCCGCA  
GGGCTGTGAGCCATACTCATCAAGTACCGCCACTCGTGGCCGGAACCTGGCCCTGCGAGGAGCTGCCA  
GTGTACGACAGGGCGTGTGCATCTCTCCCGAGGCCATCGTTACTGCGGACGGAGCTGATTTTCCTATGG  
ATTCTAGTAACGAACTGTAGAGGGGCAAGCAGTGAACGCTGTAATGTAAGCCTATTAGAGCTACACA  
GAAGACCTATTTCCGGAACAATTACAATATGTCATTCGGGCTAAAGTTAAAGAGATAAAGACTAAGTGC  
CATGATGTGACTGCAGTAGTGGAGGTGAAGGAGATTCTAAAGTCTCTCTGGTAAACATTCACGGGACA  
CTGTCAACCTCTATACCAGCTCTGGCTGCCTCTGCCCTCCACTAATGTTAATGAGGAATATATCATCAT  
GGGCTATGAAGATGAGGAACGTTCCAGATTACTCTTGGTGAAGGCTCTATAGCTGAGAAGTGAAGGAT  
CGACTCGGTAAAAAAGTTAAGCGCTGGGATATGAAGCTTCGTCATCTTGGACTCAGTAAAAGTGATTCTA  
GCAATAGTGATTCCACTCAGAGTCAGAAGTCTGGCAGGAACTCGAACCCCGCAAGCACGCAAC

**ACGCGT**ACGCGGCCGCTCGAGCAGAACTCATCTCAGAAGAGGATCTGGCAGCAATGATATCCTGGATT  
ACAAGGATGACGACGATAAGGTTTAA



[View online »](#)

**Protein Sequence:** >RC206599 representing NM\_001463  
Red=Cloning site Green=Tags(s)

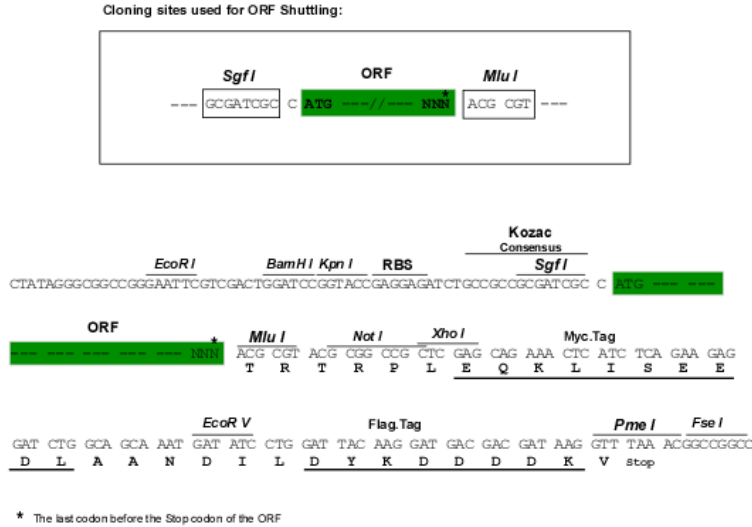
MVCGSPGGMLLLRAGLLALAALCLLRVPGARAAACEPVRIPLCKSLPWNMTKMPNHLHHSTQANAIIAIE  
 QFEGLLGTHCSPDLLFFLCAMYAPICTIDFQHEPIKPKCSVCERARQGCEPILIKYRHSWPENLACEELP  
 VYDRGVCISPEAIVTADGADFPMDSSNGNCRGASSERCKCKPIRATQKTYFRNNYNYVIRAKVKEIKTKC  
 HDVTAVVEVKEILKSSLVNIIPRDVNL YTSSGCLCPPLNVNEEYIIMGYEDEERSRLLLVEGSIAEKWKD  
 RLGGKVKRWDMKLRHLGLSKSDSSNSDSTQSQKSGRNSNPRQARN

TRTRPLEQKLISEEDLAANDILDYKDDDDKV

**Chromatograms:** [https://cdn.origene.com/chromatograms/mg2392\\_e03.zip](https://cdn.origene.com/chromatograms/mg2392_e03.zip)

**Restriction Sites:** SgfI-MluI

**Cloning Scheme:**



**ACCN:** NM\_001463

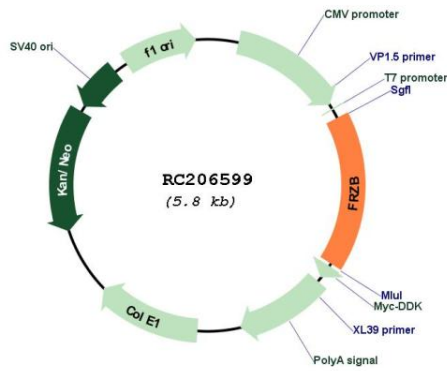
**ORF Size:** 975 bp

**OTI Disclaimer:** Due to the inherent nature of this plasmid, standard methods to replicate additional amounts of DNA in E. coli are highly likely to result in mutations and/or rearrangements. Therefore, OriGene does not guarantee the capability to replicate this plasmid DNA. Additional amounts of DNA can be purchased from OriGene with batch-specific, full-sequence verification at a reduced cost. Please contact our customer care team at [custsupport@origene.com](mailto:custsupport@origene.com) or by calling 301.340.3188 option 3 for pricing and delivery.

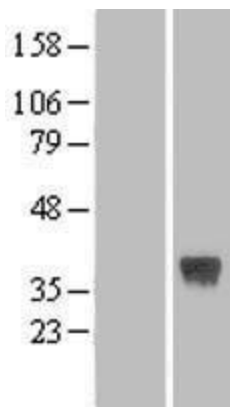
The molecular sequence of this clone aligns with the gene accession number as a point of reference only. However, individual transcript sequences of the same gene can differ through naturally occurring variations (e.g. polymorphisms), each with its own valid existence. This clone is substantially in agreement with the reference, but a complete review of all prevailing variants is recommended prior to use. [More info](#)

<b>OTI Annotation:</b>	This clone was engineered to express the complete ORF with an expression tag. Expression varies depending on the nature of the gene.
<b>Components:</b>	The ORF clone is ion-exchange column purified and shipped in a 2D barcoded Matrix tube containing 10ug of transfection-ready, dried plasmid DNA (reconstitute with 100 ul of water).
<b>Reconstitution Method:</b>	<ol style="list-style-type: none"><li>1. Centrifuge at 5,000xg for 5min.</li><li>2. Carefully open the tube and add 100ul of sterile water to dissolve the DNA.</li><li>3. Close the tube and incubate for 10 minutes at room temperature.</li><li>4. Briefly vortex the tube and then do a quick spin (less than 5000xg) to concentrate the liquid at the bottom.</li><li>5. Store the suspended plasmid at -20°C. The DNA is stable for at least one year from date of shipping when stored at -20°C.</li></ol>
<b>Note:</b>	Plasmids are not sterile. For experiments where strict sterility is required, filtration with 0.22um filter is required.
<b>RefSeq:</b>	<a href="#">NM_001463.4</a>
<b>RefSeq Size:</b>	2058 bp
<b>RefSeq ORF:</b>	978 bp
<b>Locus ID:</b>	2487
<b>UniProt ID:</b>	<a href="#">Q92765</a>
<b>Cytogenetics:</b>	2q32.1
<b>Domains:</b>	FRI, NTR
<b>Protein Families:</b>	Druggable Genome, ES Cell Differentiation/IPS, Secreted Protein, Stem cell relevant signaling - Wnt Signaling pathway
<b>MW:</b>	36.1 kDa
<b>Gene Summary:</b>	The protein encoded by this gene is a secreted protein that is involved in the regulation of bone development. Defects in this gene are a cause of female-specific osteoarthritis (OA) susceptibility. [provided by RefSeq, Apr 2010]

Product images:



Circular map for RC206599



Western blot validation of overexpression lysate (Cat# [LY400569]) using anti-DDK antibody (Cat# [TA50011-100]). Left: Cell lysates from untransfected HEK293T cells; Right: Cell lysates from HEK293T cells transfected with RC206599 using transfection reagent MegaTran 2.0 (Cat# [TT210002]).