

Product datasheet for **RC206598**

CD42b (GP1BA) (NM_000173) Human Tagged ORF Clone

Product data:

Product Type:	Expression Plasmids
Product Name:	CD42b (GP1BA) (NM_000173) Human Tagged ORF Clone
Tag:	Myc-DDK
Symbol:	CD42b
Synonyms:	BDPLT1; BDPLT3; BSS; CD42B; CD42b-alpha; DBPLT3; GP1B; GPIbA; GPIbalpha; VWDP
Mammalian Cell Selection:	Neomycin
Vector:	pCMV6-Entry (PS100001)
E. coli Selection:	Kanamycin (25 ug/mL)



[View online »](#)

ORF Nucleotide Sequence:

>RC206598 ORF sequence
 Red=Cloning site Blue=ORF Green=Tags(s)

TTTTGTAATACGACTCACTATAGGGCGGCCGGAATTCGTCGACTGGATCCGGTACCGAGGAGATCTGCC
 GCC**CGCATCGCC**

ATGCCTCTCCTCCTTGTCTGCTCTGCTGCCAAGCCCCTTACACCCCCACCCCATCTGTGAGGTCTCCA
 AAGTGGCCAGCCACCTAGAAGTGAAGTGTGACAAGAGGAATCTGACAGCGCTGCCTCCAGACCTGCCGAA
 AGACACAACCATCCTCCACCTGAGTGAGAACCTCCTGTACACCTTCTCCCTGGCAACCCTGATGCCTTAC
 ACTCGCTCACTCAGCTGAACCTAGATAGGTGCGAGCTACCAAGCTCCAGGTCGATGGGACGCTGCCAG
 TGCTGGGACCCTGGATCTATCCACAATCAGCTGCAAAGCCTGCCCTTGTAGGGCAGACACTGCCTGC
 TCTCACCGTCTGGACGTCTCCTCAACCGGTGACCTCGCTGCCTTTGGTGCCTGCGTGGTCTTGGC
 GAACTCCAAGAGCTCTACCTGAAAGGCAATGAGCTGAAGACCCTGCCCCAGGGCTCCTGACGCCACAC
 CCAAGCTGGAGAAGCTCAGTCTGGCTAACAACTTACTGAGCTCCCCGCTGGCTCCTGAATGGGT
 GGAGAATCTGCACCCCTTCTCCTCAAGAGAAGCTCGCTGTATACAATACCAAGGGCTTTTTTGGGTCC
 CACCTCCTGCCTTTTGTCTTCTCCACGGGAACCCTGGTTATGCAACTGTGAGATCCTCTATTTTCGTC
 GCTGGCTGCAGGACAATGCTGAAAATGTCTACGTATGGAAGCAAGGTGTGGACGTCAAGGCCATGACCTC
 TAACGTGGCCAGTGTGACGTGTGACAATTCAGACAAGTTCCCGTCTACAAATACCCAGGAAAGGGGTGC
 CCCACCCTTGGTGTGAGGTGACACAGACCTATATGATTACTACCCAGAAGAGGACACTGAGGGCGATA
 AGGTGCGTGCCACAAGGACTGTGGTCAAGTTCCCACCAAAGCCCATACAACCCCTGGGGTCTATTCTA
 CTCATGGTCCACTGCTTCTAGACAGCCAAATGCCCTCCTTGCATCCAACACAAGAATCCACTAAG
 GAGCAGACCACATTCCCACCTAGATGGACCCAAATTTACACTTCACATGGAATCCATCACATTTCTCCA
 AAATCCAAAATCCACTACTGAACCAACCCCAAGCCCGACCACCTCAGAGCCCGTCCCGGAGCCCGCC
 AAACATGACCACCTGGAGCCCACTCAAGCCGACCACCCAGAGCCACCTCAGAGCCCGCCCGCCAGC
 CCGACCACCCCGAGCCACCCCAATCCCGACCATCGCCACAAGCCCGACCATCCTGGTGTCTGCCACAA
 GCCTGATCACTCCAAAAAGCACATTTTTAACTACCACAAAACCCGTACTCTTAGAATCCACAAAAA
 AACCATCCCTGAACTTGATCAGCCACCAAAGCTCCGTGGGGTGTCCAAGGGCATTGGAGAGCTCCAGA
 AATGACCTTTTCTCCACCCGACTTTTGTGCCTCCTCCCTGGGCTTCTATGTCTTGGGTCTTCTTCT
 GGCTGCTTTTGCCTCTGTGGTCTCATCTGCTGCTGAGCTGGGTGGGCATGTGAAACCAGGCCCT
 GGACTCTGGCCAAGGTGTGCTCTGACCACAGCCACACAACCACACACCTGGAGCTGCAGAGGGGACGG
 CAAGTGACAGTGCCTGGCCTGGCTGCTTCTTCTCGAGTTGCTTCCACTTCCGCTCCAGCCTCT
 TCTGTGGGTACGGCCTAATGGCCGTCTGGGGCCTCTAGTGGCAGGAAGGAGGCCCTCAGCTCTGAGTCA
 GGGTCTGGTCTAGGACCTGCTGAGCACAGTGAAGTACTCTGGCCACAGCCTC

ACGCGTACGCGGCCGCTCGAGCAGAACTCATCTCAGAAGAGGATCTGGCAGCAAATGATATCCTGGATT
 ACAAGGATGACGACGATAAGGTTTAA

Protein Sequence:

>RC206598 protein sequence
 Red=Cloning site Green=Tags(s)

MPLLLLLLLLLPSPLPHHPICEVSKVASHLEVNCDKRNLTALPPDLPKDITLHLSENLLYTFSLATLMPY
 TRLTQLNLDRCLETKLQVDGTLVPLGTLDL SHNQLQSLPLLQTLPALTVLDVSNRLTSLPLGALRGLG
 ELQELYLKGNELKTLPPGLLTPTPKLEKLSLANNLTELPAGLLNGLNLDLTLQENSLYTIKGFSGS
 HLLPFAFLHGNPWL CNCEILYFRRWLQDNAENVYVWKQGV DVKAMTSNVA SVQCDNSDKFPVYKYPGKGC
 PTLGDEGDTLDYDYP EEDTEGDKVRATRTVVKFPTKAHTTPWGLFYSWSTASLDSQMPSSLHPTQESTK
 EQTTFPPRWP NFNTHMESITFSKTPKSTTEPTSPPTSEPVPEPAPNMTLEPTSPPTPEPTSE PAPS
 PTTPEPTPIPTIATSPTILVSATSLITPKSTFLTTTKPVSLLESTKKTIPELDQPPKLRGVLQGHLESSR
 NDPFLHPDFCCLLPLGFVYVGLFWLLFASVVLILLWSVGHVKPQALDSGQGAALTTATQTTHLELQRGR
 QVTVPRALLFLRGLPTFRSSLFLWVRPNRGLPLVAGRPSALSQGRGQDLLSTVSI RYSGHSL

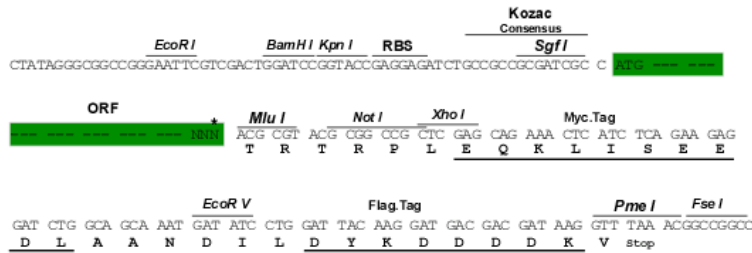
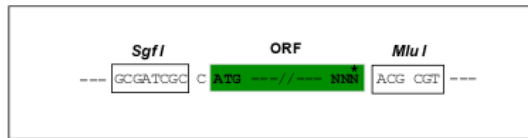
TRTRPLEQKLI SEEDLAANDILDYKDDDDKV

Chromatograms: https://cdn.origene.com/chromatograms/mk6231_h06.zip

Restriction Sites: SgfI-MluI

Cloning Scheme:

Cloning sites used for ORF Shuttling:



* The last codon before the Stop codon of the ORF

ACCN: NM_000173

ORF Size: 1878 bp

OTI Disclaimer: The molecular sequence of this clone aligns with the gene accession number as a point of reference only. However, individual transcript sequences of the same gene can differ through naturally occurring variations (e.g. polymorphisms), each with its own valid existence. This clone is substantially in agreement with the reference, but a complete review of all prevailing variants is recommended prior to use. [More info](#)

OTI Annotation: This clone was engineered to express the complete ORF with an expression tag. Expression varies depending on the nature of the gene.

Components: The ORF clone is ion-exchange column purified and shipped in a 2D barcoded Matrix tube containing 10ug of transfection-ready, dried plasmid DNA (reconstitute with 100 ul of water).

Reconstitution Method:

1. Centrifuge at 5,000xg for 5min.
2. Carefully open the tube and add 100ul of sterile water to dissolve the DNA.
3. Close the tube and incubate for 10 minutes at room temperature.
4. Briefly vortex the tube and then do a quick spin (less than 5000xg) to concentrate the liquid at the bottom.
5. Store the suspended plasmid at -20°C. The DNA is stable for at least one year from date of shipping when stored at -20°C.

RefSeq: [NM_000173.3](#), [NP_000164.3](#)

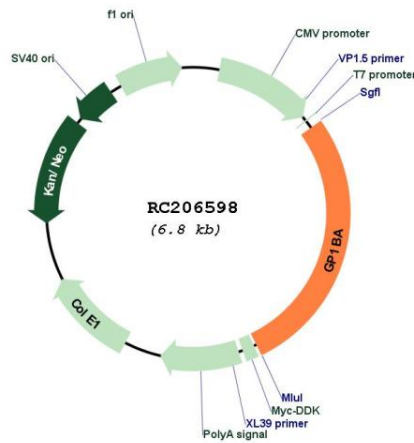
RefSeq Size: 2501 bp

RefSeq ORF: 1959 bp

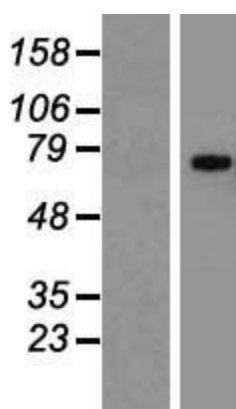
Locus ID: 2811
UniProt ID: [P07359](#)
Cytogenetics: 17p13.2
Protein Families: Druggable Genome, Transmembrane
Protein Pathways: ECM-receptor interaction, Hematopoietic cell lineage
MW: 69 kDa

Gene Summary: Glycoprotein Ib (GP Ib) is a platelet surface membrane glycoprotein composed of a heterodimer, an alpha chain and a beta chain, that is linked by disulfide bonds. The Gp Ib functions as a receptor for von Willebrand factor (VWF). The complete receptor complex includes noncovalent association of the alpha and beta subunits with platelet glycoprotein IX and platelet glycoprotein V. The binding of the GP Ib-IX-V complex to VWF facilitates initial platelet adhesion to vascular subendothelium after vascular injury, and also initiates signaling events within the platelet that lead to enhanced platelet activation, thrombosis, and hemostasis. This gene encodes the alpha subunit. Mutations in this gene result in Bernard-Soulier syndromes and platelet-type von Willebrand disease. The coding region of this gene is known to contain a polymorphic variable number tandem repeat (VNTR) domain that is associated with susceptibility to nonarteritic anterior ischemic optic neuropathy. [provided by RefSeq, Oct 2013]

Product images:



Circular map for RC206598



Western blot validation of overexpression lysate (Cat# [LY424885]) using anti-DDK antibody (Cat# [TA50011-100]). Left: Cell lysates from untransfected HEK293T cells; Right: Cell lysates from HEK293T cells transfected with RC206598 using transfection reagent MegaTran 2.0 (Cat# [TT210002]).