

## Product datasheet for **RC206588**

### **PDE1B (NM\_000924) Human Tagged ORF Clone**

#### **Product data:**

Product Type:	Expression Plasmids
Product Name:	PDE1B (NM_000924) Human Tagged ORF Clone
Tag:	Myc-DDK
Symbol:	PDE1B
Synonyms:	HEL-S-79p; PDE1B1; PDES1B
Mammalian Cell Selection:	Neomycin
Vector:	pCMV6-Entry (PS100001)
E. coli Selection:	Kanamycin (25 ug/mL)



[View online »](#)

**ORF Nucleotide Sequence:**

>RC206588 ORF sequence  
 Red=Cloning site Blue=ORF Green=Tags(s)

TTTTGTAATACGACTCACTATAGGGCGGCCGGAATTCGTCGACTGGATCCGGTACCGAGGAGATCTGCC  
 GCC**GCGATCGCC**

ATGGAGCTGTCCCCCGCAGTCCTCCGGAGATGCTGGAGGAGTCGGATTGCCCGTCAACCCTGGAGCTGA  
 AGTCAGCCCCCAGCAAGAAGATGTGGATTAAGCTTCGGTCTCTGCTGCGCTACATGGTGAAGCAGTTGGA  
 GAATGGGGAGATAAACATTGAGGAGCTGAAGAAAAATCTGGAGTACACAGCTTCTCTGCTGGAAGCCGTC  
 TACATAGATGAGACACGGCAAATCTTGGACACGGAGGACGAGCTGCAGGAGCTGCGGTGAGATGCCGTGC  
 CTTCCGAGGTGCGGGACTGGCTGGCCTCCACCTTCAACCAGCAGGCCCGGCCAAAGGCCCGGAGCAGA  
 GGAGAAGCCCAAGTTCGAAGCATTGTGCACGCTGTGCAGGCTGGGATCTTCGTGGAACGGATGTTCCGG  
 AGAACATACACCTCTGTGGGCCCACTTACTCTACTGCGGTTCTCAACTGTCTCAAGAACCTGGATCTCT  
 GGTGCTTTGATGTCTTTTCTTGAACCAGGCAGCAGATGACCATGCCCTGAGGACCATTGTTTTGAGTT  
 GCTGACTCGGCATAACCTCATCAGCCGCTCAAGATTCCCACTGTGTTTTGATGAGTTTCTGGATGCC  
 TTGGAGACAGGCTATGGGAAGTACAAGAATCCTTACCACAACCAGATCCACGCAGCCGATGTTACCCAGA  
 CAGTCCATTGCTTCTTGCTCCGCACAGGGATGGTGCACCTGCTCGGAGATTGAGCTCCTGGCCATCAT  
 CTTTGTGCTGAGCTATCCATGATTATGAGCACACGGGCACTACCAACAGCTTCCACATCCAGACCAAGTCA  
 GAATGTGCCATCGTGTACAATGATCGTTCAGTGTGGAGAATCACCACATCAGCTCTGTTTTCCGATTGA  
 TGCAGGATGATGAGATGAACATTTTCAACCTCACCAAGGATGAGTTTGTAGAAGTCCGAGCCCTGGT  
 CATTGAGATGGTGTGGCCACAGACATGCTGCCATTTCCAGCAAGTGAAGACCATGAAGACAGCCTTG  
 CAACAGCTGGAGAGGATTGACAAGCCCAAGGCCCTGTCTACTGCTCCATGCTGCTGACATCAGCCACC  
 CAACCAAGCAGTGGTTGGTCCACAGCCGTTGGACCAAGGCCCTCATGGAGGAATTTCTTCGTCAGGTTGA  
 CAAGGAGCAGAGTTGGGCTGCCCTTTTCTCCACTCTGTGACCGCACTTCCACTCTAGTGGCACAGTCT  
 CAGATAGGGTTTATCGACTTCATTGTGGAGCCACATTCTCTGTGCTGACTGACGTGGCAGAGAAGAGTG  
 TTCAGCCCTGGCGGATGAGGACTCCAAGTCTAAAAACCAGCCAGCTTTCAGTGGGCCAGCCCTCTCT  
 GGATGTGGAAGTGGGAGACCCCAACCCTGATGTGGTCAAGCTTTCGTTCCACCTGGGTCAAGCGCATTCA  
 GAGAATAAGCAGAAATGGAAGGAACGGGCAGCAAGTGGCATCACCAACCAGATGTCCATTGACGAGCTGT  
 CCCCTGTGAAGAAGAGGCCCCCATCCCTGCCGAAGATGAACACAACCAGAATGGGAATCTGGAT

**ACGCGT**ACGCGGCCGCTCGAGCAGAAACTCATCTCAGAAGAGGATCTGGCAGCAAATGATATCTGGATT  
 ACAAGGATGACGACGATAAGGTTTAA

**Protein Sequence:**

>RC206588 protein sequence  
 Red=Cloning site Green=Tags(s)

MELSPRSPPEMLEESDCPSPLELKSAPSKMWIKLRSLRLRYMVKQLENGEINIEELKKNLEYTASLLEAV  
 YIDETRQILDTEDELQELRSDAVPSEVRDWLASTFTQARAKGRRAEKPFRSIVHAVQAGIFVERMFR  
 RTYTSVGPSTAVLNCLKNLDLWCFDVFSLNQAADDHALRTIVFELLTRHNLISRFKIPTVFLMSFLDA  
 LETGYGKYKNPYHNQIHAADVTQTVHCFLLRTGMVHCLSEIELLAIIFAAAIHDYEHTGTNSFHIQTKS  
 ECAIVYNDRSLVLENHHISSVFRMLQDDEMNIIFINLTKDEFVELRALVIEMVLATDMSCHFQQVKMTAL  
 QQLERIDKPKALSLLLHAADISHPTKQWLVHSRWTALMEEFFRQGDKEAELGLPFSPLCDRTSTLVAQS  
 QIGFIDFIVEPTFSVLTDVAEKSVQPLADEDSSKNQPSFQWRQPSLDVEVGDNPDPVVSFRSTWVKRIQ  
 ENKQKWKERAASGITNQMSIDELSPCEEEAPPSPAEDHQNQGNLD

**TRTRPLEQKLI**SEEDLAANDILDYKDDDDKV

**Chromatograms:**

[https://cdn.origene.com/chromatograms/mk6197\\_d07.zip](https://cdn.origene.com/chromatograms/mk6197_d07.zip)

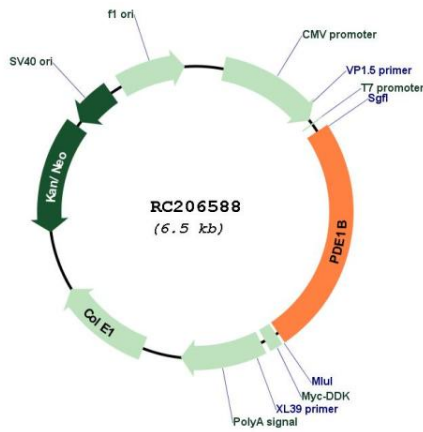
**Restriction Sites:**

SgfI-MluI

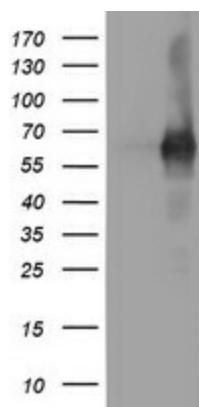


**UniProt ID:** [Q01064](#)  
**Cytogenetics:** 12q13.2  
**Domains:** PDEase, HDc  
**Protein Families:** Druggable Genome  
**Protein Pathways:** Calcium signaling pathway, Progesterone-mediated oocyte maturation, Purine metabolism  
**MW:** 61.4 kDa  
**Gene Summary:** The protein encoded by this gene belongs to the cyclic nucleotide phosphodiesterase (PDE) family, and PDE1 subfamily. Members of the PDE1 family are calmodulin-dependent PDEs that are stimulated by a calcium-calmodulin complex. This PDE has dual-specificity for the second messengers, cAMP and cGMP, with a preference for cGMP as a substrate. cAMP and cGMP function as key regulators of many important physiological processes. Alternatively spliced transcript variants encoding different isoforms have been described for this gene. [provided by RefSeq, Jul 2011]

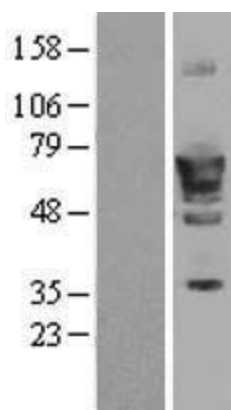
**Product images:**



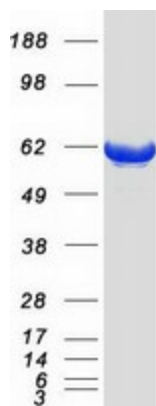
Circular map for RC206588



HEK293T cells were transfected with the pCMV6-ENTRY control (Cat# [PS100001], Left lane) or pCMV6-ENTRY PDE1B (Cat# RC206588, Right lane) cDNA for 48 hrs and lysed. Equivalent amounts of cell lysates (5 ug per lane) were separated by SDS-PAGE and immunoblotted with anti-PDE1B (Cat# [TA503319]). Positive lysates [LY400337] (100ug) and [LC400337] (20ug) can be purchased separately from OriGene.



Western blot validation of overexpression lysate (Cat# [LY400337]) using anti-DDK antibody (Cat# [TA50011-100]). Left: Cell lysates from untransfected HEK293T cells; Right: Cell lysates from HEK293T cells transfected with RC206588 using transfection reagent MegaTran 2.0 (Cat# [TT210002]).



Coomassie blue staining of purified PDE1B protein (Cat# [TP306588]). The protein was produced from HEK293T cells transfected with PDE1B cDNA clone (Cat# RC206588) using MegaTran 2.0 (Cat# [TT210002]).