

Product datasheet for RC206585

Calcineurin B (PPP3R1) (NM_000945) Human Tagged ORF Clone

Product data:

Product Type: Expression Plasmids
Product Name: Calcineurin B (PPP3R1) (NM_000945) Human Tagged ORF Clone
Tag: Myc-DDK
Symbol: Calcineurin B
Synonyms: CALNB1; CNB; CNB1
Mammalian Cell Selection: Neomycin
Vector: pCMV6-Entry (PS100001)
E. coli Selection: Kanamycin (25 ug/mL)
ORF Nucleotide Sequence: >RC206585 ORF sequence
 Red=Cloning site Blue=ORF Green=Tags(s)

TTTTGTAATACGACTCACTATAGGGCGGCCGGAATTCGTCGACTGGATCCGGTACCGAGGAGATCTGCC
 GCC**CGGATCGCC**

ATGGGAAATGAGGCAAGTTATCCTTTGGAAATGTGCTCACACTTTGATGCGGATGAAATTTAAAGGCTAG
 GAAAGAGATTTAAGAAGCTTGATTTGGACAATTCTGGTCTTTGAGTGTGGAAAGATTTCATGTCTCTGCC
 TGAGTTACAACAGAATCCTTTAGTACAGCGAGTAATAGATATATTCGACACAGATGGGAATGGAGAAGTA
 GACTTTAAAGAATTCATTGAGGGCGTCTCTCAGTTCAGTGTCAAAGGAGATAAGGAGCAGAAATTGAGGT
 TTGCTTTCCGTATCTATGACATGGATAAAGATGGCTATATTTCCAATGGGGAACCTTCCAGGTATTGAA
 GATGATGGTGGGGAACAATCTGAAAGATACACAGTTACAGCAAATGTAGACAAAACCATAATAAATGCA
 GATAAGGATGGAGATGGAAGAATATCCTTTGAAGAATTCTGTGCTGTTGTAGGTGGCCTAGATATCCACA
 AAAAGATGGTGGTAGATGTG

ACGCGTACGCGGCCGCTCGAGCAGAAACTCATCTCAGAAGAGGATCTGGCAGCAAATGATATCCTGGATT
 ACAAGGATGACGACGATAAGGTTTAA

Protein Sequence: >RC206585 protein sequence
 Red=Cloning site Green=Tags(s)

MGNEASYPLEMCSHFDADEIKRLGKRFKLDLDSGSLVVEEFMSLPELQQNPLVQRVIDIFDTDGNGEV
 DFKEFIEGVSQFSVKGDKEQKLRFARIYDMKDGYSINGELFQVLKMMVGNLKDQLQQIVDKTIINA
 DKDGDGRISFEFCAVVGGLDIHKMVDV

TRTRPLEQKLISEEDLAANDILDYKDDDDKV

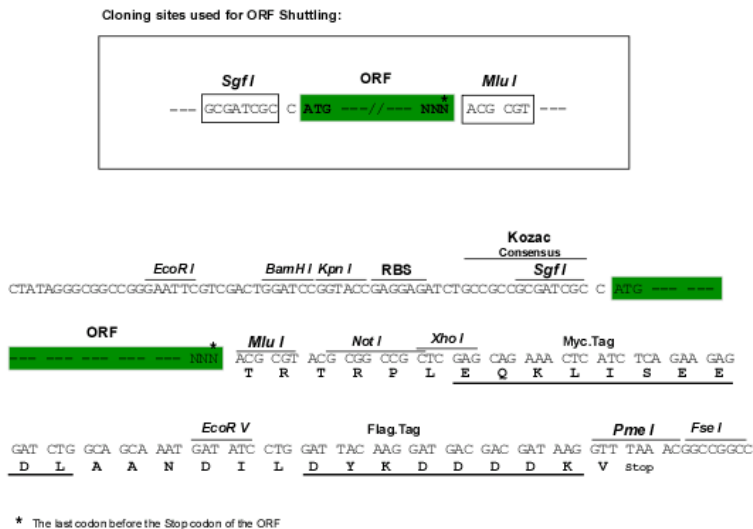
Chromatograms: https://cdn.origene.com/chromatograms/mk6234_b10.zip



[View online »](#)

Restriction Sites: SgfI-MluI

Cloning Scheme:



ACCN: NM_000945

ORF Size: 510 bp

OTI Disclaimer: The molecular sequence of this clone aligns with the gene accession number as a point of reference only. However, individual transcript sequences of the same gene can differ through naturally occurring variations (e.g. polymorphisms), each with its own valid existence. This clone is substantially in agreement with the reference, but a complete review of all prevailing variants is recommended prior to use. [More info](#)

OTI Annotation: This clone was engineered to express the complete ORF with an expression tag. Expression varies depending on the nature of the gene.

Components: The ORF clone is ion-exchange column purified and shipped in a 2D barcoded Matrix tube containing 10ug of transfection-ready, dried plasmid DNA (reconstitute with 100 ul of water).

Reconstitution Method:

1. Centrifuge at 5,000xg for 5min.
2. Carefully open the tube and add 100ul of sterile water to dissolve the DNA.
3. Close the tube and incubate for 10 minutes at room temperature.
4. Briefly vortex the tube and then do a quick spin (less than 5000xg) to concentrate the liquid at the bottom.
5. Store the suspended plasmid at -20°C. The DNA is stable for at least one year from date of shipping when stored at -20°C.

Note: Plasmids are not sterile. For experiments where strict sterility is required, filtration with 0.22um filter is required.

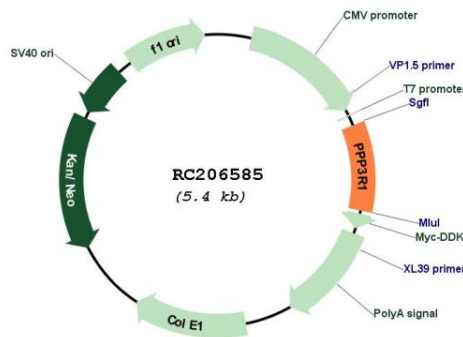
RefSeq: [NM_000945.4](#)

RefSeq Size: 3111 bp

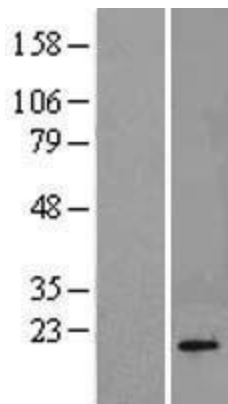
RefSeq ORF: 513 bp

Locus ID: 5534
UniProt ID: [P63098](#)
Cytogenetics: 2p14
Domains: EFh
Protein Families: Druggable Genome, Phosphatase
Protein Pathways: Alzheimer's disease, Amyotrophic lateral sclerosis (ALS), Apoptosis, Axon guidance, B cell receptor signaling pathway, Calcium signaling pathway, Long-term potentiation, MAPK signaling pathway, Natural killer cell mediated cytotoxicity, Oocyte meiosis, T cell receptor signaling pathway, VEGF signaling pathway, Wnt signaling pathway
MW: 19.3 kDa
Gene Summary: Regulatory subunit of calcineurin, a calcium-dependent, calmodulin stimulated protein phosphatase. Confers calcium sensitivity.[UniProtKB/Swiss-Prot Function]

Product images:



Circular map for RC206585



Western blot validation of overexpression lysate (Cat# [LY424440]) using anti-DDK antibody (Cat# [TA50011-100]). Left: Cell lysates from untransfected HEK293T cells; Right: Cell lysates from HEK293T cells transfected with RC206585 using transfection reagent MegaTran 2.0 (Cat# [TT210002]).