

Product datasheet for **RC206583**

MAPK11 (NM_002751) Human Tagged ORF Clone

Product data:

Product Type:	Expression Plasmids
Product Name:	MAPK11 (NM_002751) Human Tagged ORF Clone
Tag:	Myc-DDK
Symbol:	MAPK11
Synonyms:	p38-2; P38B; p38Beta; P38BETA2; PRKM11; SAPK2; SAPK2B
Mammalian Cell Selection:	Neomycin
Vector:	pCMV6-Entry (PS100001)
E. coli Selection:	Kanamycin (25 ug/mL)
ORF Nucleotide Sequence:	>RC206583 ORF sequence Red=Cloning site Blue=ORF Green=Tags(s)

TTTTGTAATACGACTCACTATAGGGCGGCCGGAATTCGTCGACTGGATCCGGTACCGAGGAGATCTGCC
GCC**CGATCGCC**

ATGTCGGGCCCTCGCGCCGGTCTACCGGCAGGAGCTGAACAAGACCGTGTGGGAGGTGCCGACGCGC
TGCAGGGGCTGCGCCCGGTGGGCTCCGGCGCCTACGGCTCCGTCTGTTCCGGCTACGACGCCCGGTGCG
CCAGAAGTGCGGTGAAGAAGTGTGCGGCCCTTCCAGTCGCTGATCCACGCGCGCAGAACGTACCGG
GAGCTGCGGCTGCTCAAGCACCTGAAGCACGAGAACGTCATCGGGCTTCTGGACGTCTTACGCGCCGCA
CGTCCATCGAGGACTTCAGCGAAGTGTACTTGGTGACCACCTGATGGGCGCCGACCTGAACAACATCGT
CAAGTGCCAGGCGCTGAGCGACGAGCACGTTCAATTCCTGGTTTACCAGCTGCTGCGCGGGCTGAAGTAC
ATCCACTCGGCCGGGATCATCCACCGGGACCTGAAGCCCAGCAACGTGGCTGTGAACGAGGACTGTGAGC
TCAGGATCCTGGATTTCCGGGCTGGCGCGCCAGGCGGACGAGGAGATGACCGGCTATGTGGCCACGCGCTG
GTACCGGGCACCTGAGATCATGCTCAACTGGATGCATTACAACCAACAGTGGATATCTGGTCCGTGGGC
TGCATCATGGCTGAGTGTCTCCAGGGCAAGGCCCTCTTCCCGGGAAGCGACTACATTGACCAGCTGAAGC
GCATCATGGAAGTGGTGGGCACACCCAGCCCTGAGGTTCTGGCAAAAATCTCCTCAGAACACGCCCGGAC
ATATATCCAGTCCCTGCCCCCATGCCCCAGAAGGACCTGAGCAGCATCTTCCGTGGAGCCAACCCCTGG
GCCATGACCTCCTTGGAAAGGATGCTGGTGTGGACAGTGACCAGAGGGTCAGTCAGCTGAGGCACTGG
CCCACGCTACTTCAGCCAGTACCACGACCCCGAGGATGAGCCAGAGGCCGAGCCATATGATGAGAGCGT
TGAGGCCAAGGAGCGCACGCTGGAGGAGTGAAGGAGCTCACTTACCAGGAAGTCTCAGCTTCAAGCCC
CCAGAGCCACCGAAGCCACCTGGCAGCCTGGAGATTGAGCAG

ACGCGTACGCGGCCGCTCGAGCAGAACTCATCTCAGAAGAGGATCTGGCAGCAATGATATCCTGGATT
ACAAGGATGACGACGATAAGGTTAA



[View online »](#)

Protein Sequence: >RC206583 protein sequence
Red=Cloning site Green=Tags(s)

MSGPRAGFYRQELNKTVWEVPQRLQGLRPVGSAYDARLRQKVAVKKLSRPFQSLIHARTYR
 ELRLKHLKHENVIGLLDVFTPATSIEDFSEVYLVTTLMGADLNNIVKCQALSDEHVQFLVYQLRGLKY
 IHSAGIIHRDLKPSNVAVNEDCELRILDFGLARQADEEMTYVATRWYRAPEIMLNWMHYNQTVDIWSVG
 CIMAELLQGKALFPGSDYIDQLKRIMEVVGTPSPEVLAKISSEHARTYIQSLPPMPQKDLSSIFRGNPL
 AIDLLGRMLVLDSDQRVSAEALAHAYFSQYHDPEDPEAEPEYDESVEAKERTLEEWKELTYQEVLSFKP
 PEPPKPPGSLEIEQ

TRTRPLEQKLISEEDLAANDILDYKDDDDKV

Chromatograms: https://cdn.origene.com/chromatograms/mk6015_b12.zip

Restriction Sites: SgfI-MluI

Cloning Scheme:



ACCN: NM_002751

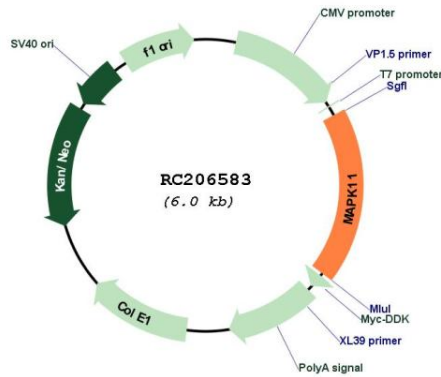
ORF Size: 1092 bp

OTI Disclaimer: Due to the inherent nature of this plasmid, standard methods to replicate additional amounts of DNA in E. coli are highly likely to result in mutations and/or rearrangements. Therefore, OriGene does not guarantee the capability to replicate this plasmid DNA. Additional amounts of DNA can be purchased from OriGene with batch-specific, full-sequence verification at a reduced cost. Please contact our customer care team at custsupport@origene.com or by calling 301.340.3188 option 3 for pricing and delivery.

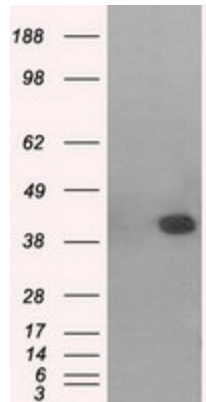
The molecular sequence of this clone aligns with the gene accession number as a point of reference only. However, individual transcript sequences of the same gene can differ through naturally occurring variations (e.g. polymorphisms), each with its own valid existence. This clone is substantially in agreement with the reference, but a complete review of all prevailing variants is recommended prior to use. [More info](#)

OTI Annotation:	This clone was engineered to express the complete ORF with an expression tag. Expression varies depending on the nature of the gene.
Components:	The ORF clone is ion-exchange column purified and shipped in a 2D barcoded Matrix tube containing 10ug of transfection-ready, dried plasmid DNA (reconstitute with 100 ul of water).
Reconstitution Method:	<ol style="list-style-type: none">1. Centrifuge at 5,000xg for 5min.2. Carefully open the tube and add 100ul of sterile water to dissolve the DNA.3. Close the tube and incubate for 10 minutes at room temperature.4. Briefly vortex the tube and then do a quick spin (less than 5000xg) to concentrate the liquid at the bottom.5. Store the suspended plasmid at -20°C. The DNA is stable for at least one year from date of shipping when stored at -20°C.
Note:	Plasmids are not sterile. For experiments where strict sterility is required, filtration with 0.22um filter is required.
RefSeq:	NM_002751.6
RefSeq Size:	2463 bp
RefSeq ORF:	1095 bp
Locus ID:	5600
UniProt ID:	Q15759
Cytogenetics:	22q13.33
Protein Families:	Druggable Genome, Protein Kinase
Protein Pathways:	Amyotrophic lateral sclerosis (ALS), Epithelial cell signaling in Helicobacter pylori infection, Fc epsilon RI signaling pathway, GnRH signaling pathway, Leukocyte transendothelial migration, MAPK signaling pathway, Neurotrophin signaling pathway, NOD-like receptor signaling pathway, Progesterone-mediated oocyte maturation, RIG-I-like receptor signaling pathway, T cell receptor signaling pathway, Toll-like receptor signaling pathway, VEGF signaling pathway
MW:	41.4 kDa
Gene Summary:	This gene encodes a member of a family of protein kinases that are involved in the integration of biochemical signals for a wide variety of cellular processes, including cell proliferation, differentiation, transcriptional regulation, and development. The encoded protein can be activated by proinflammatory cytokines and environmental stresses through phosphorylation by mitogen activated protein kinase kinases (MKKs). Alternative splicing results in multiple transcript variants. [provided by RefSeq, Mar 2014]

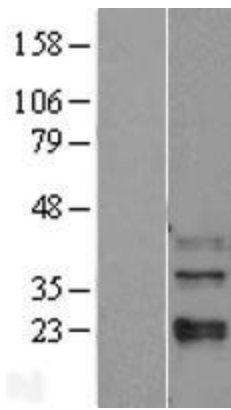
Product images:



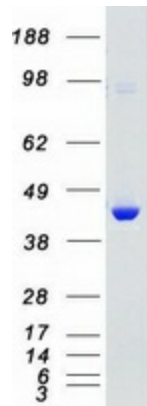
Circular map for RC206583



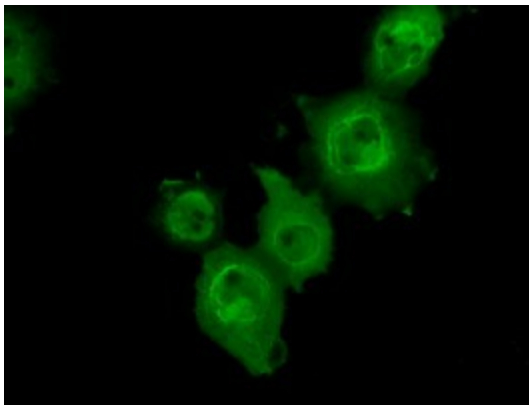
HEK293T cells were transfected with the pCMV6-ENTRY control (Cat# [PS100001], Left lane) or pCMV6-ENTRY MAPK11 (Cat# RC206583, Right lane) cDNA for 48 hrs and lysed. Equivalent amounts of cell lysates (5 ug per lane) were separated by SDS-PAGE and immunoblotted with anti-MAPK11 (Cat# [TA501085]). Positive lysates [LY400971] (100ug) and [LC400971] (20ug) can be purchased separately from OriGene.



Western blot validation of overexpression lysate (Cat# [LY400971]) using anti-DDK antibody (Cat# [TA50011-100]). Left: Cell lysates from untransfected HEK293T cells; Right: Cell lysates from HEK293T cells transfected with RC206583 using transfection reagent MegaTran 2.0 (Cat# [TT210002]).



Coomassie blue staining of purified MAPK11 protein (Cat# [TP306583]). The protein was produced from HEK293T cells transfected with MAPK11 cDNA clone (Cat# RC206583) using MegaTran 2.0 (Cat# [TT210002]).



Anti-MAPK11 mouse monoclonal antibody ([TA501085]) immunofluorescent staining of COS7 cells transiently transfected by pCMV6-ENTRY MAPK11 (RC206583).