

Product datasheet for **RC206578**

MDC (CCL22) (NM_002990) Human Tagged ORF Clone

Product data:

Product Type: Expression Plasmids
Product Name: MDC (CCL22) (NM_002990) Human Tagged ORF Clone
Tag: Myc-DDK
Symbol: CCL22
Synonyms: A-152E5.1; ABCD-1; DC/B-CK; MDC; SCYA22; STCP-1
Vector: pCMV6-Entry (PS100001)
E. coli Selection: Kanamycin (25 ug/mL)
Cell Selection: Neomycin
ORF Nucleotide Sequence: >RC206578 ORF sequence
Red=Cloning site Blue=ORF Green=Tags(s)

TTTTGTAATACGACTCACTATAGGGCGCCGGAATTCGTCGACTGGATCCGGTACCGAGGAGATCTGCC
GCC**CGATCGCC**

ATGGCTCGCTACAGACTGCACTCCTGGTTGCTCCTCGTCCTCTGCTGTGGCGTTCAAGCAACTGAGG
CAGGCCCTACGGCGCCAACATGGAAGACAGCGTCTGCTGCCGTGATTACGTCCGTACCCTCTGCCCT
GCGCGTGGTAAACACTTCTACTGGACCTCAGACTCCTGCCCGAGGCCTGGCGTGGTGTGCTAACCTTC
AGGGATAAGGAGATCTGTCCGATCCCAGAGTGCCTGGGTGAAGATGATTCTCAATAAGCTGAGCCAA

ACGCGTACGCGGCCGCTCGAGCAGAAACTCATCTCAGAAGAGGATCTGGCAGCAAATGATATCCTGGATT
ACAAGGATGACGACGATAAGGTTTAA

Protein Sequence: >RC206578 protein sequence
Red=Cloning site Green=Tags(s)

MARLQTALLVVLVLLAVALQATEAGPYGANMEDSVCCRDYVRYRLPLRVVKHFYWTSDSCRPRGVLLTF
RDKEICADPRVPWVKMILNKLSQ

TRTRPLEQKLISEEDLAANDILDYKDDDDKV

Chromatograms: https://cdn.origene.com/chromatograms/mk6328_d11.zip

Restriction Sites: Sgfl-MluI

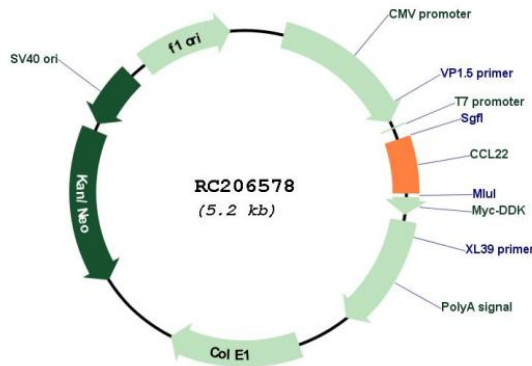


[View online »](#)

Cloning Scheme:



Plasmid Map:



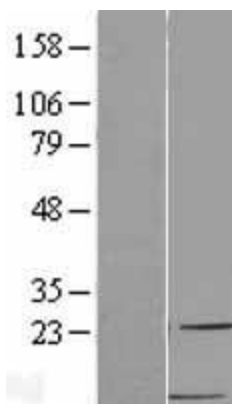
ACCN: NM_002990

ORF Size: 279 bp

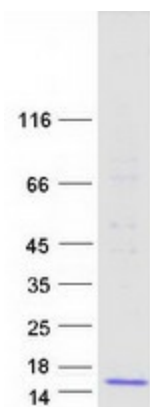
OTI Disclaimer: The molecular sequence of this clone aligns with the gene accession number as a point of reference only. However, individual transcript sequences of the same gene can differ through naturally occurring variations (e.g. polymorphisms), each with its own valid existence. This clone is substantially in agreement with the reference, but a complete review of all prevailing variants is recommended prior to use. [More info](#)

OTI Annotation:	This clone was engineered to express the complete ORF with an expression tag. Expression varies depending on the nature of the gene.
Components:	The ORF clone is ion-exchange column purified and shipped in a 2D barcoded Matrix tube containing 10ug of transfection-ready, dried plasmid DNA (reconstitute with 100 ul of water).
Reconstitution Method:	<ol style="list-style-type: none">1. Centrifuge at 5,000xg for 5min.2. Carefully open the tube and add 100ul of sterile water to dissolve the DNA.3. Close the tube and incubate for 10 minutes at room temperature.4. Briefly vortex the tube and then do a quick spin (less than 5000xg) to concentrate the liquid at the bottom.5. Store the suspended plasmid at -20°C. The DNA is stable for at least one year from date of shipping when stored at -20°C.
RefSeq:	<u>NM_002990.2</u>
RefSeq Size:	2933 bp
RefSeq ORF:	282 bp
Locus ID:	6367
UniProt ID:	<u>O00626</u>
Cytogenetics:	16q21
Protein Families:	Druggable Genome, Secreted Protein, Transmembrane
Protein Pathways:	Chemokine signaling pathway, Cytokine-cytokine receptor interaction
MW:	10.6 kDa
Gene Summary:	This antimicrobial gene is one of several Cys-Cys (CC) cytokine genes clustered on the q arm of chromosome 16. Cytokines are a family of secreted proteins involved in immunoregulatory and inflammatory processes. The CC cytokines are proteins characterized by two adjacent cysteines. The cytokine encoded by this gene displays chemotactic activity for monocytes, dendritic cells, natural killer cells and for chronically activated T lymphocytes. It also displays a mild activity for primary activated T lymphocytes and has no chemoattractant activity for neutrophils, eosinophils and resting T lymphocytes. The product of this gene binds to chemokine receptor CCR4. This chemokine may play a role in the trafficking of activated T lymphocytes to inflammatory sites and other aspects of activated T lymphocyte physiology. [provided by RefSeq, Sep 2014]

Product images:



Western blot validation of overexpression lysate (Cat# [LY418968]) using anti-DDK antibody (Cat# [TA50011-100]). Left: Cell lysates from untransfected HEK293T cells; Right: Cell lysates from HEK293T cells transfected with RC206578 using transfection reagent MegaTran 2.0 (Cat# [TT210002]).



Coomassie blue staining of purified CCL22 protein (Cat# [TP306578]). The protein was produced from HEK293T cells transfected with CCL22 cDNA clone (Cat# RC206578) using MegaTran 2.0 (Cat# [TT210002]).