

Product datasheet for **RC206575**

SLC22A4 (NM_003059) Human Tagged ORF Clone

Product data:

Product Type:	Expression Plasmids
Product Name:	SLC22A4 (NM_003059) Human Tagged ORF Clone
Tag:	Myc-DDK
Symbol:	SLC22A4
Synonyms:	DFNB60; OCTN1
Mammalian Cell Selection:	Neomycin
Vector:	pCMV6-Entry (PS100001)
E. coli Selection:	Kanamycin (25 ug/mL)



[View online »](#)

ORF Nucleotide Sequence:

>RC206575 representing NM_003059
 Red=Cloning site Blue=ORF Green=Tags(s)

TTTTGTAATACGACTCACTATAGGGCGGCCGGAATTCGTCGACTGGATCCGGTACCGAGGAGATCTGCC
 GCC**CGGATCGCC**

ATGCGGGACTACGACGAGGTGATCGCCTTCTGGGCGAGTGGGGCCCTCCAGCGCCTCATCTTCTTCC
 TGCTCAGCGCCAGCATCATCCCCAATGGCTTCAATGGTATGTCAGTCGTGTTCTGGCGGGACCCCGGA
 GCACCGCTGTCGAGTGCCGGACGCCGGAACCTGAGCAGCGCCTGGCGCAACAACAGTGTCCCGCTGCGG
 CTGCGGGACGGCCGCGAGGTGCCCCACAGCTGCAGCCGCTACCGCTCGCCACCATCGCCAACTTCTCGG
 CGCTCGGGCTGGAGCCGGGGCGGACGTGGACCTGGGCGAGTGGAGCAGGAGAGCTGCCTGGATGGCTG
 GGAGTTACGCCAGGACGTCTACCTGTCCACCGTCGTGACCGAGTGGAACTGGTGTGTGAGGACAACTGG
 AAGGTGCCCTCACACCTCCCTGTTCTCGTAGGCGTCTCTCGGCTCCTTCTGTCCGGCAGCTGT
 CAGACAGGTTTGGCAGGAAGAAGCTTCTTTCGAACCATGGCTGTACAGACTGGCTTCAGCTTCTGCA
 GATTTTCTCCATCAGCTGGGAGATGTTCACTGTGTTATTTGTCATCGTGGGCATGGCCAGATCTCCAAC
 TATGTGGTAGCCTTCATACTAGGAACAGAAATCTTGGCAAGTCAGTTCTGATTATATTCTACATTAG
 GAGTGTGCACATTTTTGCACTGGCTATATGCTGCTGCCACTGTTTGCTTACTTCATCAGAGACTGGCG
 GATGCTGCTGCTGGCGTGACGGTGCCGGGAGTGTGTGTGCCGCTGTGGTGGTTCACTTCTGAATCT
 CCCCAGTGGCTGATATCCCAGAGAAGATTTAGAGAGGCTGAAGATATCATCCAAAAGCTGCAAAAATGA
 ACAACATAGCTGTACCAGCAGTGATATTTGATTCTGTGGAGGAGCTAAATCCCCTGAAGCAGCAGAAAGC
 TTTCACTTGGACCTGTTCAAGACTCGGAATATTGCCATAATGACCATTATGTCTTTGCTGCTATGGATG
 CTGACCTCAGTGGTTACTTTGCTCTGTCTCTGGATGCTCCTAATTTACATGGAGATGCCTACCTGAAC
 GTTTCCTCTCTGCTTGAATGAAATCCAGCTTACATTACAGCCTGGCTGCTATTGCGAACCTGCCAG
 GGGTTATATCATAGCTGCAGTACTGTTCTGGGGAGGAGGTGCTCTTCTTCACTCAACTGGTACCTGTG
 GATTATTACTTCTATCCATTGGTCTGGTCTGCTGGGAAAATTTGGGATCACCTCTGCTTCTCCATGC
 TGTATGCTTCACTGCTGAGCTCTACCCAACCTGGTCAGGAACATGGCGGTGGGGTCCACATCCACGGC
 CTCCAGAGTGGGCAGCATATTGCCCTACTTTGTTTACCTCGGTGCTTACAACAGAATGCTGCCCTAC
 ATCGTCATGGGTAGTCTGACTGTCTGATTGGAATCCTCACCTTTTTTCCCTGAAAGTTGGGAATGA
 CTCTCCAGAACCTTAGAGCAGATGCAGAAAGTGAATGGTTCAGATCTGGGAAAAAACAGAGACTC
 AATGGAGACAGAAGAAAATCCCAAGTTCTAATAACTGCATTC

ACGCGTACGCGGCCGCTCGAGCAGAAACTCATCTCAGAAGAGGATCTGGCAGCAAATGATATCCTGGATT
 ACAAGGATGACGACGATAAGGTTTAA

Protein Sequence:

>RC206575 representing NM_003059
 Red=Cloning site Green=Tags(s)

MRDYDEVI AFLGEWPFQRLIFFLLSASIIPNGFNMSVVF LAGTPEHRCRVPDAANLSSAWRNN SVPLR
 LRDGREVPHSCSRYLATIANF SALGLEPGRD VDLGQLEQESCLDGEF SQDVYLSTVVTEWNLV CEDNW
 KVPLTTS LFFVGVLLGSFV SGLSDRFGRKNVLFATMAVQTGFSFLQIFSI SWEMFTVLFVIVGMGQISN
 YVVAFILGTEILGKSVRIIFSTLGVCTFFAVGYMLLPLFAYFIRDWRMLLLAL TVPGVLCVPLWWFIPES
 PRWLISQRRFREAE DIIQKA AKMNNI AVPAVIFDSVEELNPLKQKAFILD LFRTRNIAIMTMSLLLWM
 LTVSGYFALS LDAPNLHGDAYLNCFLSALIEIPAYITAWLLRLPRRYIIAAVLFWGGGVLLFIQLVPV
 DYYFLSIGLVMLGKFGITSAFSMLYVFTAELYPTLVRNMAVGVTASRVGSI IAPYFVYL GAYNRMLPY
 IVMGSLTVLIGILTLFFPESLGM LPELQMQKVKWFRSGKKTRDSMETEENPKVLITAF

TRTRPLEQKLI SEEDLAANDILDYKDDDDKV

Chromatograms:

https://cdn.origene.com/chromatograms/mg2602_h07.zip

Restriction Sites:

Sgfl-MluI

Cloning Scheme:



ACCN: NM_003059

ORF Size: 1653 bp

OTI Disclaimer: Due to the inherent nature of this plasmid, standard methods to replicate additional amounts of DNA in E. coli are highly likely to result in mutations and/or rearrangements. Therefore, OriGene does not guarantee the capability to replicate this plasmid DNA. Additional amounts of DNA can be purchased from OriGene with batch-specific, full-sequence verification at a reduced cost. Please contact our customer care team at custsupport@origene.com or by calling 301.340.3188 option 3 for pricing and delivery.

The molecular sequence of this clone aligns with the gene accession number as a point of reference only. However, individual transcript sequences of the same gene can differ through naturally occurring variations (e.g. polymorphisms), each with its own valid existence. This clone is substantially in agreement with the reference, but a complete review of all prevailing variants is recommended prior to use. [More info](#)

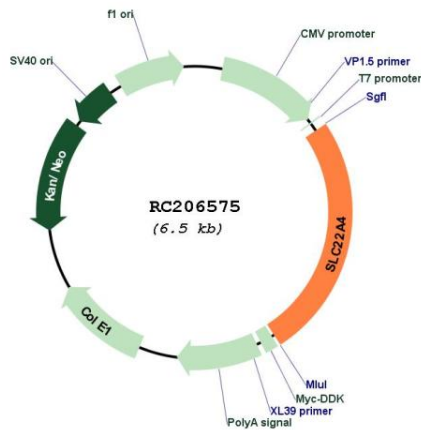
OTI Annotation: This clone was engineered to express the complete ORF with an expression tag. Expression varies depending on the nature of the gene.

Components: The ORF clone is ion-exchange column purified and shipped in a 2D barcoded Matrix tube containing 10ug of transfection-ready, dried plasmid DNA (reconstitute with 100 ul of water).

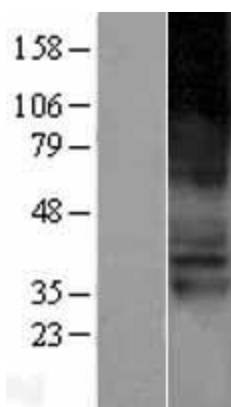
- Reconstitution Method:
1. Centrifuge at 5,000xg for 5min.
 2. Carefully open the tube and add 100ul of sterile water to dissolve the DNA.
 3. Close the tube and incubate for 10 minutes at room temperature.
 4. Briefly vortex the tube and then do a quick spin (less than 5000xg) to concentrate the liquid at the bottom.
 5. Store the suspended plasmid at -20°C. The DNA is stable for at least one year from date of shipping when stored at -20°C.

Note:	Plasmids are not sterile. For experiments where strict sterility is required, filtration with 0.22um filter is required.
RefSeq:	<u>NM_003059.3</u>
RefSeq Size:	2214 bp
RefSeq ORF:	1656 bp
Locus ID:	6583
UniProt ID:	<u>Q9H015</u>
Cytogenetics:	5q31.1
Domains:	sugar_tr
Protein Families:	Transmembrane
MW:	62 kDa
Gene Summary:	Polyspecific organic cation transporters in the liver, kidney, intestine, and other organs are critical for elimination of many endogenous small organic cations as well as a wide array of drugs and environmental toxins. The encoded protein is an organic cation transporter and plasma integral membrane protein containing eleven putative transmembrane domains as well as a nucleotide-binding site motif. Transport by this protein is at least partially ATP-dependent. [provided by RefSeq, Jul 2008]

Product images:



Circular map for RC206575



Western blot validation of overexpression lysate (Cat# [LY401067]) using anti-DDK antibody (Cat# [TA50011-100]). Left: Cell lysates from untransfected HEK293T cells; Right: Cell lysates from HEK293T cells transfected with RC206575 using transfection reagent MegaTran 2.0 (Cat# [TT210002]).