

## Product datasheet for RC206570

### TCF21 (NM\_003206) Human Tagged ORF Clone

#### Product data:

**Product Type:** Expression Plasmids  
**Product Name:** TCF21 (NM\_003206) Human Tagged ORF Clone  
**Tag:** Myc-DDK  
**Symbol:** TCF21  
**Synonyms:** bHLHa23; POD1  
**Vector:** pCMV6-Entry (PS100001)  
**E. coli Selection:** Kanamycin (25 ug/mL)  
**Cell Selection:** Neomycin  
**ORF Nucleotide Sequence:** >RC206570 ORF sequence  
Red=Cloning site Blue=ORF Green=Tags(s)

TTTTGTAATACGACTCACTATAGGGCGCCGGAATTCGTCGACTGGATCCGGTACCGAGGAGATCTGCC  
GCC**CGATCGCC**

ATGTCCACCGCTCCCTCAGCGATGTGGAGGACCTTCAAGAGGTGGAGATGTTGGAATGTGACGGGTTGA  
AAATGGATTGAACAAGGAATTTGTGACTTCCAACGAGAGCACCGAGGAGAGCTCCAAGTGCAGAAATGG  
GTCTCCCCAGAAGGGCCGCGCGCCTGGCAAGAGGAGGAAGGGCCCAAGAAGAGCCCCCTGAGC  
GGGTCAGCCAGGAGGGGAAGCAGGTCCAGCGCAACGCCGCAACGCGCGAGAGCGGGCCCGATGCGAG  
TGCTGAGCAAGGCCTTCTCCAGACTCAAGACCACCTGCCTGGGTGCCCCCGACCAAGCTCTCCAA  
GCTGGACACGCTCAGGCTGGCGTCCAGTACATCGCCACTTGAGGCAGATCCTGGCTAACGACAAATAC  
GAGAACGGGTACATTACCCCGTCAACCTGACGTGGCCCTTTATGGTGGCCGGGAAACCCGAGAGTGACC  
TGAAAGAAGTGGTGACCGCGAGCCGCTTATGTGGAACCACCGCTCC

**ACGCGT**ACGCGGCGCTCGAGCAGAACTCATCTCAGAAGAGGATCTGGCAGCAATGATATCCTGGATT  
ACAAGGATGACGACGATAAGGTTTAA

**Protein Sequence:** >RC206570 protein sequence  
Red=Cloning site Green=Tags(s)

MSTGSLSDVEDLQEVEMLECDGLKMSNKEFVTSNESTEESNCENGSPQKGRGGLGKRRKAPT KKSPLS  
GVSQEGKQVQRNAANARERARMVLSKAF SRLKTTLPWVPPDTKLSKLDLRLASSYIAHLRQILANDKY  
ENGYIHPVNLTPFMVAGKPESDLKEVVTASRLCGTTAS

**TR**TRPLEQKLISEEDLAANDILDYKDDDDKV

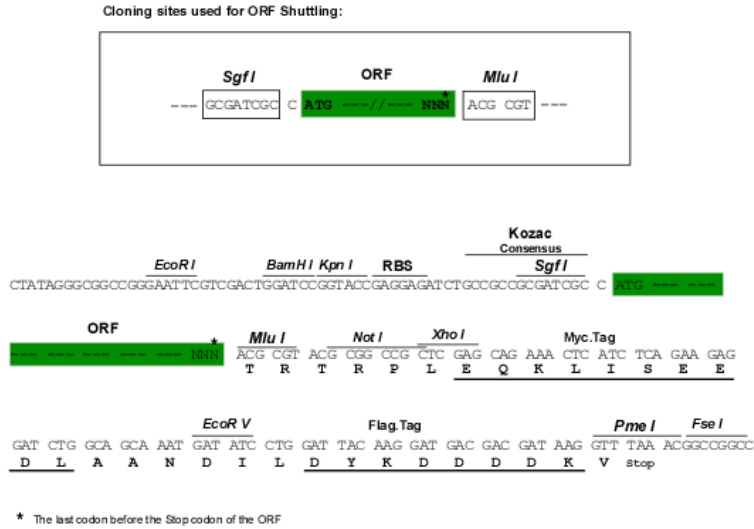
**Chromatograms:** [https://cdn.origene.com/chromatograms/mk6327\\_b12.zip](https://cdn.origene.com/chromatograms/mk6327_b12.zip)



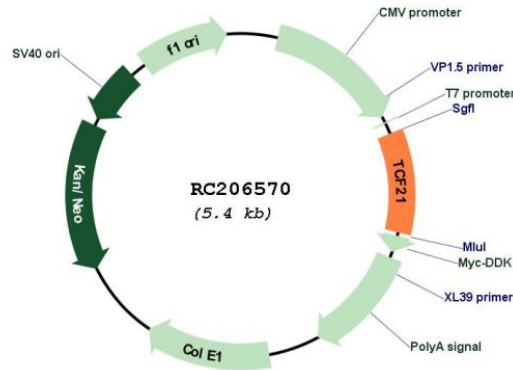
[View online »](#)

Restriction Sites: SgfI-MluI

Cloning Scheme:



Plasmid Map:



ACCN: NM\_003206

ORF Size: 537 bp

OTI Disclaimer: The molecular sequence of this clone aligns with the gene accession number as a point of reference only. However, individual transcript sequences of the same gene can differ through naturally occurring variations (e.g. polymorphisms), each with its own valid existence. This clone is substantially in agreement with the reference, but a complete review of all prevailing variants is recommended prior to use. [More info](#)

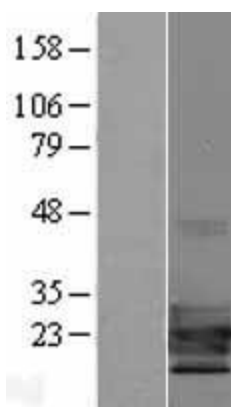
OTI Annotation: This clone was engineered to express the complete ORF with an expression tag. Expression varies depending on the nature of the gene.

RefSeq: [NM\\_003206.4](#)

RefSeq Size:	1285 bp
RefSeq ORF:	540 bp
Locus ID:	6943
Domains:	HLH
Protein Families:	Druggable Genome, Transcription Factors
MW:	19.7 kDa

**Gene Summary:** TCF21 encodes a transcription factor of the basic helix-loop-helix family. The TCF21 product is mesoderm specific, and expressed in embryonic epicardium, mesenchyme-derived tissues of lung, gut, gonad, and both mesenchymal and glomerular epithelial cells in the kidney. Two transcript variants encoding the same protein have been found for this gene. [provided by RefSeq, Jul 2008]

### Product images:



Western blot validation of overexpression lysate (Cat# [LY405044]) using anti-DDK antibody (Cat# [TA50011-100]). Left: Cell lysates from untransfected HEK293T cells; Right: Cell lysates from HEK293T cells transfected with [RC220002] using transfection reagent MegaTran 2.0 (Cat# [TT210002]).