

Product datasheet for RC206565

ARSB (NM_198709) Human Tagged ORF Clone

Product data:

Product Type:	Expression Plasmids
Product Name:	ARSB (NM_198709) Human Tagged ORF Clone
Tag:	Myc-DDK
Symbol:	ARSB
Synonyms:	ASB; G4S; MPS6
Mammalian Cell Selection:	Neomycin
Vector:	pCMV6-Entry (PS100001)
E. coli Selection:	Kanamycin (25 ug/mL)
ORF Nucleotide Sequence:	>RC206565 ORF sequence Red=Cloning site Blue=ORF Green=Tags(s)

TTTTGTAATACGACTCACTATAGGGCGGCCGGAATTCGTCGACTGGATCCGGTACCGAGGAGATCTGCC
GCC**CGATCGCC**

ATGGGTCCGCGGGCGGGCGAGCTTGCCCCGAGGCCCGGACCTCGGCGGCTGCTCCTCCCCGTGCTCC
TCCCGTGTGCTGTGCTGTTGTTGGCGCCGGGGCTCGGGCGCCGGGGCCAGCCGGCCGCCACCT
GGTCTTCTTGTGGCAGACGACCTAGGCTGGAACGACGTCGGCTTCCACGGCTCCCGCATCCGCACGCC
CACCTGGACGCGCTGGCGCCGGGGTCTCCTGGACAACACTACACGCAGCCGCTGTGCACGCCGT
CGCGGAGCCAGCTGCTCACTGGCCGCTACCAGATCCGTACAGTTTACAGCACCATAAATCTGGCCCTG
TCAGCCAGCTGTGTTCTCTGGATGAAAACTCTGCCAGCTCCTAAAAGAAGCAGGTTATACTACC
CATATGGTCGGAAAATGGCACCTGGGAATGTACCGAAAAGAAATGCCTTCCAACCCGCCGAGGATTTGATA
CCTACTTTGGATATCTCCTGGGTAGTGAAGATTATTATCCCATGAACGCTGTACATTAATTGACGCTCT
GAATGTACACGATGTGCTCTTGATTTTCGAGATGGCGAAGAAGTTGCAACAGGATATAAAAAATATGAT
TCAACAAACATATTCACCAAAAGGGCTATAGCCCTCATAACTAACCATCCACCAGAGAAGCCTCTGTTTC
TCTACCTTGCTCTCCAGTCTGTGCATGAGCCCCCTCAGGTCCTGAGGAATACTGAAGCCATATGACTT
TATCCAAGACAAGAACAGGCATCACTATGCAGGAATGGTGTCCCTTATGGATGAAGCAGTAGGAAATGTC
ACTGCAGCTTTAAAAAGCAGTGGCTCTGGAACAACCGGTGTTTCATCTTTCTACAGATAACGGAGGGC
AGACTTTGGCAGGGGTAACTGCCCCCTCGAGGAAGAAAATGGAGCCTGTGGGAAGGAGCCGTCGG
AGGGGTGGGCTTTGTGGCAAGCCCTTGTGAAGCAGAAGGGCGTGAAGAACCAGGAGCTCATCCACATC
TCTGACTGGCTGCCAACACTCGTGAAGCTGGCCAGGGGACACCAATGGCACAAGCCTCTGGATGGCT
TCGACGTGTGAAAACCATCAGTGAAGGAAGCCCATCCCCAGAATTGAGCTGCTGCATAATATTGACCC
GAACTTCGTGGACTCTTACCCTACTGGCTGAGTGTGCTGCTGTTG

ACGGTACGGCGCCGCTCGAGCAGAACTCATCTCAGAAGAGGATCTGGCAGCAAATGATATCCTGGATT
ACAAGGATGACGACGATAAGGTTTAA



Protein Sequence: >RC206565 protein sequence
Red=Cloning site Green=Tags(s)

MGPRGAASLPRGPGPRLLLLPVVLPLLLLLLAPPGSGAGASRPHLVFLLADDLGWNDVGFHGSIRTP
 HLDALAAGVLLDNYTQPLCTPSRSQLLTGRYQIRTGLQHQIIWPCQPSVPLDEKLLPQLKEAGYTT
 HMYGKWHLGMRYKECLPTRRGFDTYFGYLLGSEDIYSHERCTLIDALNVTRCALDFRDGEEVATGYKNMY
 STNIFTKRAIALITNHPPEKPLFLYLALQSVHEPLQVPEEYLKPYDFIQDKNRHHYAGMVSLMDEAVGNV
 TAALKSSGLWNNTVVFIFSTDNGGQTLAGGNWPLRGRKWSLWEGGVRGVGFVASPLLKQKGVKNRELIHI
 SDWLPTLVKLARGHTNGTKPLDGFVWKTISEGSPSPRIELLHNIDPNFVDDSSPYWPECSLLL

TRTRPLEQKLISEEDLAANDILDYKDDDDKV

Chromatograms: https://cdn.origene.com/chromatograms/mk6750_b09.zip

Restriction Sites: SgfI-MluI

Cloning Scheme:



* The last codon before the Stop codon of the ORF

ACCN: NM_198709

ORF Size: 1239 bp

OTI Disclaimer: The molecular sequence of this clone aligns with the gene accession number as a point of reference only. However, individual transcript sequences of the same gene can differ through naturally occurring variations (e.g. polymorphisms), each with its own valid existence. This clone is substantially in agreement with the reference, but a complete review of all prevailing variants is recommended prior to use. [More info](#)

OTI Annotation: This clone was engineered to express the complete ORF with an expression tag. Expression varies depending on the nature of the gene.

Components: The ORF clone is ion-exchange column purified and shipped in a 2D barcoded Matrix tube containing 10ug of transfection-ready, dried plasmid DNA (reconstitute with 100 ul of water).

Reconstitution Method:

1. Centrifuge at 5,000xg for 5min.
2. Carefully open the tube and add 100ul of sterile water to dissolve the DNA.
3. Close the tube and incubate for 10 minutes at room temperature.
4. Briefly vortex the tube and then do a quick spin (less than 5000xg) to concentrate the liquid at the bottom.
5. Store the suspended plasmid at -20°C. The DNA is stable for at least one year from date of shipping when stored at -20°C.

Note: Plasmids are not sterile. For experiments where strict sterility is required, filtration with 0.22um filter is required.

RefSeq: [NM_198709.3](#)

RefSeq Size: 2172 bp

RefSeq ORF: 1242 bp

Locus ID: 411

UniProt ID: [P15848](#)

Cytogenetics: 5q14.1

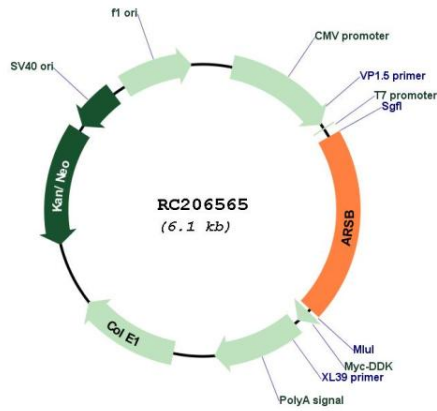
Protein Families: Druggable Genome

Protein Pathways: Glycosaminoglycan degradation, Lysosome, Metabolic pathways

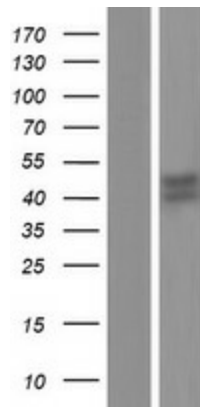
MW: 46 kDa

Gene Summary: Arylsulfatase B encoded by this gene belongs to the sulfatase family. The arylsulfatase B homodimer hydrolyzes sulfate groups of N-Acetyl-D-galactosamine, chondroitin sulfate, and dermatan sulfate. The protein is targeted to the lysosome. Mucopolysaccharidosis type VI is an autosomal recessive lysosomal storage disorder resulting from a deficiency of arylsulfatase B. Two alternatively spliced transcript variants encoding distinct isoforms have been found for this gene. [provided by RefSeq, Dec 2016]

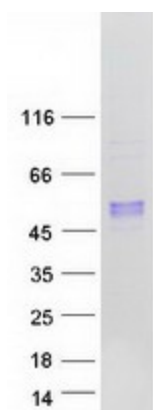
Product images:



Circular map for RC206565



Western blot validation of overexpression lysate (Cat# [LY404825]) using anti-DDK antibody (Cat# [TA50011-100]). Left: Cell lysates from untransfected HEK293T cells; Right: Cell lysates from HEK293T cells transfected with RC206565 using transfection reagent MegaTran 2.0 (Cat# [TT210002]).



Coomassie blue staining of purified ARSB protein (Cat# [TP306565]). The protein was produced from HEK293T cells transfected with ARSB cDNA clone (Cat# RC206565) using MegaTran 2.0 (Cat# [TT210002]).