

## Product datasheet for **RC206563**

### ATP4B (NM\_000705) Human Tagged ORF Clone

#### Product data:

Product Type:	Expression Plasmids
Product Name:	ATP4B (NM_000705) Human Tagged ORF Clone
Tag:	Myc-DDK
Symbol:	ATP4B
Synonyms:	ATP6B
Mammalian Cell Selection:	Neomycin
Vector:	pCMV6-Entry (PS100001)
E. coli Selection:	Kanamycin (25 ug/mL)
ORF Nucleotide Sequence:	>RC206563 ORF sequence Red=Cloning site Blue=ORF Green=Tags(s)

TTTTGTAATACGACTCACTATAGGGCGGCCGGAATTCGTCGACTGGATCCGGTACCGAGGAGATCTGCC  
GCC**CGATCGCC**

ATGGCGGCTCTGCAGGAGAAGAAGACGTGTGCCAGCGCATGGAGGAGTCCAGCGTTACTGCTGGAACC  
CGGACACGGGGCAGATGCTGGGCCGCACCCTGTCCGGTGGGTGTGGATCAGCCTGTACTACGTGGCCTT  
CTACGTGGTGATGACTGGGCTCTCGCCCTGTGCCTCTATGTGCTGATGCAGACAGTGGACCCGTACACA  
CCGGACTACCAAGACCAGCTACGGTCACCAGGGTAACCTTAAGGCCGGATGTTTACGGGGAGAAAGGCC  
TGGAAATTGTCTACAACGTCTCTGATAACAGAACCTGGGCAGACCTCACACAGACTCTCCACGCCTTCT  
AGCAGGCTACTCTCCAGCAGCCCAGGAGGACAGCATCAACTGCACCTCCGAGCAGTACTTCTCCAGGAG  
AGTTTCCGCGCTCCCAACCACACCAAGTTCTCCTGCAAGTTCACGGCAGATATGCTGCAGAACTGCTCAG  
GCCTGGCGGATCCCAACTTCGGCTTTGAAGAAGGAAAGCCATGTTTTATTATAAAATGAACAGGATCGT  
CAAGTTCTCCCCAGCAACGGCTCGGCCCCAGAGTGGACTGCGCCTTCTGGACCAGCCCCGCGAGCTC  
GGCCAGCCGCTGCAGGTCAAGTACTACCCTCCCAACGGCACCTTCAGTCTGCACTACTTCCCTTATTACG  
GGAAGAAAGCCCAGCCCCACTACAGCAACCCCTGGTGGCAGCGAAGCTCCTCAACATCCCCAGGAACGC  
TGAGGTCGCCATCGTGTCAAGGTCATGGCAGAGCACGTGACCTTCAACAATCCCCACGACCCGTATGAA  
GGGAAAGTGGAGTTCAAACCTCAAGATTGAGAAG

**ACGCGT**ACGCGGCCGCTCGAGCAGAAACTCATCTCAGAAGAGGATCTGGCAGCAAATGATATCCTGGATT  
ACAAGGATGACGACGATAAGGTTTAA



[View online »](#)

**Protein Sequence:** >RC206563 protein sequence  
Red=Cloning site Green=Tags(s)

MAALQEKKTCGQRMEEFQRYCWNPDGQMLGRTLRSRWWISLYYVAFYVMTGLFALCLYVLMQTVDPYT  
 PDYQDQLRSPGVTLRPDVYGEKLEIVYVSDNRTWADLTQTLHAFLAGYSPAQEDSINCTSEQYFFQE  
 SFRAPNHTKFSCKFTADMLQNCGLADPNFGFEEGKPCFIIKMNRIKFLPSNGSAPRVDCAFLDQPREL  
 GQPLQVKYYPNGTFFSLHYFPYYGKKAQPHYSNPLVAAKLLNIPRNEVAIVCKVMAEHVTFNPNHPDPE  
 GKVEFKLKIEK

TRTRPLEQKLISEEDLAANDILDYKDDDDKV

**Chromatograms:** [https://cdn.origene.com/chromatograms/mk6017\\_d02.zip](https://cdn.origene.com/chromatograms/mk6017_d02.zip)

**Restriction Sites:** SgfI-MluI

**Cloning Scheme:**



**ACCN:** NM\_000705

**ORF Size:** 873 bp

**OTI Disclaimer:** The molecular sequence of this clone aligns with the gene accession number as a point of reference only. However, individual transcript sequences of the same gene can differ through naturally occurring variations (e.g. polymorphisms), each with its own valid existence. This clone is substantially in agreement with the reference, but a complete review of all prevailing variants is recommended prior to use. [More info](#)

**OTI Annotation:** This clone was engineered to express the complete ORF with an expression tag. Expression varies depending on the nature of the gene.

**Components:** The ORF clone is ion-exchange column purified and shipped in a 2D barcoded Matrix tube containing 10ug of transfection-ready, dried plasmid DNA (reconstitute with 100 ul of water).

**Reconstitution Method:**

1. Centrifuge at 5,000xg for 5min.
2. Carefully open the tube and add 100ul of sterile water to dissolve the DNA.
3. Close the tube and incubate for 10 minutes at room temperature.
4. Briefly vortex the tube and then do a quick spin (less than 5000xg) to concentrate the liquid at the bottom.
5. Store the suspended plasmid at -20°C. The DNA is stable for at least one year from date of shipping when stored at -20°C.

**Note:** Plasmids are not sterile. For experiments where strict sterility is required, filtration with 0.22um filter is required.

**RefSeq:** [NM\\_000705.1](#)

**RefSeq Size:** 1509 bp

**RefSeq ORF:** 876 bp

**Locus ID:** 496

**UniProt ID:** [P51164](#)

**Cytogenetics:** 13q34

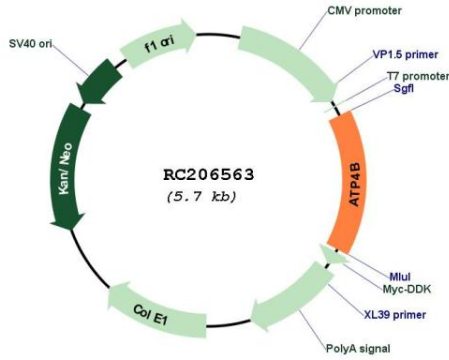
**Protein Families:** Druggable Genome, Transmembrane

**Protein Pathways:** Oxidative phosphorylation

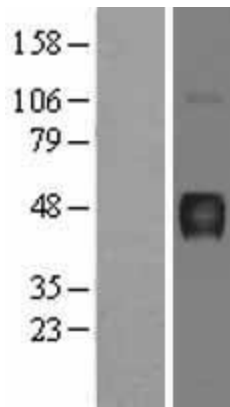
**MW:** 33.4 kDa

**Gene Summary:** The protein encoded by this gene belongs to a family of P-type cation-transporting ATPases. The gastric H<sup>+</sup>, K<sup>+</sup>-ATPase is a heterodimer consisting of a high molecular weight catalytic alpha subunit and a smaller but heavily glycosylated beta subunit. This enzyme is a proton pump that catalyzes the hydrolysis of ATP coupled with the exchange of H<sup>(+)</sup> and K<sup>(+)</sup> ions across the plasma membrane. It is also responsible for gastric acid secretion. This gene encodes the beta subunit of the gastric H<sup>+</sup>, K<sup>+</sup>-ATPase. [provided by RefSeq, Jul 2008]

Product images:



Circular map for RC206563



Western blot validation of overexpression lysate (Cat# [LY400236]) using anti-DDK antibody (Cat# [TA50011-100]). Left: Cell lysates from untransfected HEK293T cells; Right: Cell lysates from HEK293T cells transfected with RC206563 using transfection reagent MegaTran 2.0 (Cat# [TT210002]).