

Product datasheet for **RC206559L4V**

SLC26A3 (NM_000111) Human Tagged ORF Clone Lentiviral Particle

Product data:

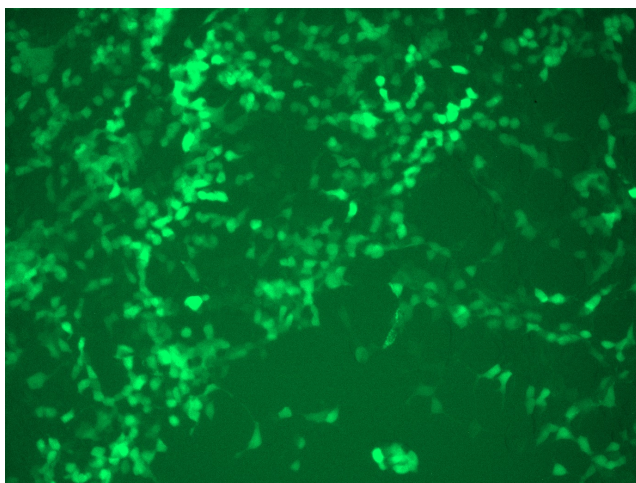
Product Type:	Lentiviral Particles
Product Name:	SLC26A3 (NM_000111) Human Tagged ORF Clone Lentiviral Particle
Symbol:	SLC26A3
Synonyms:	CLD; DRA
Mammalian Cell Selection:	Puromycin
Vector:	pLenti-C-mGFP-P2A-Puro (PS100093)
Tag:	mGFP
ACCN:	NM_000111
ORF Size:	2292 bp
ORF Nucleotide Sequence:	The ORF insert of this clone is exactly the same as(RC206559).
OTI Disclaimer:	The molecular sequence of this clone aligns with the gene accession number as a point of reference only. However, individual transcript sequences of the same gene can differ through naturally occurring variations (e.g. polymorphisms), each with its own valid existence. This clone is substantially in agreement with the reference, but a complete review of all prevailing variants is recommended prior to use. More info
OTI Annotation:	This clone was engineered to express the complete ORF with an expression tag. Expression varies depending on the nature of the gene.
RefSeq:	NM_000111.1 , NP_000102.1
RefSeq Size:	2894 bp
RefSeq ORF:	2295 bp
Locus ID:	1811
UniProt ID:	P40879
Cytogenetics:	7q22.3-q31.1
Protein Families:	Druggable Genome, Transcription Factors, Transmembrane
MW:	84.5 kDa



[View online »](#)

Gene Summary:

The protein encoded by this gene is a transmembrane glycoprotein that transports chloride ions across the cell membrane in exchange for bicarbonate ions. It is localized to the mucosa of the lower intestinal tract, particularly to the apical membrane of columnar epithelium and some goblet cells. The protein is essential for intestinal chloride absorption, and mutations in this gene have been associated with congenital chloride diarrhea. [provided by RefSeq, Oct 2008]

Product images:

[RC206559L4] was used to prepare Lentiviral particles using [TR30037] packaging kit. HEK293T cells were transduced with RC206559L4V particle to overexpress human SLC26A3-mGFP fusion protein.