

Product datasheet for **RC206555**

NDP (NM_000266) Human Tagged ORF Clone

Product data:

Product Type: Expression Plasmids
Product Name: NDP (NM_000266) Human Tagged ORF Clone
Tag: Myc-DDK
Symbol: NDP
Synonyms: EVR2; FEVR; ND
Mammalian Cell Selection: Neomycin
Vector: pCMV6-Entry (PS100001)
E. coli Selection: Kanamycin (25 ug/mL)
ORF Nucleotide Sequence: >RC206555 ORF sequence
 Red=Cloning site Blue=ORF Green=Tags(s)

TTTTGTAATACGACTCACTATAGGGCGGCCGGAATTCGTCGACTGGATCCGGTACCGAGGAGATCTGCC
 GCC**CGATCGCC**

ATGAGAAAACATGTACTAGCTGCATCCTTTTCTATGCTCTCCCTGCTGGTGATAATGGGAGATACAGACA
 GTAAAACGGACAGCTCATTATAATGGACTCGGACCCCGACGCTGCATGAGGCACCACTATGTGGATTC
 TATCAGTCACCCATTGTACAAGGTAGCTCAAAGATGGTCTCCTGGCCAGGTGCGAGGGGCACTGCAGC
 CAGGCGTCAGCTCCGAGCCTTTGGTGTCTGTCAGCACTGTCTCAAGCAACCCTCCGTTCTCTCTGTC
 ACTGCTGCCGGCCCCAGACTTCCAAGCTGAAGGCACTGCGGCTGCGATGCTCAGGGGCACTGCGACTCAC
 TGCCACCTACCGGTACATCTCTCTGTCAGTGGAGGAATGCAATTCC

ACGCGTACGCGGCCGCTCGAGCAGAAACTCATCTCAGAAGAGGATCTGGCAGCAAATGATATCCTGGATT
 ACAAGGATGACGACGATAAGGTTTAA

Protein Sequence: >RC206555 protein sequence
 Red=Cloning site Green=Tags(s)

MRKHVLAASFMSLLVIMGDTDSKTDSSFIMSDPRRCMRHHYVDSISHPLYKCSSKMVLLARCEGHCS
 QASRSEPLVSFSTVLKQPFRRSSCHCRPQTSKLLALRLRCSGMRLTATYRYILSCHCEECNS

TRTRPLEQKLISEEDLAANDILDYKDDDDKV

Chromatograms: https://cdn.origene.com/chromatograms/mk6240_h06.zip

Restriction Sites: Sgfl-MluI



[View online »](#)

Cloning Scheme:


ACCN: NM_000266

ORF Size: 399 bp

OTI Disclaimer: Due to the inherent nature of this plasmid, standard methods to replicate additional amounts of DNA in E. coli are highly likely to result in mutations and/or rearrangements. Therefore, OriGene does not guarantee the capability to replicate this plasmid DNA. Additional amounts of DNA can be purchased from OriGene with batch-specific, full-sequence verification at a reduced cost. Please contact our customer care team at custsupport@origene.com or by calling 301.340.3188 option 3 for pricing and delivery.

The molecular sequence of this clone aligns with the gene accession number as a point of reference only. However, individual transcript sequences of the same gene can differ through naturally occurring variations (e.g. polymorphisms), each with its own valid existence. This clone is substantially in agreement with the reference, but a complete review of all prevailing variants is recommended prior to use. [More info](#)

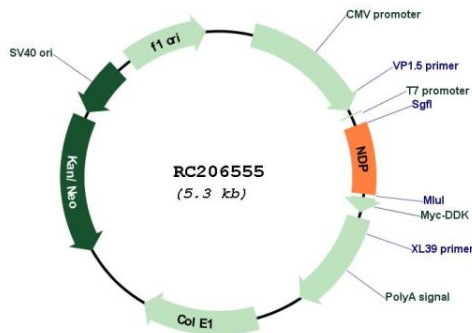
OTI Annotation: This clone was engineered to express the complete ORF with an expression tag. Expression varies depending on the nature of the gene.

Components: The ORF clone is ion-exchange column purified and shipped in a 2D barcoded Matrix tube containing 10ug of transfection-ready, dried plasmid DNA (reconstitute with 100 ul of water).

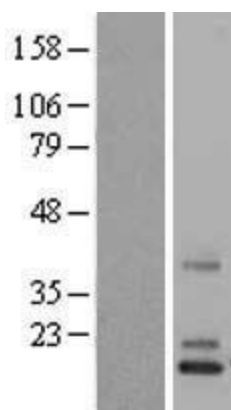
- Reconstitution Method:**
1. Centrifuge at 5,000xg for 5min.
 2. Carefully open the tube and add 100ul of sterile water to dissolve the DNA.
 3. Close the tube and incubate for 10 minutes at room temperature.
 4. Briefly vortex the tube and then do a quick spin (less than 5000xg) to concentrate the liquid at the bottom.
 5. Store the suspended plasmid at -20°C. The DNA is stable for at least one year from date of shipping when stored at -20°C.

RefSeq:	NM_000266.4
RefSeq Size:	2058 bp
RefSeq ORF:	402 bp
Locus ID:	4693
UniProt ID:	Q00604
Cytogenetics:	Xp11.3
Domains:	CT, Cys_knot
Protein Families:	Druggable Genome, Secreted Protein
MW:	15 kDa
Gene Summary:	This gene encodes a secreted protein with a cystein-knot motif that activates the Wnt/beta-catenin pathway. The protein forms disulfide-linked oligomers in the extracellular matrix. Mutations in this gene result in Norrie disease and X-linked exudative vitreoretinopathy. [provided by RefSeq, Feb 2009]

Product images:



Circular map for RC206555



Western blot validation of overexpression lysate (Cat# [LY424827]) using anti-DDK antibody (Cat# [TA50011-100]). Left: Cell lysates from untransfected HEK293T cells; Right: Cell lysates from HEK293T cells transfected with RC206555 using transfection reagent MegaTran 2.0 (Cat# [TT210002]).