

Product datasheet for **RC206552**

CART (CARTPT) (NM_004291) Human Tagged ORF Clone

Product data:

Product Type: Expression Plasmids
Product Name: CART (CARTPT) (NM_004291) Human Tagged ORF Clone
Tag: Myc-DDK
Symbol: CART
Synonyms: CART
Mammalian Cell Selection: Neomycin
Vector: pCMV6-Entry (PS100001)
E. coli Selection: Kanamycin (25 ug/mL)
ORF Nucleotide Sequence: >RC206552 ORF sequence
Red=Cloning site Blue=ORF Green=Tags(s)

TTTTGTAATACGACTCACTATAGGGCGCCGGGAATTCGTCGACTGGATCCGGTACCGAGGAGATCTGCC
GCC**CGATCGCC**

ATGGAGAGCTCCCGCTGAGGCTGCTGCCCTCCTGGGCGCCGCCCTGCTGCTGATGCTACCTCTGTTGG
GTACCCGTGCCAGGAGGACGCCGAGCTCCAGCCCGAGCCCTGGACATCTACTCTGCCGTGGATGATGC
CTCCCACGAGAAGGAGCTGATCGAAGCGCTGCAAGAAGTCTTGAAGAAGCTCAAGAGTAAACGTGTTCCC
ATCTATGAGAAGAAGTATGGCCAAGTCCCATGTGTGACGCCGGTGAGCAGTGTGCAGTGAGGAAAGGGG
CAAGGATCGGGAAGCTGTGTACTGTCCCCGAGGAACCTCTGCAATTCCTCCTCTGAAGTGCTTA

ACGCGTACGCGGCCGCTCGAGCAGAAACTCATCTCAGAAGAGGATCTGGCAGCAAATGATATCCTGGATT
ACAAGGATGACGACGATAAGGTTTAA

Protein Sequence: >RC206552 protein sequence
Red=Cloning site Green=Tags(s)
MESSRVLLPLLGAALLMLPLLGTRAQEDAELQPRALDIYSAVDDASHEKELIEALQEVLLKLLKSKRVP
IYEKYGQVPMCDAGEQCAVRKGARIGKLCDCPRGTSCNSFLLKCL

TRTRPLEQKLISEEDLAANDILDYKDDDDKV

Chromatograms: https://cdn.origene.com/chromatograms/mk6330_h03.zip

Restriction Sites: SgfI-MluI



[View online »](#)

Cloning Scheme:


ACCN: NM_004291

ORF Size: 348 bp

OTI Disclaimer: The molecular sequence of this clone aligns with the gene accession number as a point of reference only. However, individual transcript sequences of the same gene can differ through naturally occurring variations (e.g. polymorphisms), each with its own valid existence. This clone is substantially in agreement with the reference, but a complete review of all prevailing variants is recommended prior to use. [More info](#)

OTI Annotation: This clone was engineered to express the complete ORF with an expression tag. Expression varies depending on the nature of the gene.

Components: The ORF clone is ion-exchange column purified and shipped in a 2D barcoded Matrix tube containing 10ug of transfection-ready, dried plasmid DNA (reconstitute with 100 ul of water).

Reconstitution Method:

1. Centrifuge at 5,000xg for 5min.
2. Carefully open the tube and add 100ul of sterile water to dissolve the DNA.
3. Close the tube and incubate for 10 minutes at room temperature.
4. Briefly vortex the tube and then do a quick spin (less than 5000xg) to concentrate the liquid at the bottom.
5. Store the suspended plasmid at -20°C. The DNA is stable for at least one year from date of shipping when stored at -20°C.

RefSeq: [NM_004291.4](#)

RefSeq Size: 933 bp

RefSeq ORF: 351 bp

Locus ID: 9607

UniProt ID: [Q16568](#)

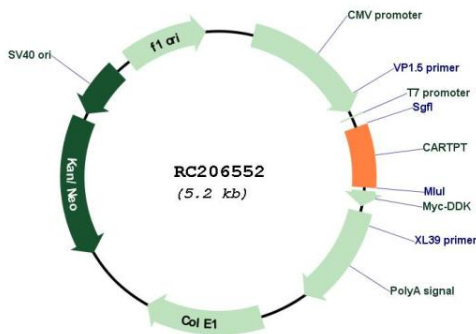
Cytogenetics: 5q13.2

Protein Families: Secreted Protein

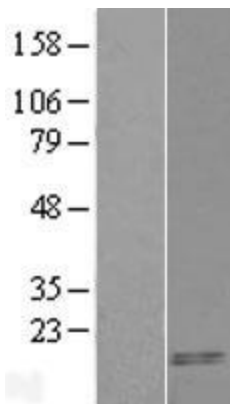
MW: 12.8 kDa

Gene Summary: This gene encodes a preproprotein that is proteolytically processed to generate multiple biologically active peptides. These peptides play a role in appetite, energy balance, maintenance of body weight, reward and addiction, and the stress response. Expression of a similar gene transcript in rodents is upregulated following administration of cocaine and amphetamine. Mutations in this gene are associated with susceptibility to obesity in humans. [provided by RefSeq, Feb 2016]

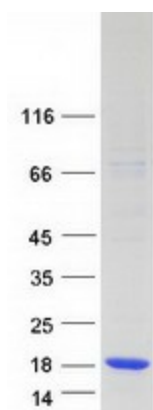
Product images:



Circular map for RC206552



Western blot validation of overexpression lysate (Cat# [LY418081]) using anti-DDK antibody (Cat# [TA50011-100]). Left: Cell lysates from untransfected HEK293T cells; Right: Cell lysates from HEK293T cells transfected with RC206552 using transfection reagent MegaTran 2.0 (Cat# [TT210002]).



Coomassie blue staining of purified CARTPT protein (Cat# [TP306552]). The protein was produced from HEK293T cells transfected with CARTPT cDNA clone (Cat# RC206552) using MegaTran 2.0 (Cat# [TT210002]).