

Product datasheet for RC206549

VEGFD (NM_004469) Human Tagged ORF Clone

Product data:

Product Type:	Expression Plasmids
Product Name:	VEGFD (NM_004469) Human Tagged ORF Clone
Tag:	Myc-DDK
Symbol:	VEGFD
Synonyms:	FIGF; VEGF-D
Mammalian Cell Selection:	Neomycin
Vector:	pCMV6-Entry (PS100001)
E. coli Selection:	Kanamycin (25 ug/mL)
ORF Nucleotide Sequence:	>RC206549 ORF sequence Red=Cloning site Blue=ORF Green=Tags(s)

TTTTGTAATACGACTCACTATAGGGCGGCCGGAATTCGTCGACTGGATCCGGTACCGAGGAGATCTGCC
GCC**CGATCGC**C

ATGTACAGAGAGTGGGTAGTGGTGAATGTTTTTCATGATGTTGTACGTCCAGCTGGTGCAGGGCTCCAGTA
ATGAACATGGACCAGTGAAGCGATCATCTCAGTCCACATTGGAACGATCTGAACAGCAGATCAGGGCTGC
TTCTAGTTGGAGGAACACTTTCGAATTACTCACTCTGAGGACTGGAAGCTGTGGAGATGCAGGCTGAGG
CTCAAAAGTTTTACCAGTATGGACTCTCGCTCAGCATCCCATCGGTCCACTAGGTTTGGCGCAACTTTCT
ATGACATTGAAACACTAAAAGTTATAGATGAAGAATGGCAAAGAAGTCACTGCAGCCCTAGAGAAACGTG
CGTGGAGGTGGCCAGTGAAGTACCAACACATTCTCAAGCCCCCTGTGTGAACGTGTTCCGATGTGGTGGCTGTTGCAATGAAGAGACCTTATCTGTATGAACACCAGCACCTCGTACATTTCCAAAC
AGCTCTTTGAGATATCAGTGCCTTTGACATCAGTACCTGAATTAGTGCCTGTTAAAGTTGCCAATCATA
AGGTTGTAAGTGCTTGGCAACAGCCCCGCCATCCATACTCAATTATCAGAAGATCCATCCAGATCCCT
GAAGAAGATCGTGTCCATTCCAAGAACTCTGCTCCTATTGACATGCTATGGGATAGCAACAAATGTA
AATGTGTTTTGCAGGAGGAAAATCCACTTGCTGGAACAGAAGACCACTCTCATCTCCAGGAACAGCTCT
CTGTGGCCACACATGATGTTTGACGAAGATCGTTGCGAGTGTGTCTGTAACACCATGTCCCAAAGAT
CTAATCCAGCACCCAAAACTGCAGTTGCTTTGAGTGCAAAGAAAGTCTGGAGACCTGCTGCCAGAAGC
ACAAGCTATTTACCCAGACACCTGCAGCTGTGAGGACAGATGCCCTTTTCATACCAGACCATGTGCAAG
TGGCAAAACAGCATGTGCAAAGCATTGCCGCTTTCCAAGGAGAAAAGGGCTGCCAGGGGCCCCACAGC
CGAAAGAATCCT

ACGCGTACGCGGCCGCTCGAGCAGAACTCATCTCAGAAGAGGATCTGGCAGCAATGATATCCTGGATT
ACAAGGATGACGACGATAAGGTTTAA



[View online »](#)

Protein Sequence: >RC206549 protein sequence
Red=Cloning site Green=Tags(s)

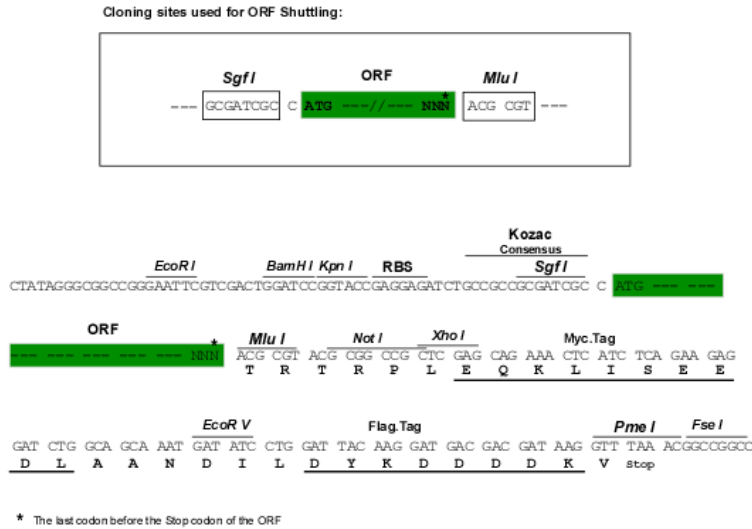
MYREWVVVNVFMMLYVQLVQSSNEHGPKRSSQSTLERSEQQIRAASSLEELLRITHSEDWKLWRCRLR
 LKSFTSMDSRSASHRSTRFAATFYDIETLKVIDEEWQRTQCSPRETCVEASELGKSTNTFFKPPCVNVF
 RCGGCCNEESLICMNTSTSYISKQLFEISVPLTSVPELVPVKVANHTGCKCLPTAPRHPYSIIRRSIQIP
 EEDRCSHKKLCPIDMLWDSNKCKCVLQEENPLAGTEDHSHLQEPALCGPHMMFDEDRCEVCVCKTPCPKD
 LIQHPKNCSCFECKESLETCCQKHKL FHPDTCSCEDRCPFHTRPCASGKTACA KHCRFPKEKRAAQGPMS
 RKNP

TRTRPLEQKLISEEDLAANDILDYKDDDDKV

Chromatograms: https://cdn.origene.com/chromatograms/mk6231_e07.zip

Restriction Sites: SgfI-MluI

Cloning Scheme:



ACCN: NM_004469

ORF Size: 1062 bp

OTI Disclaimer: The molecular sequence of this clone aligns with the gene accession number as a point of reference only. However, individual transcript sequences of the same gene can differ through naturally occurring variations (e.g. polymorphisms), each with its own valid existence. This clone is substantially in agreement with the reference, but a complete review of all prevailing variants is recommended prior to use. [More info](#)

OTI Annotation: This clone was engineered to express the complete ORF with an expression tag. Expression varies depending on the nature of the gene.

Components: The ORF clone is ion-exchange column purified and shipped in a 2D barcoded Matrix tube containing 10ug of transfection-ready, dried plasmid DNA (reconstitute with 100 ul of water).

Reconstitution Method:

1. Centrifuge at 5,000xg for 5min.
2. Carefully open the tube and add 100ul of sterile water to dissolve the DNA.
3. Close the tube and incubate for 10 minutes at room temperature.
4. Briefly vortex the tube and then do a quick spin (less than 5000xg) to concentrate the liquid at the bottom.
5. Store the suspended plasmid at -20°C. The DNA is stable for at least one year from date of shipping when stored at -20°C.

RefSeq: [NM_004469.5](#)

RefSeq Size: 2084 bp

RefSeq ORF: 1065 bp

Locus ID: 2277

UniProt ID: [O43915](#)

Cytogenetics: Xp22.2

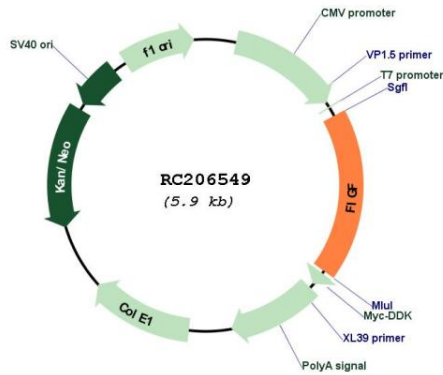
Protein Families: Druggable Genome, Secreted Protein

Protein Pathways: Bladder cancer, Cytokine-cytokine receptor interaction, Focal adhesion, mTOR signaling pathway, Pancreatic cancer, Pathways in cancer, Renal cell carcinoma

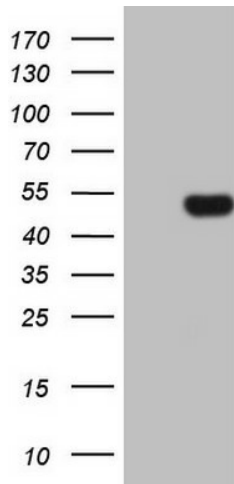
MW: 40.4 kDa

Gene Summary: The protein encoded by this gene is a member of the platelet-derived growth factor/vascular endothelial growth factor (PDGF/VEGF) family and is active in angiogenesis, lymphangiogenesis, and endothelial cell growth. This secreted protein undergoes a complex proteolytic maturation, generating multiple processed forms which bind and activate VEGFR-2 and VEGFR-3 receptors. This protein is structurally and functionally similar to vascular endothelial growth factor C. Read-through transcription has been observed between this locus and the upstream PIR (GenelD 8544) locus. [provided by RefSeq, Feb 2011]

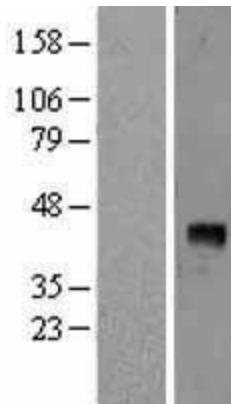
Product images:



Circular map for RC206549



HEK293T cells were transfected with the pCMV6-ENTRY control (Cat# [PS100001], Left lane) or pCMV6-ENTRY FIGF (Cat# RC206549, Right lane) cDNA for 48 hrs and lysed. Equivalent amounts of cell lysates (5 ug per lane) were separated by SDS-PAGE and immunoblotted with anti-FIGF (Cat# [TA807516]). Positive lysates [LY417969] (100ug) and [LC417969] (20ug) can be purchased separately from OriGene.



Western blot validation of overexpression lysate (Cat# [LY417969]) using anti-DDK antibody (Cat# [TA50011-100]). Left: Cell lysates from untransfected HEK293T cells; Right: Cell lysates from HEK293T cells transfected with RC206549 using transfection reagent MegaTran 2.0 (Cat# [TT210002]).