

Product datasheet for **RC206536**

P2X6 (P2RX6) (NM_005446) Human Tagged ORF Clone

Product data:

Product Type:	Expression Plasmids
Product Name:	P2X6 (P2RX6) (NM_005446) Human Tagged ORF Clone
Tag:	Myc-DDK
Symbol:	P2X6
Synonyms:	P2RXL1; P2X6; P2XM
Mammalian Cell Selection:	Neomycin
Vector:	pCMV6-Entry (PS100001)
E. coli Selection:	Kanamycin (25 ug/mL)



[View online »](#)

ORF Nucleotide Sequence:

>RC206536 representing NM_005446
 Red=Cloning site Blue=ORF Green=Tags(s)

TTTTGTAATACGACTCACTATAGGGCGGCCGGAATTCGTCGACTGGATCCGGTACCGAGGAGATCTGCC
 GCC**CGCATCGCC**

ATGTGCCCGCAGCTAGCAGGAGCTGGCAGCATGGGCTCCCGAGGGCTACGACAGGCTGGGGCTTCTGG
 ATTATAAGACGGAGAAGTATGTGATGACCAGAACTGGCGGGTGGGCGCCTGCAGAGGCTGCTGCAGTT
 TGGGATCGTGGTCTATGTGGTAGGGTGGGCTCTCTCGCCAAAAAAGGCTACCAGGAGCGGGACCTGGAA
 CCCAGTTTTCCATCATCACAACTCAAAGGGTTTCCGTCAGTCAAGGAGCTTGGAAACCGGC
 TGTGGGATGTGGCCGACTTCGTGAAGCCACCTCAGGGAGAGAAGTGTCTTCTTGGTGACCACTTCT
 TGTGACGCCAGCCAAAGTTCAGGGCAGATGCCAGAGCACCCGTCCTCCACTGGCTAACTGCTGGGTC
 GACGAGGACTGCCCCGAAGGGGAGGGAGGCACACAGCCACGGTGTAAAAACAGCCAGTGTGTGGTGT
 TCAATGGGACCCACAGGACCTGTGAGATCTGGAGTTGGTCCCAGTGGAGAGTGGCGTTGTGCCCTCGAG
 GCCCTGTGGCCAGGCCAGAACTTCACTGTTTCATAAAAACACAGTCACCTTCAGCAAGTTCAAC
 TTCTCTAAGTCCAATGCCTTGGAGACCTGGGACCCACCTATTTAAGCACTGCCCTATGAACCACAAT
 TCAGCCCCACTGTCCCCTGTTCCGCATTGGGGACCTCGTGGCCAAGGCTGGAGGGACCTTCGAGGACCT
 GGCGTTGCTGGGTGGCTCTGTAGGCATCAGAGTCACTGGGATTGTGACCTGGACACCGGGGACTCTGGC
 TGCTGGCCTCACTACTCCTTCCAGCTGCAGGAGAAGAGCTACAACCTCAGGACAGCCACTCACTGGTGGG
 AGCAACCGGGTGTGGAGGCCCGCACCTGCTCAAGCTCTATGGAATCCGTTTCGACATCCTCGTACCCGG
 GCAGGCAGGGAAGTTCGGGCTCATCCCCACGGCCGTCACACTGGGCACCGGGGACGCTTGGCTGGGCGTG
 GTCACCTTTTTCTGTGACCTGCTACTGCTGTATGTGGATAGAGAAGCCATTTCTACTGGAGGACAAAGT
 ATGAGGAGGCCAAGGCCCGAAAGCAACCGCAACTCTGTGTGGAGGGAGCTGGCCCTTGCATCCCAAGC
 CCGACTGGCCGAGTGCCTCAGACGGAGCTCAGCACCTGCACCCACGGCCACTGCTGCTGGGAGTCAGACA
 CAGACACCAGGATGGCCCTGTCCAAGTCTGACACCCACTTGCCAACCCATTCCGGGAGCCTG

ACGCGTACGCGGCCGCTCGAGCAGAACTCATCTCAGAAGAGGATCTGGCAGCAAATGATATCCTGGATT
 ACAAGGATGACGACGATAAGGTTTAA

Protein Sequence:

>RC206536 representing NM_005446
 Red=Cloning site Green=Tags(s)

MCPQLAGAGSMGSPGATTGWLLDYKTEKYVMTRNWRVGLQRLQFGIVVYVVGWALLAKKGYQERDLE
 PQFSIITKLGVSVTQIKELGNRLWDVADFVKPPQGENVFFLVNFLVTPAQVQGRCPHEPSVPLANCWV
 DEDCPEGEGGTHSHGKVTGQCVFNGTHRTCEIWSWCPVESGVVPSRPLLAQAQNFILFKNTVTFSKFN
 FSKSNALETWDPYFKHCRYEPQFSPYCPVFRIGDLVAKAGGTFEDLALLGGSVGIHVHWDCLDLDGDSG
 CWPHYSFQLQEKSYNFRTATHWWEQPGVEARTLLKLYGIRFDILVTGQAGKFGIIPAVTLGTGAAWLGV
 VTFFCDLLLLYVDREAHFYWRKYEEAKAPKATANSVWRELALASQARLAECLRRSSAPAPTATAAGSQT
 QTPGWPCPSSDTHLPTHSGSL

TRTRPLEQKLISEEDLAANDILDYKDDDDKV

Chromatograms:

https://cdn.origene.com/chromatograms/mg2620_b01.zip

Restriction Sites:

Sgfl-Mlul

Cloning Scheme:



ACCN: NM_005446

ORF Size: 1323 bp

OTI Disclaimer: The molecular sequence of this clone aligns with the gene accession number as a point of reference only. However, individual transcript sequences of the same gene can differ through naturally occurring variations (e.g. polymorphisms), each with its own valid existence. This clone is substantially in agreement with the reference, but a complete review of all prevailing variants is recommended prior to use. [More info](#)

OTI Annotation: This clone was engineered to express the complete ORF with an expression tag. Expression varies depending on the nature of the gene.

Components: The ORF clone is ion-exchange column purified and shipped in a 2D barcoded Matrix tube containing 10ug of transfection-ready, dried plasmid DNA (reconstitute with 100 ul of water).

Reconstitution Method:

1. Centrifuge at 5,000xg for 5min.
2. Carefully open the tube and add 100ul of sterile water to dissolve the DNA.
3. Close the tube and incubate for 10 minutes at room temperature.
4. Briefly vortex the tube and then do a quick spin (less than 5000xg) to concentrate the liquid at the bottom.
5. Store the suspended plasmid at -20°C. The DNA is stable for at least one year from date of shipping when stored at -20°C.

RefSeq: [NM_005446.4](#)

RefSeq Size: 2754 bp

RefSeq ORF: 1326 bp

Locus ID: 9127

UniProt ID: [O15547](#)

Cytogenetics: 22q11.21

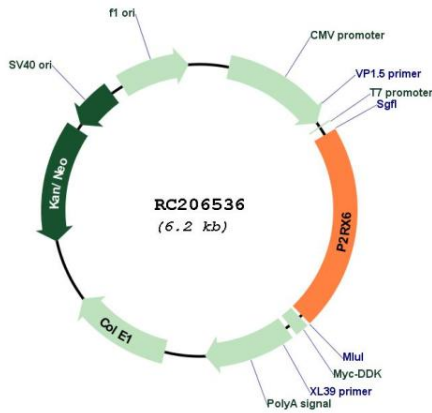
Protein Families: Druggable Genome, Ion Channels: ATP Receptors, Transmembrane

Protein Pathways: Calcium signaling pathway, Neuroactive ligand-receptor interaction

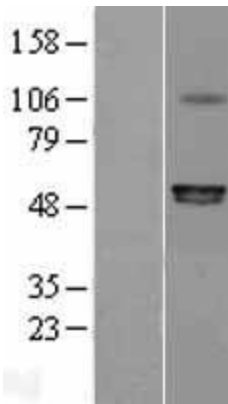
MW: 48.6 kDa

Gene Summary: The protein encoded by this gene belongs to the family of P2X receptors, which are ATP-gated ion channels and mediate rapid and selective permeability to cations. This gene is predominantly expressed in skeletal muscle, and regulated by p53. The encoded protein is associated with VE-cadherin at the adherens junctions of human umbilical vein endothelial cells. Alternative splicing results in multiple transcript variants. A related pseudogene, which is also located on chromosome 22, has been identified. [provided by RefSeq, Apr 2009]

Product images:



Circular map for RC206536



Western blot validation of overexpression lysate (Cat# [LY401674]) using anti-DDK antibody (Cat# [TA50011-100]). Left: Cell lysates from untransfected HEK293T cells; Right: Cell lysates from HEK293T cells transfected with RC206536 using transfection reagent MegaTran 2.0 (Cat# [TT210002]).