

Product datasheet for RC206535

Estrogen Sulfotransferase (SULT1E1) (NM_005420) Human Tagged ORF Clone

Product data:

Product Type:	Expression Plasmids
Product Name:	Estrogen Sulfotransferase (SULT1E1) (NM_005420) Human Tagged ORF Clone
Tag:	Myc-DDK
Symbol:	Estrogen Sulfotransferase
Synonyms:	EST; EST-1; ST1E1; STE
Mammalian Cell Selection:	Neomycin
Vector:	pCMV6-Entry (PS100001)
E. coli Selection:	Kanamycin (25 ug/mL)
ORF Nucleotide Sequence:	>RC206535 ORF sequence Red=Cloning site Blue=ORF Green=Tags(s)

TTTTGTAATACGACTCACTATAGGGCGGCCGGAATTCGTCGACTGGATCCGGTACCGAGGAGATCTGCC
GCC**CGATCGCC**

ATGAATTCTGAACTTGACTATTATGAAAAGTTTGAAGAAGTCCATGGGATTCTAATGTATAAAGATTTTG
TCAAATATTGGGATAATGTGGAAGCGTTCAGGCAAGACCAGATGATCTTGTCATTGCCACCTACCTAA
ATCTGGTACAACCTGGGTAGTGAATTTGTGTATGATCTATAAAGAGGGTGTGTGGAAAAGTGCAA
GAAGATGTAATTTTAAATCGAATACCTTTCCTGGAATGCAGAAAAGAAAACCTCATGAATGGAGTAAAC
AATTAGATGAGATGAATTCTCCTAGAATTGTGAAGACTCATTGGCCACCTGAACTTCTTCTGCCTCATT
TTGGGAAAAGGATTGTAAGATAATCTATCTTTCGCGGAATGCAAAGGATGTGGCTGTTTCTTTTATTAT
TTCTTTCTAATGGTGGCTGGTCATCCAATCCTGGATCCCTCCAGAGTTTGTGGAGAAATTCATGCAAG
GACAGGTTCTTATGGTTCCTGGTATAAACATGTAATCTTGGTGGGAAAAGGGAAAGAGTCCACGTGT
ACTATTCTTTTCTACGAAGACCTGAAAGAGGATATCAGAAAAGAGGTGATAAATTTGATACATTTCTG
GAAAGGAAGCCATCAGAGGAGCTTGTGGACAGGATTATACATCATACTTCGTTCCAAGAGATGAAGAACA
ATCCATCCACAAATTACACAACACTGCCAGACGAAATATGAACCAGAAATGTGCGCCCTCATGAGAAA
GGGAATTACAGGAGACTGGAAAATCACTTTACAGTAGCCCTGAATGAAAAATTTGATAAACATTATGAG
CAGCAAATGAAGGAATCTACACTGAAGTTTCGAACTGAGATC

ACGCGTACGCGGCCGCTCGAGCAGAAACTCATCTCAGAAGAGGATCTGGCAGCAAATGATATCCTGGATT
ACAAGGATGACGACGATAAGGTTTAA



[View online »](#)

Protein Sequence: >RC206535 protein sequence
 Red=Cloning site Green=Tags(s)

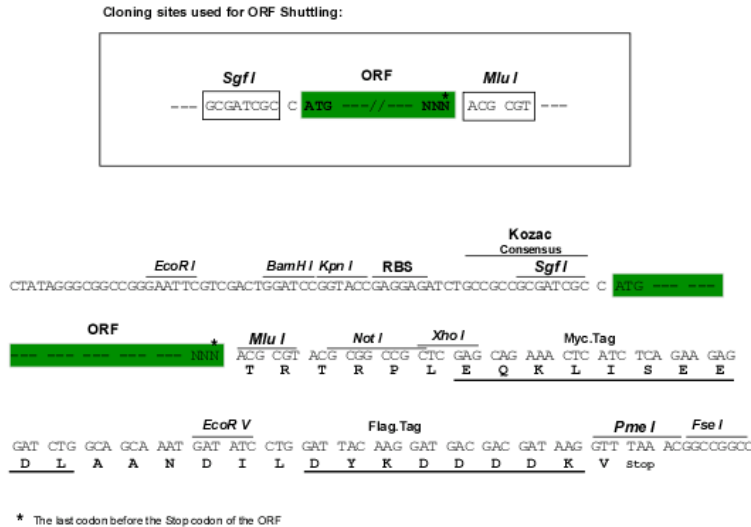
MNSELDYYEKFEVHGILMYKDFVKYWDNVEAFQARPDDLVIATYPKSGTTWVSEIYVMIYKEGDVEKCK
 EDVIFNRIPFLECRKENLMNGVKQLDEMNSPRIVKTHLPELLPASFWEKDKIIYLCRNAKDVAVSFYY
 FFLMVAGHPNPGSLPEFVEKFMQGVQVPGSWYKHVKSWEKSGKSPRVLFLFYEDLKEDIRKEVIKLIHFL
 ERKPSSEELVDRIIHHTSFQEMKNNPSTNYTTLPDEIMNQKLSPFMRKGITGDWKNHFTVALNEKFDKHYE
 QQMKESTLKFRTET

TRTRPLEQKLISEEDLAANDILDYKDDDDKV

Chromatograms: https://cdn.origene.com/chromatograms/mk6328_f01.zip

Restriction Sites: SgfI-MluI

Cloning Scheme:



ACCN: NM_005420

ORF Size: 882 bp

OTI Disclaimer: The molecular sequence of this clone aligns with the gene accession number as a point of reference only. However, individual transcript sequences of the same gene can differ through naturally occurring variations (e.g. polymorphisms), each with its own valid existence. This clone is substantially in agreement with the reference, but a complete review of all prevailing variants is recommended prior to use. [More info](#)

OTI Annotation: This clone was engineered to express the complete ORF with an expression tag. Expression varies depending on the nature of the gene.

Components: The ORF clone is ion-exchange column purified and shipped in a 2D barcoded Matrix tube containing 10ug of transfection-ready, dried plasmid DNA (reconstitute with 100 ul of water).

Reconstitution Method:

1. Centrifuge at 5,000xg for 5min.
2. Carefully open the tube and add 100ul of sterile water to dissolve the DNA.
3. Close the tube and incubate for 10 minutes at room temperature.
4. Briefly vortex the tube and then do a quick spin (less than 5000xg) to concentrate the liquid at the bottom.
5. Store the suspended plasmid at -20°C. The DNA is stable for at least one year from date of shipping when stored at -20°C.

RefSeq: [NM_005420.3](#)

RefSeq Size: 1805 bp

RefSeq ORF: 885 bp

Locus ID: 6783

UniProt ID: [P49888](#)

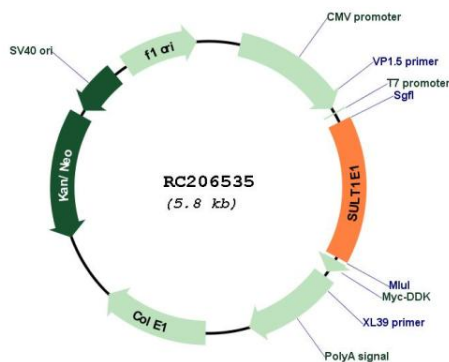
Cytogenetics: 4q13.3

Protein Pathways: Androgen and estrogen metabolism, Sulfur metabolism

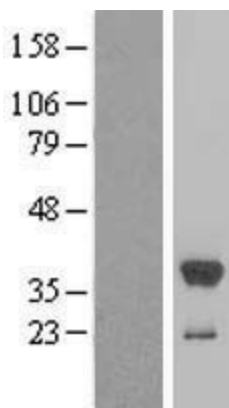
MW: 35.1 kDa

Gene Summary: Sulfotransferase enzymes catalyze the sulfate conjugation of many hormones, neurotransmitters, drugs, and xenobiotic compounds. These cytosolic enzymes are different in their tissue distributions and substrate specificities. The gene structure (number and length of exons) is similar among family members. This gene encodes a protein that transfers a sulfo moiety to and from estrone, which may control levels of estrogen receptors. [provided by RefSeq, Jul 2008]

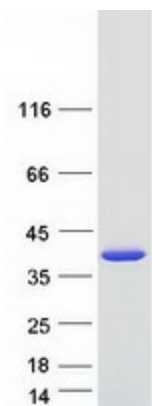
Product images:



Circular map for RC206535



Western blot validation of overexpression lysate (Cat# [LY417314]) using anti-DDK antibody (Cat# [TA50011-100]). Left: Cell lysates from untransfected HEK293T cells; Right: Cell lysates from HEK293T cells transfected with RC206535 using transfection reagent MegaTran 2.0 (Cat# [TT210002]).



Coomassie blue staining of purified SULT1E1 protein (Cat# [TP306535]). The protein was produced from HEK293T cells transfected with SULT1E1 cDNA clone (Cat# RC206535) using MegaTran 2.0 (Cat# [TT210002]).