

Product datasheet for **RC206532**

LRRC17 (NM_001031692) Human Tagged ORF Clone

Product data:

Product Type:	Expression Plasmids
Product Name:	LRRC17 (NM_001031692) Human Tagged ORF Clone
Tag:	Myc-DDK
Symbol:	LRRC17
Synonyms:	P37NB
Mammalian Cell Selection:	Neomycin
Vector:	pCMV6-Entry (PS100001)
E. coli Selection:	Kanamycin (25 ug/mL)



[View online »](#)

ORF Nucleotide Sequence:

>RC206532 ORF sequence
 Red=Cloning site Blue=ORF Green=Tags(s)

TTTTGTAATACGACTCACTATAGGGCGGCCGGGAATTCGTCGACTGGATCCGGTACCGAGGAGATCTGCC
 GCC**CGCATCGCC**

ATGCGTGTGGTTACCATTGTAATCTTGCTCTGCTTTTGCAAAGCGGCTGAGCTGCGCAAAGCAAGCCCAG
 GCAGTGTGAGAAGCCGAGTGAATCATGGCCGGCGGGTGGAGCCGGAGAGGCTCCAACCCGGTCAAACG
 CTACGCACCAGGCTCCCGTGTGACGTGTACACATATCTCCATGAGAAATACTTAGATTGCAAGAAAGA
 AAATTAGTTTATGTGCTGCCTGGTTGGCCTCAGGATTTGCTGCACATGCTGCTAGCAAGAAACAAGATCC
 GCACATTGAAGAACAACATGTTTTCCAAGTTTAAAAAGCTGAAAAGCCTGGATCTGCAGCAGAATGAGAT
 CTCTAAAATTGAGAGTGAGGCGTTCTTTGGTTTAAACAACTCACCACCCTTTACTGCAGCACAACCAG
 ATCAAAGTCTTGACGGAGGAAGTGTTCATTTACACACCTCTTTGAGCTACCTGCGTCTTTATGACAACC
 CCTGGCACTGTACTTGTGAGATAGAAACGCTTATTTCAATGTTGCAGATCCCAGGAACCCGAATTTGGG
 GAACTACGCCAAGTGTGAAAGTCCACAAGAACAATAAAAACTGCGGCAGATAAAATCTGAACAG
 TTGTGTAATGAAGAAGAAAAGGAACAATTGGACCCGAAACCCCAAGTGTACAGGGAGACCCCAAGTATCA
 AGCCTGAGGTGGACTCAACTTTTTGCCACAATTATGTGTTTTCCATACAAACACTGGACTGCAAAAAGGAA
 AGAGTTGAAAAAGTGCCAAACAACATCCCTCCAGATATTGTTAAACTTGACTTGTACATAATAAAATC
 AACCAACTTCGACCCAAGGAATTTGAAGATGTTTCATGAGCTGAAGAAATTAACCTCAGCAGCAATGGCA
 TTGAATTCATCGATCCTGCCGCTTTTTAGGGCTCACACATTTAGAAGAATTAGATTTATCAAACAACAG
 TCTGCAAACTTTGACTATGGCGTATTAGAAGACTTGTATTTTTGAACTCTTGTGGCTCAGAGATAAC
 CCTTGGAGATGTACTACAACATTCACCTACTACTGGTTAAAGCACCCTACAATGTCCATTTTA
 ATGGCCTGGAATGCAAAACGCTGAAGAATACAAAGGATGGTCTGTGGGAAAATATATTAGAAGTTACTA
 TGAAGAATGCCCAAGACAAGTTACCAGCATATCCTGAGTCATTTGACCAAGACACAGAAGATGATGAA
 TGGGAAAAAAACATAGAGATCACACCGCAAAGAAGCAAAGCGTAATAATTACTATAGTAGGA

ACGCGTACGCGGCCGCTCGAGCAGAACTCATCTCAGAAGAGGATCTGGCAGCAATGATATCCTGGATT
 ACAAGGATGACGACGATAAGGTTTAA

Protein Sequence:

>RC206532 protein sequence
 Red=Cloning site Green=Tags(s)

MRVVTIVILLCFCKAAELRKASPGSVRSRVNHGRAGGGRRGNSNPVKRYAPGLPCDVYTYLHEKYLDQER
 KLVYVLPGWPDLLHMLLARNKIRTLKNNMFSKFKKLSLDLQQNEISKIESEAFFGLNKLTTLLLQHNQ
 IKVLTEEVFIYTPLLSYLRLYDNPWHCTCEIETLISMLQIPRNRNLGNYAKCESPQEKNKLRQIKSEQ
 LCNEEEKEQLDPKPQVSGRPPVIKPEVDSTFCHNYVFPITLDCKRKELKKVPNNIPDIVKLDLSYNKI
 NQLRPKEFEDVHELKLNLSNGIEFIDPA AFLGLTHLEELDLNNSLQNFYDGVLEDLYFLKLLWLRDN
 PWRCDYNIHYLYWLKHHYNVHFNGLCKTPEEYKGSVSGKYIRSYEECPKDKLPAYPESFDQDTEDE
 WEKKHRDHTAKKQSVIITIVG

TRTRPLEQKLISEEDLAANDILDYKDDDDKV

Chromatograms:

https://cdn.origene.com/chromatograms/mk6520_f04.zip

Restriction Sites:

Sgfl-Mlul

Cloning Scheme:


ACCN: NM_001031692

ORF Size: 1323 bp

OTI Disclaimer: The molecular sequence of this clone aligns with the gene accession number as a point of reference only. However, individual transcript sequences of the same gene can differ through naturally occurring variations (e.g. polymorphisms), each with its own valid existence. This clone is substantially in agreement with the reference, but a complete review of all prevailing variants is recommended prior to use. [More info](#)

OTI Annotation: This clone was engineered to express the complete ORF with an expression tag. Expression varies depending on the nature of the gene.

Components: The ORF clone is ion-exchange column purified and shipped in a 2D barcoded Matrix tube containing 10ug of transfection-ready, dried plasmid DNA (reconstitute with 100 ul of water).

Reconstitution Method:

1. Centrifuge at 5,000xg for 5min.
2. Carefully open the tube and add 100ul of sterile water to dissolve the DNA.
3. Close the tube and incubate for 10 minutes at room temperature.
4. Briefly vortex the tube and then do a quick spin (less than 5000xg) to concentrate the liquid at the bottom.
5. Store the suspended plasmid at -20°C. The DNA is stable for at least one year from date of shipping when stored at -20°C.

RefSeq: [NM_001031692.3](#)

RefSeq Size: 2250 bp

RefSeq ORF: 1326 bp

Locus ID: 10234

UniProt ID: [Q8N6Y2](#)

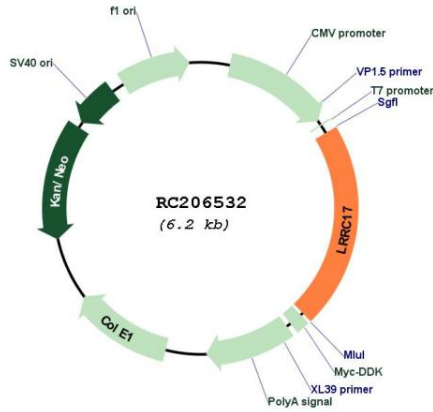
Cytogenetics: 7q22.1

Protein Families: Druggable Genome

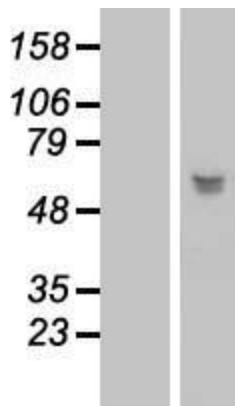
MW: 51.8 kDa

Gene Summary: Involved in bone homeostasis. Acts as a negative regulator of RANKL-induced osteoclast precursor differentiation from bone marrow precursors (By similarity).[UniProtKB/Swiss-Prot Function]

Product images:



Circular map for RC206532



Western blot validation of overexpression lysate (Cat# [LY421903]) using anti-DDK antibody (Cat# [TA50011-100]). Left: Cell lysates from untransfected HEK293T cells; Right: Cell lysates from HEK293T cells transfected with RC206532 using transfection reagent MegaTran 2.0 (Cat# [TT210002]).