

Product datasheet for **RC206524**

PNLIPRP1 (NM_006229) Human Tagged ORF Clone

Product data:

Product Type:	Expression Plasmids
Product Name:	PNLIPRP1 (NM_006229) Human Tagged ORF Clone
Tag:	Myc-DDK
Symbol:	PNLIPRP1
Synonyms:	PLRP1
Mammalian Cell Selection:	Neomycin
Vector:	pCMV6-Entry (PS100001)
E. coli Selection:	Kanamycin (25 ug/mL)



[View online »](#)

ORF Nucleotide Sequence:

>RC206524 ORF sequence
 Red=Cloning site Blue=ORF Green=Tags(s)

TTTTGTAATACGACTCACTATAGGGCGGCCGGGAATTCGTCGACTGGATCCGGTACCGAGGAGATCTGCC
 GCC**CGCATCGCC**

ATGCTGATCTTCTGGACAATCACACTTTTCTGCTGGGAGCAGCCAAAGGAAAAGAAGTTTGTATGAGG
 ACCTCGGGTGCTTTTCTGACACTGAGCCCTGGGGCGGGACAGCAATCAGGCCCTGAAAATTCTCCCTG
 GAGCCCTGAGAAGATCGGCACCCGCTTCTGCTGTACACCAATGAAAACCCAAACAATTCAAATTCTC
 CTCCTCTGATCCATCAACAATTGAGGCATCAAATTTTCAAATGGACAGAAAGACCCGGTTCATCATCC
 ATGGCTTCATAGACAAAGGAGATGAGAGCTGGGTGACAGACATGTGCAAGAACTGTTTCGAGGTGGAGGA
 GGTGAAGTGCATCTCGGTGGACTGGAAGAAGGGCTCCCAAGCCACCTACACACAGGCTGCCAACACGTG
 CGAGTGGTGGGCGCCAGGTGGCCAGATGCTCGACATCTCTTGACAGAGTATAGCTACCCCTTCCA
 AAGTTCACCTCATTGGCCACAGCCTGGGAGCCACGTGGCTGGAGAGGCAGGAAGCAAGACTCCAGGCC
 GAGCAGGATTACAGGGTTGGATCTGTAGAAGCAAGTTTCGAGAGTACTCTGAAGAGGTGCGACTTGAT
 CCCTCTGATGCTACTTTGTTGATGTGATTCACACGGATGCAGCTCCCTGATCCATTCTTGGGTTTTG
 GAACGAACCAACAGATGGGTCATCTTGACTTCTCCCAATGGAGGAGAGAGCATGCCGGATGCAAGAA
 GAATGCCCTGTCTCAGATCGTGGATCTAGATGGCATCTGGGCGGGAACCCGGGACTTTGTGGCTTCAAT
 CACCTAAGAAGCTACAAGTATTACTTGGAAAGCATCTCAATCCCGATGGGTTTGTGCTATCCCTGCA
 CTTCTACAAGTCTTTGAGTCTGACAAGTCTCCCGTGTCCAGATCAAGGATGCCACAGATGGGTCA
 CTATGCTGATAAATTTGCTGGCAGGACAAGTGAAGAGCAGCAGAAATCTTCTTGAACACAGGAGAGGCT
 AGCAATTCGCTCGCTGGAGATATGGGGTTCCATCACACTGTCTGGAAGAACAGCCACTGGTCAGATCA
 AAGTTGCTTTGTTTGGAAATAAGGGAACACTCACCAGTACAGCATCTCAGGGGATTCTCAAACCAGG
 CTAACCCATTCTATGAGTTTGTGCAAAGCTGGATGTTGGAACAATTGACAAAGTCAAGTTTCTTTGG
 AATAACAATGTGATAAATCCAACCTCCCAAAAGTGGGTGCCACCAAGATCACTGTGCAAAAAGGAGAAG
 AGAAGACAGTGTACAACCTCTGTAGCGAAGACACAGTGCGGGAAGACACGCTGCTCACCTCACGCCCTG
 C

ACGCGTACGCGGCCGCTCGAGCAGAAACTCATCTCAGAAGAGGATCTGGCAGCAATGATATCTGGATT
 ACAAGGATGACGACGATAAGGTTTAA

Protein Sequence:

>RC206524 protein sequence
 Red=Cloning site Green=Tags(s)

MLIFWTITLFLGAAKGKEVCYEDLGCFSDEPWGGTAIRPLKILPWSPEKIGTRFLLYTNENPNNFQIL
 LLSDPSTIEASNFQMDRKRTRFIHGFIDKGDSESWVDMCKKLFEEVNCICVDWKKGSQATYTTQAANNV
 RVVGAQVAQMLDILLTEYSYPPSKVHLIGHSLGAHVAGEAGSKTPGLSRITGLDPVEASFESTPEEVRLD
 PSDADFDVVIHTDAAPLIPFLGFGTNQQMGLDFPNGGESMPGCKKNALSQIVLDLGIWAGTRDFVACN
 HLRYSKYYLESILNPDGFAAYPCTSYKSFESDKCFPCPDQGPCQMGHYADKFAGRTSEEQQKFFLNTGEA
 SNFARWRYGVSITLSGRTATGQIKVALFGNKGNTHQYSIFRGLKPGSTHSEYFDAKLDVGTIDKVKFLW
 NNNVINPTLPKVGATKITVQKGEKTVYNFCSEDTVREDTLLTLTPC

TRTRPLEQKLISEEDLAANDILDYKDDDDKV

Chromatograms:

https://cdn.origene.com/chromatograms/mk6520_b12.zip

Restriction Sites:

Sgfl-MluI

Cloning Scheme:



ACCN: NM_006229

ORF Size: 1401 bp

OTI Disclaimer: The molecular sequence of this clone aligns with the gene accession number as a point of reference only. However, individual transcript sequences of the same gene can differ through naturally occurring variations (e.g. polymorphisms), each with its own valid existence. This clone is substantially in agreement with the reference, but a complete review of all prevailing variants is recommended prior to use. [More info](#)

OTI Annotation: This clone was engineered to express the complete ORF with an expression tag. Expression varies depending on the nature of the gene.

Components: The ORF clone is ion-exchange column purified and shipped in a 2D barcoded Matrix tube containing 10ug of transfection-ready, dried plasmid DNA (reconstitute with 100 ul of water).

Reconstitution Method:

1. Centrifuge at 5,000xg for 5min.
2. Carefully open the tube and add 100ul of sterile water to dissolve the DNA.
3. Close the tube and incubate for 10 minutes at room temperature.
4. Briefly vortex the tube and then do a quick spin (less than 5000xg) to concentrate the liquid at the bottom.
5. Store the suspended plasmid at -20°C. The DNA is stable for at least one year from date of shipping when stored at -20°C.

RefSeq: [NM_006229.4](#)

RefSeq Size: 1480 bp

RefSeq ORF: 1404 bp

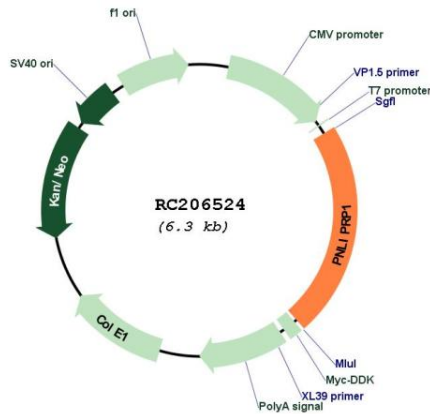
Locus ID: 5407

UniProt ID: [P54315](#)

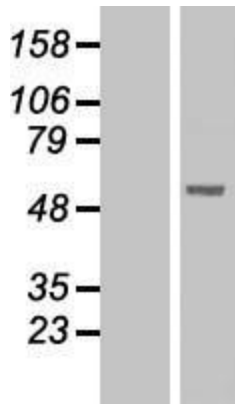
Cytogenetics: 10q25.3

Protein Families: Druggable Genome, Secreted Protein
Protein Pathways: Glycerolipid metabolism, Metabolic pathways
MW: 51.8 kDa
Gene Summary: May function as inhibitor of dietary triglyceride digestion. Lacks detectable lipase activity towards triglycerides, diglycerides, phosphatidylcholine, galactolipids or cholesterol esters (in vitro) (By similarity).[UniProtKB/Swiss-Prot Function]

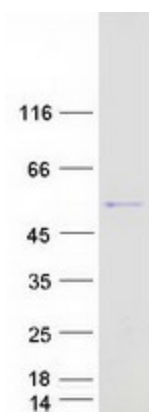
Product images:



Circular map for RC206524



Western blot validation of overexpression lysate (Cat# [LY416785]) using anti-DDK antibody (Cat# [TA50011-100]). Left: Cell lysates from untransfected HEK293T cells; Right: Cell lysates from HEK293T cells transfected with RC206524 using transfection reagent MegaTran 2.0 (Cat# [TT210002]).



Coomassie blue staining of purified PNLIPRP1 protein (Cat# [TP306524]). The protein was produced from HEK293T cells transfected with PNLIPRP1 cDNA clone (Cat# RC206524) using MegaTran 2.0 (Cat# [TT210002]).