

## Product datasheet for **RC206521**

### **BS69 (ZMYND11) (NM\_212479) Human Tagged ORF Clone**

#### **Product data:**

Product Type:	Expression Plasmids
Product Name:	BS69 (ZMYND11) (NM_212479) Human Tagged ORF Clone
Tag:	Myc-DDK
Symbol:	BS69
Synonyms:	BRAM1; BS69; MRD30
Mammalian Cell Selection:	Neomycin
Vector:	pCMV6-Entry (PS100001)
E. coli Selection:	Kanamycin (25 ug/mL)



[View online »](#)

**ORF Nucleotide Sequence:**

>RC206521 ORF sequence  
 Red=Cloning site Blue=ORF Green=Tags(s)

TTTTGTAATACGACTCACTATAGGGCGGCCGGAATTCGTCGACTGGATCCGGTACCGAGGAGATCTGCC  
 GCC**GCGATCGCC**

ATGTCTCGAGTCCACGGTATGCACCCTAAAGAGACCACCCGTGAGCTGAGCTTAGCTGTGAAAGATGGTC  
 TTATTGTCGAAACTCTAACAGTGGGCTGCAAAGGTTCAAAGCTGGTATTGAACAAGAAGGATATTGGTT  
 GCCAGGAGATGAGATTGACTGGGAAACAGAAAATCATGACTGGTATTGTTTTGAATGCCATTTGCCTGGA  
 GAGGTGTGATATGTGACCTGTGTTTTCGTGTGTATCATTCCAAGTGTGTTGTCTGATGAGTTCAGGCTTA  
 GAGACAGCAGTAGTCCCTGGCAGTGGCCAGTTTGCAGGAGCATTAAAGAAGAATAACAACAAACAGGA  
 GATGGGCACATACCTCAGATTCATTGTCTCCCGCATGAAGGAGAGGGCTATAGATCTTAATAAAAAGGGG  
 AAGGACAATAAACACCCGATGTACAGGAGGCTGGTGCCTCAGCTGTGGACGTTCCACCATTCAAGAGA  
 AAGTGAATGAAGGAAATACCGAAGTTATGAAGAGTTCAAAGCTGATGCCAATTGCTTCTCCACAATAC  
 CGTGATTTTCTATGGAGACAGTGAAGCAAGCTGACATTGCGAGGATGCTATATAAAGACACATGTCATGAG  
 CTGGATGAACTGCAGCTTTGCAAGAATTGCTTTTACTTGTCAAATGCTCGTCTGACAACCTGGTTCTGTT  
 ATCCTTGATACCTAATCATGAGCTGGTTTGGGCTAAAATGAAAGGTTTTGGGTTTTGGCCAGCCAAAGT  
 CATGCAGAAAGAAGACAATCAAGTCGACGTTTCGCTTCTTTGGCCACCACCAGAGGGCCTGGATTCTT  
 TCTGAAAACATCAAGATATCACAGTCAACATTCATCGGCTGCACGTGAAGCGCAGTATGGGTTGGAAAA  
 AGGCTGTGATGAGCTGGAGCTGCATCAGCGTTTCTACGAGAAGGGAGATTTTGGAAATCTAAGAAATGA  
 GGACCGAGGTGAGGAAGAGGCAGAATCCAGTATCTCCTCCACCAGTAATGAGCAGCTAAAGGTCACTCAA  
 GAACCAAGAGCAAAGAAAGGACGACGTAATCAAAGTGTGGAGCCAAAAAGGAAGAACCAGAGCCTGAAA  
 CAGAAGCAGTAAGTTCTAGCCAGGAAATACCCAGTGCCTCAGCCCATCGAAAAAGTCTCCGTGCAAC  
 TCAGACAAGAAGTTAAGTGCCTTCCACCAAGAATGCTGCATCGGAGCACCCAGACCACAAACGACGGC  
 GTGTGTCAGAGCATGTGCCATGACAAAATACACCAAGATCTTCAATGACTTCAAAGACCGGATGAAGTCGG  
 ACCACAAGCGGGAGACAGAGCGTGTGTCGAGAAGCTCTGGAGAAGCTGCGTTCTGAAATGGAAGAAGA  
 AAAGAGACAAGCTGTAATAAAGCTGTAGCCAACATGCAGGGTGAGATGGACAGAAAATGTAAGCAAGTA  
 AAGGAAAAGTGTAAAGGAAGATTTGTAGAAGAAATCAAGAAGCTGGCAACACAGCACAAGCAACTGATT  
 CTCAGACCAAGAAGAAGCAGTGGGTAATACCAGTCTTTTT

**ACGCGT**ACGCGGCCGCTCGAGCAGAAACTCATCTCAGAAGAGGATCTGGCAGCAAATGATATCCTGGATT  
 ACAAGGATGACGACGATAAGGTTTAA

**Protein Sequence:**

>RC206521 protein sequence  
 Red=Cloning site Green=Tags(s)

MSRVHGMHPKETTRQLSLAVKDGLIVETLTVGCKGSKAGIEQEGYWLPGDEIDWETENHDWYCFEHLPG  
 EVLICDLCFRVYHSKCLSDFFRLRDS SSPWQCPVCRS IKKKNTNKQEMGTYLRFIVSRMKERAIDLNKKG  
 KDNKHPMYRRLVHSAVDVPTIQEKVNEGKYRSYEEFKADAQLLLHNTVIFYGDSEQADIARMLYKDTCHE  
 LDELQLCKNCFYLSNARPDNWFYPCIPNHEL VWAKMKGF GFWPAKVMQKEDNQVDVRFVGHHRQAWIP  
 SENIQDITVNIHRLHVKRSMGWKKACDELELHQRFLREGRFWKS KNEDRGEEEAESSISSTSNEQLKVTQ  
 EPRAKKGRRNQSVPEPKKEPEPEAVSSSQEIPTMPQPIEKVSVSTQTKKL SASSPRMLHRSTQTNDG  
 VCQSMCHDKYTKIFNDFKDRMKS DHKRETERVVREALEKLRSEMEEEKRQAVNKAVANMQGEMDRKCKQV  
 KEKCKEEFVEEIKKLATQHKQLISQTKKKQWVNTSLF

**TR**TRPLEQKLI SEEDLAANDILDYKDDDDKV

**Chromatograms:**

[https://cdn.origene.com/chromatograms/mk6520\\_h10.zip](https://cdn.origene.com/chromatograms/mk6520_h10.zip)

**Restriction Sites:**

Sgfl-MluI

**Cloning Scheme:**


**ACCN:** NM\_212479

**ORF Size:** 675 bp

**OTI Disclaimer:** The molecular sequence of this clone aligns with the gene accession number as a point of reference only. However, individual transcript sequences of the same gene can differ through naturally occurring variations (e.g. polymorphisms), each with its own valid existence. This clone is substantially in agreement with the reference, but a complete review of all prevailing variants is recommended prior to use. [More info](#)

**OTI Annotation:** This clone was engineered to express the complete ORF with an expression tag. Expression varies depending on the nature of the gene.

**Components:** The ORF clone is ion-exchange column purified and shipped in a 2D barcoded Matrix tube containing 10ug of transfection-ready, dried plasmid DNA (reconstitute with 100 ul of water).

- Reconstitution Method:**
1. Centrifuge at 5,000xg for 5min.
  2. Carefully open the tube and add 100ul of sterile water to dissolve the DNA.
  3. Close the tube and incubate for 10 minutes at room temperature.
  4. Briefly vortex the tube and then do a quick spin (less than 5000xg) to concentrate the liquid at the bottom.
  5. Store the suspended plasmid at -20°C. The DNA is stable for at least one year from date of shipping when stored at -20°C.

**RefSeq:** [NM\\_212479.1](#), [NP\\_997644.1](#)

**RefSeq Size:** 2813 bp

**RefSeq ORF:** 1704 bp

**Locus ID:** 10771

**UniProt ID:** [Q15326](#)

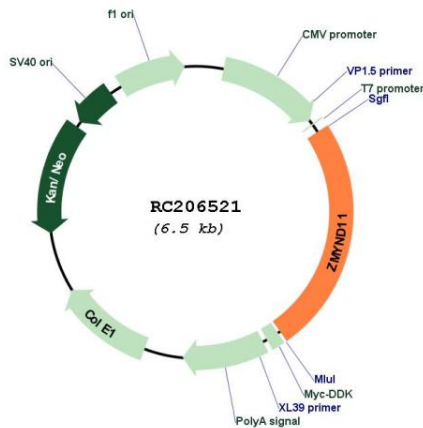
**Cytogenetics:** 10p15.3

**Protein Families:** Druggable Genome, Transcription Factors

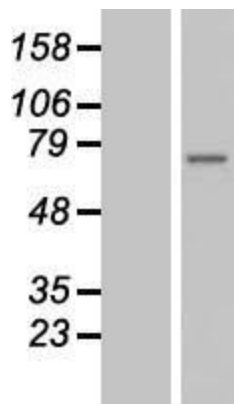
**MW:** 61.8 kDa

**Gene Summary:** The protein encoded by this gene was first identified by its ability to bind the adenovirus E1A protein. The protein localizes to the nucleus. It functions as a transcriptional repressor, and expression of E1A inhibits this repression. Alternatively spliced transcript variants encoding different isoforms have been identified. [provided by RefSeq, Jul 2008]

**Product images:**



Circular map for RC206521



Western blot validation of overexpression lysate (Cat# [LY403950]) using anti-DDK antibody (Cat# [TA50011-100]). Left: Cell lysates from untransfected HEK293T cells; Right: Cell lysates from HEK293T cells transfected with RC206521 using transfection reagent MegaTran 2.0 (Cat# [TT210002]).