

Product datasheet for **RC206520**

CGREF1 (NM_006569) Human Tagged ORF Clone

Product data:

Product Type:	Expression Plasmids
Product Name:	CGREF1 (NM_006569) Human Tagged ORF Clone
Tag:	Myc-DDK
Symbol:	CGREF1
Synonyms:	CGR11
Mammalian Cell Selection:	Neomycin
Vector:	pCMV6-Entry (PS100001)
E. coli Selection:	Kanamycin (25 ug/mL)
ORF Nucleotide Sequence:	>RC206520 ORF sequence Red=Cloning site Blue=ORF Green=Tags(s)

TTTTGTAATACGACTCACTATAGGGCGGCCGGAATTCGTCGACTGGATCCGGTACCGAGGAGATCTGCC
GCC**CGGATCGCC**

ATGTTACCTTTGACGATGACAGTGTTAATCCTGCTGCTGCTCCCCACGGGTCAGGCTGCCCAAAGGATG
GAGTCACAAGGCCAGACTCTGAAGTGCAGCATCAGCTCCTGCCAACCCCTTCCAGCCAGGCCAGGAGCA
GCTCGGACTTCTGCAGAGCTACCTAAAGGGACTAGGAAGGACAGAAGTGCACACTGGAGCATCTGAGCCGG
GAGCAGGTTCTCCTCTACCTCTTTGCCCTCCATGACTATGACCAGAGTGGACAGCTGGATGGCCTGGAGC
TGCTGTCCATGTTGACAGCTGCTCTGGCCCTGGAGCTGCCAACTCTCCTACCACCAACCCGGTGATATT
GATAGTGGACAAAGTGCAGAGCGCAGGACCTGAATGGGGATGGGCTCATGACCCCTGCTGAGCTCATC
AACTTCCCGGGAGTAGCCCTCAGGCACGTGGAGCCCGGAGAGCCCTTGCTCCATCTCCTCAGGAGCCAC
AAGCTGTTGGAAGGCAGTCCCTATTAGCTAAAAGCCCAATTAAGACAAGAAACACAGGAAGCCCTGGTCC
CAGAGAAGAAGCAAAGGGCCAGGTAGAGGCCAGAGGGGAGTCTTTGGATCCTGTCCAGGAGCCTGGGGGC
CAGGCAGAGGCTGATGGAGATGTTCCAGGGCCAGAGGGGAAGCTGAGGGCCAGGCAGAGGCTAAAGGAG
ATGCCCTGGGGCCAGAGGGGAAGCTGGGGCCAGGCAGAGGCTGAAGGAGATGCCCCGGGGCCAGAGG
GGAAGCTGGGGCCAGGCAGAGGCCAGGGAGAATGGAGAGGAGGCCAAGGAACCTCCAGGGGAACACTG
GAGTCTAAGAACACCCAAATGACTTTGAGGTGCACATTGTTCAAGTGGAGAATGATGAGATC

ACGCGTACGCGGCCGCTCGAGCAGAAACTCATCTCAGAAGAGGATCTGGCAGCAAATGATATCCTGGATT
ACAAGGATGACGACGATAAGGTTTAA



[View online »](#)

Protein Sequence: >RC206520 protein sequence
Red=Cloning site Green=Tags(s)

MLPLTMTVLILLLLPTGQAAPKDGVTRPDSEVQHQLLPNPFQPGQEQLGLLQSYLKGLGRTEVQLEHLR
 EQVLLYLFALHDYDQSGQLDGLELLSMLTAALAPGAANSPTTNPVILIVDKVLETQDLNGDGLMTPAELI
 NFPGVALRHVEPGEPLAPSPQEPQAVGRQSLAKSPLRQETQEAPGPREEAKGQVEARRESLDPVQEPGG
 QAEADGDVPGPRGEAEGQAEAKGDAPGPRGEAGGQAEAEADGAPGPRGEAGGQAEARENGEEAKELPGETL
 ESKNTQNDFEVHIVQVENDEI

TRTRPLEQKLISEEDLAANDILDYKDDDDKV

Chromatograms: https://cdn.origene.com/chromatograms/mk6520_d04.zip

Restriction Sites: SgfI-MluI

Cloning Scheme:



ACCN: NM_006569

ORF Size: 903 bp

OTI Disclaimer: The molecular sequence of this clone aligns with the gene accession number as a point of reference only. However, individual transcript sequences of the same gene can differ through naturally occurring variations (e.g. polymorphisms), each with its own valid existence. This clone is substantially in agreement with the reference, but a complete review of all prevailing variants is recommended prior to use. [More info](#)

OTI Annotation: This clone was engineered to express the complete ORF with an expression tag. Expression varies depending on the nature of the gene.

Components: The ORF clone is ion-exchange column purified and shipped in a 2D barcoded Matrix tube containing 10ug of transfection-ready, dried plasmid DNA (reconstitute with 100 ul of water).

Reconstitution Method:

1. Centrifuge at 5,000xg for 5min.
2. Carefully open the tube and add 100ul of sterile water to dissolve the DNA.
3. Close the tube and incubate for 10 minutes at room temperature.
4. Briefly vortex the tube and then do a quick spin (less than 5000xg) to concentrate the liquid at the bottom.
5. Store the suspended plasmid at -20°C. The DNA is stable for at least one year from date of shipping when stored at -20°C.

RefSeq: [NM_006569.3](#)

RefSeq Size: 1934 bp

RefSeq ORF: 957 bp

Locus ID: 10669

UniProt ID: [Q99674](#)

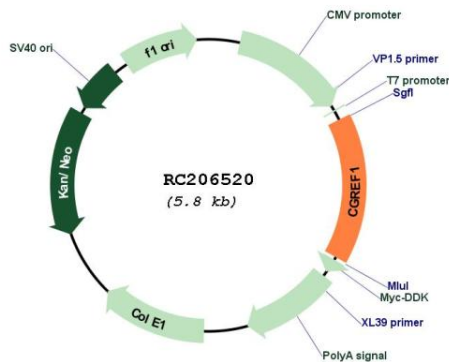
Cytogenetics: 2p23.3

Domains: EFh

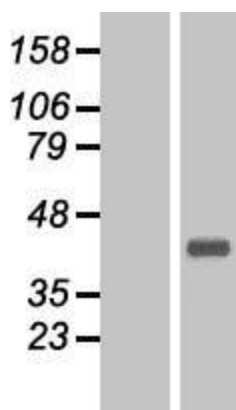
MW: 31.9 kDa

Gene Summary: Mediates cell-cell adhesion in a calcium-dependent manner (By similarity). Able to inhibit growth in several cell lines.[UniProtKB/Swiss-Prot Function]

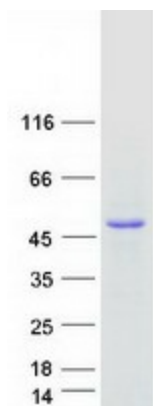
Product images:



Circular map for RC206520



Western blot validation of overexpression lysate (Cat# [LY416558]) using anti-DDK antibody (Cat# [TA50011-100]). Left: Cell lysates from untransfected HEK293T cells; Right: Cell lysates from HEK293T cells transfected with RC206520 using transfection reagent MegaTran 2.0 (Cat# [TT210002]).



Coomassie blue staining of purified CGREF1 protein (Cat# [TP306520]). The protein was produced from HEK293T cells transfected with CGREF1 cDNA clone (Cat# RC206520) using MegaTran 2.0 (Cat# [TT210002]).