

Product datasheet for **RC206517L2V**

Bonzo (CXCR6) (NM_006564) Human Tagged ORF Clone Lentiviral Particle

Product data:

Product Type:	Lentiviral Particles
Product Name:	Bonzo (CXCR6) (NM_006564) Human Tagged ORF Clone Lentiviral Particle
Symbol:	Bonzo
Synonyms:	BONZO; CD186; CDw186; STRL33; TYMSTR
Mammalian Cell Selection:	None
Vector:	pLenti-C-mGFP (PS100071)
Tag:	mGFP
ACCN:	NM_006564
ORF Size:	1026 bp
ORF Nucleotide Sequence:	The ORF insert of this clone is exactly the same as(RC206517).
OTI Disclaimer:	The molecular sequence of this clone aligns with the gene accession number as a point of reference only. However, individual transcript sequences of the same gene can differ through naturally occurring variations (e.g. polymorphisms), each with its own valid existence. This clone is substantially in agreement with the reference, but a complete review of all prevailing variants is recommended prior to use. More info
OTI Annotation:	This clone was engineered to express the complete ORF with an expression tag. Expression varies depending on the nature of the gene.
RefSeq:	NM_006564.1
RefSeq Size:	1953 bp
RefSeq ORF:	1029 bp
Locus ID:	10663
UniProt ID:	O00574
Cytogenetics:	3p21.31
Domains:	7tm_1
Protein Families:	Druggable Genome, GPCR, Transmembrane

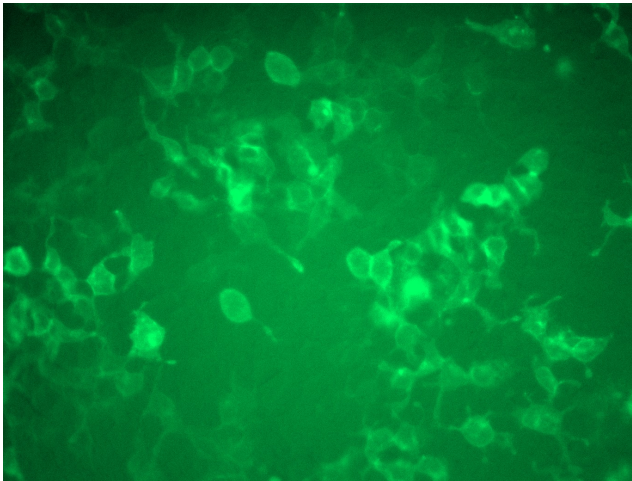

[View online »](#)

Protein Pathways: Chemokine signaling pathway, Cytokine-cytokine receptor interaction

MW: 39.3 kDa

Gene Summary: The protein encoded by this gene is a G protein-coupled receptor with seven transmembrane domains that belongs to the CXC chemokine receptor family. This family also includes CXCR1, CXCR2, CXCR3, CXCR4, CXCR5, and CXCR7. This gene, which maps to the chemokine receptor gene cluster, is expressed in several T lymphocyte subsets and bone marrow stromal cells. The encoded protein and its exclusive ligand, chemokine ligand 16 (CCL16), are part of a signalling pathway that regulates T lymphocyte migration to various peripheral tissues (the liver, spleen red pulp, intestine, lungs, and skin) and promotes cell-cell interaction with dendritic cells and fibroblastic reticular cells. CXCR6/CCL16 also controls the localization of resident memory T lymphocytes to different compartments of the lung and maintains airway resident memory T lymphocytes, which are an important first line of defense against respiratory pathogens. The encoded protein serves as an entry coreceptor used by HIV-1 and SIV to enter target cells, in conjunction with CD4. [provided by RefSeq, Aug 2020]

Product images:



[RC206517L2] was used to prepare Lentiviral particles using [TR30037] packaging kit. HEK293T cells were transduced with RC206517L2V particle to overexpress human CXCR6-mGFP fusion protein.