

Product datasheet for **RC206516**

LILRB5 (NM_001081442) Human Tagged ORF Clone

Product data:

Product Type:	Expression Plasmids
Product Name:	LILRB5 (NM_001081442) Human Tagged ORF Clone
Tag:	Myc-DDK
Symbol:	LILRB5
Synonyms:	CD85C; LIR-8; LIR8
Mammalian Cell Selection:	Neomycin
Vector:	pCMV6-Entry (PS100001)
E. coli Selection:	Kanamycin (25 ug/mL)



[View online »](#)

ORF Nucleotide Sequence:

>RC206516 ORF sequence
 Red=Cloning site Blue=ORF Green=Tags(s)

TTTTGTAATACGACTCACTATAGGGCGGCCGGGAATTCGTCGACTGGATCCGGTACCGAGGAGATCTGCC
 GCC**CGGATCGCC**

ATGACCCTCACCTCTCAGTCTGATTTGCTCGGGCTGAGTGTGGGCCAGGACTGCGTGCAGGCAG
 GCACCCTCCCAAAACCCACCCTCTGGGCTGAGCCAGCCTCTGTGATAGCTCGGGGAAGCCCGTGACCT
 CTGGTGTGAGGGGCCCTGGAGACTGAGGAGTACCGTCTGGATAAGGAGGACTCCCATGGGCCCGAAG
 AGACAGAACCCACTGGAGCCTGGAGCCAAGGCCAAGTTCCACATCCACGGTGTATGACAGTGCAG
 GGCGATACCGCTGCTACTATGAGACCCCTGCAGGCTGGTGCAGAGCCAGTGACCCCTGGAGCTGGTGGC
 GACAGGATTCTATGCAGAACCCACTCTTTAGCCCTGCCGAGTCTGTGGTGGCCCTCAGGAGGAAATGTG
 ACCCTCCAGTGTGATACACTGGACGGACTTCTCACGTTTGTCTTGTGAGGAAGAACAAGCTCCCA
 GGACCCTGTACTACAGAAGCTCCCAAGGGCCATCCAGGCCCTGTTCCCTGTGGTCCCGTGACCC
 CAGCTGCAGGTGGAGGTTAGATGCTATTACTATTACAGGAAAAACCCCTCAGGTGTGGTGAACCCAGT
 GACCTCCTGGAGATTCTGGTCCCAGGCGTGTCTAGGAAGCCCTCCCTCCTGATCCCGCAGGGCTCTGTGC
 TGGCCCGCGGAGGCAGCCTGACCCTGCAGTGTGCTGCTGATGTCGGCTATGACATATTGTTCTGTACAA
 GGAGGGGGAACATGACCTCGTCCAGGGCTCTGGCCAGCAGCCCCAGGCTGGGCTCTCCAGGCCAACTTC
 ACCCTGGGCCCTGTGAGCCGCTCCCACGGGGCCAGTACAGATGCTACGGTGCACACAACCTCTCCCTTA
 GGTGGTGGCCCCCAGCGACCCCTGGACATCCTGATCGCAGGACTGATCCCTGACATACCCGCCCTCTC
 GGTGCAGCCGGCCCCAAGGTGGCTCAGGAGAGAAGTACCCCTGCTGTGTCAGTATGGCATCAGATA
 GACACTTTCTTTTGACCAAGGAGGGGGCAGCCATCCCCGCTGTGCTAAAGTCAAAGTACCAGTCTT
 ATAGACACCAGGCTGAATCTCCATGAGTCTGTGACCTCAGCCAGGGTGAACCTACCGATGCTACAG
 CGCAATCAGTCTACCCCTACCTGCTGTCCAGCCCTAGTTACCCCGAGGAGCTCGTGGTCTCAGGACCC
 TCTGGGGATCCCAGCCTCTCACCTACAGCTCCACCCACACCTGGCCCTGAGGACCAGCCCTCACCC
 CCACGGGTTGGATCCCCAGAGTGGTCTGGGAAGGCACCTGGGGTTGTGACTGGGGTCTCAGTGGCCTT
 CGTCTGCTGCTGTTCTCTCTCTCTCTCTCTCTCCGACATCGGCATCAGAGCAAACACAGGACATCG
 GCCATTTCTACCGTCTGCAGGGGCTGCGGGCCAGAGCCCAAGGACCAGGGCTGCAGAAGAGGGCCA
 GCCCAGTTGCTGACATCCAGGAGGAAATCTCAATGCTGCCGTGAAGGACACACAGCCCAAGGACGGGT
 GGAGATGGATGCTCGGGTCTGCATCTGAAGCCCCCAGGATGTGACCTACGCCAGCTACACAGCTTG
 ACCCTCAGACGGGAGGCAACTGAGCCTCTCCATCCCAGGAAAGGGAACCTCCAGCTGAACCCAGCATCT
 ACGCCCCCTGGCCATCCAC

ACGCGTACGCGGCCGCTCGAGCAGAAACTCATCTCAGAAGAGGATCTGGCAGCAAATGATATCCTGGATT
 ACAAGGATGACGACGATAAGGTTTAA

Protein Sequence:

>RC206516 protein sequence
 Red=Cloning site Green=Tags(s)

MTLTLVLIICLGLSVGPRTCVQAGTLPKPTLWAEPASVIARGKPVTLWCQGPLETEEYRLDKEGLPWARK
 RQNPLEPGAKAKFHIPSTVYDSAGRYRCYYETPAGWSEPSDPLELVATGFYAEPTELLALPSPVVASGGNV
 TLQCDTLDGLLTFVLVEEEQKLPRTLYSQKLPKGPSQALFPVGPVTPSCRWRFRYYYYRKNPQVWSNPS
 DLLEILVPGVSRKPSLLIPQGSVVARGGSLTLQCRSDVGYDIFVLKKEGEHDLVQSGGQQPQAGLSQANF
 TLGPVSRSHGGQYRCYGAHNLSPRWSAPSDPLDILIAGLIPDIPALSVQPGPKVASGENVTLLCQSWHQI
 DTFLLTKEGAAHPPLCLKSKYQSYRHQAEFSMSPVTSAQGGTYRCYSAIRSYPYLLSSPSYPQELVVS
 GPDPSLSPTGSTPTPGPEDQPLTPTGLDQSGLGRHLGVVTGVSVAFLVLLFLLLRRHRHQS
 AHFYRPAAGPEPKDQGLQKRASPVADIQEEILNAAVKDTQPKDGVEMDARAAASEAPQDVTYAQLHSL
 TLRREATEPPPSQEREPPAEPPIYAPLAIH

TRTRPLEQKLISEEDLAANDILDYKDDDDKV

Chromatograms:

https://cdn.origene.com/chromatograms/mk6804_c07.zip

Restriction Sites: SgfI-MluI

Cloning Scheme:



ACCN: NM_001081442

ORF Size: 768 bp

OTI Disclaimer: The molecular sequence of this clone aligns with the gene accession number as a point of reference only. However, individual transcript sequences of the same gene can differ through naturally occurring variations (e.g. polymorphisms), each with its own valid existence. This clone is substantially in agreement with the reference, but a complete review of all prevailing variants is recommended prior to use. [More info](#)

OTI Annotation: This clone was engineered to express the complete ORF with an expression tag. Expression varies depending on the nature of the gene.

Components: The ORF clone is ion-exchange column purified and shipped in a 2D barcoded Matrix tube containing 10ug of transfection-ready, dried plasmid DNA (reconstitute with 100 ul of water).

- Reconstitution Method:
1. Centrifuge at 5,000xg for 5min.
 2. Carefully open the tube and add 100ul of sterile water to dissolve the DNA.
 3. Close the tube and incubate for 10 minutes at room temperature.
 4. Briefly vortex the tube and then do a quick spin (less than 5000xg) to concentrate the liquid at the bottom.
 5. Store the suspended plasmid at -20°C. The DNA is stable for at least one year from date of shipping when stored at -20°C.

RefSeq: [NM_001081442.3](#)

RefSeq Size: 2282 bp

RefSeq ORF: 1776 bp

Locus ID: 10990

UniProt ID: [O75023](#)

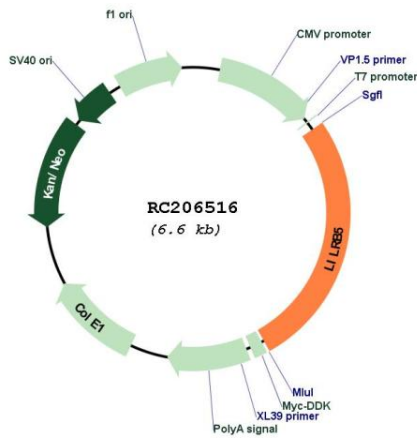
Cytogenetics: 19q13.42

Protein Families: Transmembrane

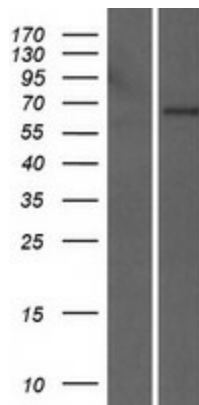
MW: 64.1 kDa

Gene Summary: This gene is a member of the leukocyte immunoglobulin-like receptor (LIR) family, which is found in a gene cluster at chromosomal region 19q13.4. The encoded protein belongs to the subfamily B class of LIR receptors which contain two or four extracellular immunoglobulin domains, a transmembrane domain, and two to four cytoplasmic immunoreceptor tyrosine-based inhibitory motifs (ITIMs). Several other LIR subfamily B receptors are expressed on immune cells where they bind to MHC class I molecules on antigen-presenting cells and inhibit stimulation of an immune response. Multiple transcript variants encoding different isoforms have been found for this gene. [provided by RefSeq, Jul 2008]

Product images:



Circular map for RC206516



Western blot validation of overexpression lysate (Cat# [LY421152]) using anti-DDK antibody (Cat# [TA50011-100]). Left: Cell lysates from untransfected HEK293T cells; Right: Cell lysates from HEK293T cells transfected with RC206516 using transfection reagent MegaTran 2.0 (Cat# [TT210002]).