

Product datasheet for **RC206511**

SOX30 (NM_178424) Human Tagged ORF Clone

Product data:

Product Type:	Expression Plasmids
Product Name:	SOX30 (NM_178424) Human Tagged ORF Clone
Tag:	Myc-DDK
Symbol:	SOX30
Mammalian Cell Selection:	Neomycin
Vector:	pCMV6-Entry (PS100001)
E. coli Selection:	Kanamycin (25 ug/mL)



[View online »](#)

**ORF Nucleotide
Sequence:**

>RC206511 ORF sequence
 Red=Cloning site Blue=ORF Green=Tags(s)

TTTTGTAATACGACTCACTATAGGGCGGCCGGGAATTCGTCGACTGGATCCGGTACCGAGGAGATCTGCC
 GCC**CGGATCGCC**

ATGGAGAGAGCCAGACCCGAGCCGCCCTCAGCCGCGCCGTTGCGTCCCCTCCGCCCCCGCTGCCGG
 TCGAGGGCACCTCCTTTGGGCAGCAGCCATGGAGCCCCCTCCGTCGTCTCCACACTGAGCGCGGACG
 CAGTGCACCTTGGCCTCGTCGTGCGGGGAGGCAGTGGCGTCCGGCTTACAGCCCAGGTCGGCGGCTG
 CTGCAGGTGAAGCCAGAGCAGGTGTTGCTGCTACCACAGCCTCAGGCCAGAACGAGGAAGCCGCTGCCT
 CGTCCGCGCAGGCGGGCTGTTGCAGTTCAGGCCGACCTGCGGCTCCTGCAGCCGCCGACAGCGTCAGA
 CGGCGCCACCTCCAGGCCGAGTTCACCCGGTGCAGCCCTGGCGTGCATGTCAAGGCCAAGAAGCAG
 AAGCTGGGGCCAGCCTGGATCAGTCAGTGGGGCCTCGAGGGCCGTCGAAACCGGTCTAGAGCCTCCA
 GGGTGGTCAAGTTGGAAGCCCCGGGCCGCCCTCGGCTACTTCCGAGGGGACGAGAAGGCCAAGCTGGA
 GCGGAGGAGTTCATGAGAGACTCGATGCAAGGGGGGAGGCAAAAGCCGGCAGCCATCCGAGAAGGT
 GTGATCAAAACGAGGAACCCGAGAGACTCCTCGAGGACTGCAGGCTCGGCGCGGAGCCCGCTCCAATG
 GCCTGGTTCATGGCAGCGCGGAGGTCATCTTGGCCCAACGTCCGGTGCCTTTGGGCCGACCCAGCAAGA
 CCTTAGGATCCCTTTGACGCTCCACACGGTCCCCCTGGGGCCGGATCCAGTTTCAGGGAGCTCCGCT
 TCAGAGCTGATAAGATTGACCAAGTCCCCCTGACACCAAGTGCCTACTAAATGCAGTCCCTACTGGAGC
 CTTCTGTAATAAATTGAAACCAAGATGTCCCGCTCACCGTGTGCCCTCAGATGCAGGCATACCAGATAC
 TCCCTTCAAGTAAAGACAGAAATGGTCATGTGAAGCAGCCATGAACGATTTATGGTTTGGGCAAGGATC
 CACCGACCAAGTACTAGCCAAAGCTAACCCAGCAGCAACAATGCAGAAATCAGTGTCCAGCTTGGGTTAG
 AGTGGAAACAACCTTGTGAAGAACAAGAAACCCCTATTACGATGAAGCACAAGGATTAAGGAAAAGCA
 CAGAGAGGAATTTCTGGTTGGGTTTATCAGCCTCGTCCAGGGAAGCGAAAACGATTCCTCTAAGTGTT
 TCCAATGTATTTCTGGTACCACAAGAATATCATCTCTACAAATCCTACAACAGTTTATCCTTACCCT
 CACCTACGTACTCTGTGGTAATCCAGCCTACAGAATCCATCACTCATCCAGTTGGTAAACCTCACCC
 TGCTATCCAGCTGCCACACCTGCAGTCCAGAGCCCAAGCCCTGTACACTTTTCCAGCCAGCGTCTCC
 AGTGTGCTCAGGTGGCTGTCCAGGATCCAAGTCTACCTGTCTATCCAGCACTCCACCCCAACGCTTTA
 CTGGGCCCTCCCAACAGACTCATCAGCTGCATTCTGAAGCCACTCACACTGTGAAGCAACCCACTCC
 TGTCTCTAGAGAGCGCAACAGGATTTCAAGTGTGCAAGTACTGCCATGCCAGATTTGCAACTTCG
 ACCATCCAACCTCCTAGGGAGTATCCAGCGTTTCCCCTTGTCCAGAAGTGTCCAATCCCCAGGCTT
 CTCCCATTCCACACCCACATGTCTACCAGCCCCCTCCCCTTGGCCATCCAGCCACACTGTTCCGGGACCC
 ACCAAGATTCTCTTTTATCACCCTTACTTCTACCCGGACCTCACTACTTCCCATCAAGTACATGCCCT
 TACAGTCGGCCTCCCTTTGGCTATGAAATTTTCCGAGTTCAATGCCAGAATGCCTTAGTTATTATGAAG
 ACAGGTACCCAAAACATGAGGGTATCTTTCAACTTTAAATAGAGACTATTCTTTTAGAGACTACTCAAG
 TGAATGCACACACAGTGAATAATCTCGGAGTTGTGAGAACATGAATGGAACCTTCTACTATAACAGTCAT
 AGCCACAGTGGGGAAGAAAACCTAAACCCTGTGCCTCAGCTGGACATTGGAACCTTGGAGAATGTCTTCA
 CAGCCCCGACATCAACTCCTTCTAGCATCCAGCAAGTCAATGTACCCGACAGTGTGAGGAGGAAGAAGA
 AAAAGTGCTCAGGGATTTA

ACGCGTACGCGGCCGCTCGAGCAGAAACTCATCTCAGAAGAGGATCTGGCAGCAATGATATCCTGGATT
 ACAAGGATGACGACGATAAGGTTTAA

Protein Sequence: >RC206511 protein sequence
 Red=Cloning site Green=Tags(s)

```
MERARPEPPPQRPLRPAPPPLPVEGTSFWAAAMEPPSSPTLSAAASATLASSCGEAVASGLQPAVRRLLQVKPEQVLLLPQPAQNEEAASSAQRLLQFRPDLRLLQPPTASDGATSRPELHPVQPLALHVKAKKQKLGPSLDQSVGPRGAVETGPRASRVVKEGPGPALGYFRGDEKGLAEAEVMRDSMQGGAGKSPAAREGVIKTEEPERLLEDRCRLGAEPASNGLVHGSAEVLAPTSGAFGPHQQDLRIPLTLHTVPPGARIQFQGAPPSELIRLTKVPLTPVPTKMQLLEPSVKIETKDVPLTVLPSDAGIPDTPFSKDRNGHVKRPMAFMVWARIHRPALAKANPAANNAEISVQLGLEWNKLSEEQKKPYDEAQKIKEKHREEFFGWVYQPRPGKRKRFPLSVSNVFSGTTKNIISTNPITYPYRSPTYSVVIPS LQNPITHPVGETSPAIQLPTPAVQSPSPVTLFQPSVSSAAQVAVQDPSLPVYPALPPQRF TGPSQTDTHQLHSEATHVKQPTVLSANRISSSASTAHARFATSTIQPPREYSSVSPCRSAPIQASPIPHPHVYQPPPLGHPATLFGTPPRFSFHPYFLPGPHYFSSSTCPYSRPPFGYGNFPSSMPECLSYEDRYPKHEGIFSTLNRDYSFRDYSSECTHSENSRSCENMNGTSYYNSSHSGEENLNVPVQLDIGTLENVFTAPTSTPSSIQQVNVTDSEEEEEKVLRLD
```

TRTRPLEQKLISEEDLAANDILDYKDDDDKV

Chromatograms: https://cdn.origene.com/chromatograms/mk6694_c01.zip

Restriction Sites: Sgfl-MluI

Cloning Scheme:

Cloning sites used for ORF Shuttling:



* The last codon before the Stop codon of the ORF

ACCN: NM_178424

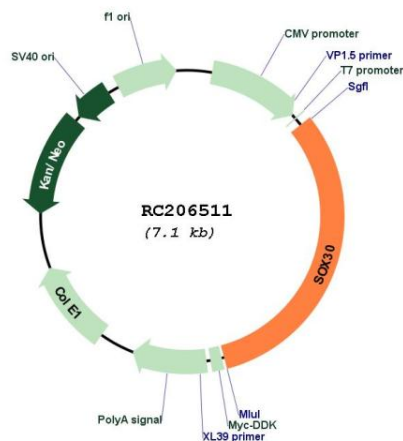
ORF Size: 2259 bp

OTI Disclaimer: The molecular sequence of this clone aligns with the gene accession number as a point of reference only. However, individual transcript sequences of the same gene can differ through naturally occurring variations (e.g. polymorphisms), each with its own valid existence. This clone is substantially in agreement with the reference, but a complete review of all prevailing variants is recommended prior to use. [More info](#)

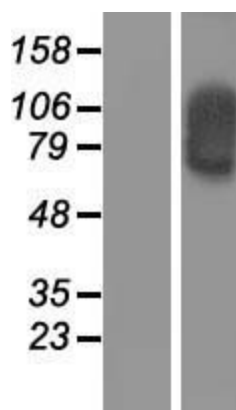
OTI Annotation: This clone was engineered to express the complete ORF with an expression tag. Expression varies depending on the nature of the gene.

- Components:** The ORF clone is ion-exchange column purified and shipped in a 2D barcoded Matrix tube containing 10ug of transfection-ready, dried plasmid DNA (reconstitute with 100 ul of water).
- Reconstitution Method:**
1. Centrifuge at 5,000xg for 5min.
 2. Carefully open the tube and add 100ul of sterile water to dissolve the DNA.
 3. Close the tube and incubate for 10 minutes at room temperature.
 4. Briefly vortex the tube and then do a quick spin (less than 5000xg) to concentrate the liquid at the bottom.
 5. Store the suspended plasmid at -20°C. The DNA is stable for at least one year from date of shipping when stored at -20°C.
- RefSeq:** [NM_178424.1](#), [NP_848511.1](#)
- RefSeq Size:** 3280 bp
- RefSeq ORF:** 2262 bp
- Locus ID:** 11063
- UniProt ID:** [O94993](#)
- Cytogenetics:** 5q33.3
- MW:** 81.9 kDa
- Gene Summary:** This gene encodes a member of the SOX (SRY-related HMG-box) family of transcription factors involved in the regulation of embryonic development and in the determination of the cell fate. The encoded protein acts as a transcriptional regulator when present in a complex with other proteins. It can activate p53 transcription to promote tumor cell apoptosis in lung cancer. The protein may be involved in the differentiation of developing male germ cells. Alternative splicing of this gene results in multiple transcript variants. A related pseudogene has been identified on chromosome 5. [provided by RefSeq, Apr 2015]

Product images:



Circular map for RC206511



Western blot validation of overexpression lysate (Cat# [LY405948]) using anti-DDK antibody (Cat# [TA50011-100]). Left: Cell lysates from untransfected HEK293T cells; Right: Cell lysates from HEK293T cells transfected with RC206511 using transfection reagent MegaTran 2.0 (Cat# [TT210002]).