

Product datasheet for **RC206510**

TSG6 (TNFAIP6) (NM_007115) Human Tagged ORF Clone

Product data:

Product Type:	Expression Plasmids
Product Name:	TSG6 (TNFAIP6) (NM_007115) Human Tagged ORF Clone
Tag:	Myc-DDK
Symbol:	TSG6
Synonyms:	TSG-6; TSG6
Mammalian Cell Selection:	Neomycin
Vector:	pCMV6-Entry (PS100001)
E. coli Selection:	Kanamycin (25 ug/mL)
ORF Nucleotide Sequence:	>RC206510 ORF sequence Red =Cloning site Blue =ORF Green =Tags(s)

TTTTGTAAACGACTCACTATAGGGCGGCCGGAATTCGTCGACTGGATCCGGTACCGAGGAGATCTGCC
 GCCCGATCGCC

ATGATCATCTTAATTTACTTATTTCTCTTGCTATGGGAAGACACTCAAGGATGGGGATTCAAGGATGGAA
 TTTTTCATAACTCCATATGGCTTGAACGAGCAGCCGGTGTGTACACAGAGAAGCACGGTCTGGCAAATA
 CAAGCTCACCTACGCAGAAGCTAAGGCGGTGTGTGAATTTGAAGCGGCCATCTCGCAACTTACAAGCAG
 CTAGAGGCAGCCAGAAAAATTGGATTTTCATGTCTGTGCTGCTGGATGGATGGCTAAGGGCAGAGTTGGAT
 ACCCCATTGTGAAGCCAGGGCCCAACTGTGGATTTGAAAACTGGCATTATTGATTATGGAATCCGTCT
 CAATAGGAGTGAAAGATGGGATGCCTATTGCTACAACCCACACGCAAAGGAGTGTGGTGGCGTCTTTACA
 GATCCAAAGCAAATTTTAAATCTCCAGGCTTCCCAAATGAGTACGAAGATAACCAAATCTGCTACTGGC
 ACATTAGACTCAAGTATGGTCAGCGTATTCACCTGAGTTTTTTAGATTTTGACCTTGAAGATGACCCAGG
 TTGCTTGGCTGATTATGTTGAAATATATGACAGTTACGATGATGTCCATGGCTTTGTGGGAAGATACTGT
 GGAGATGAGCTTCCAGATGACATCATCAGTACAGGAAATGTCATGACCTTGAAGTTTCTAAGTGATGCTT
 CAGTGACAGCTGGAGTTTCCAAATCAAATATGTTGCAATGGATCCTGTATCCAAATCCAGTCAAGGAAA
 AAATACAAGTACTACTTCTACTGGAAATAAACTTTTGTAGCTGGAAGATTTAGCCACTTA

ACGCGTACGCGGCCGCTCGAGCAGAACTCATCTCAGAAGAGGATCTGGCAGCAAATGATATCCTGGATT
ACAAGGATGACGACGATAAGGTTTAA


[View online »](#)

Protein Sequence: >RC206510 protein sequence
 Red=Cloning site Green=Tags(s)

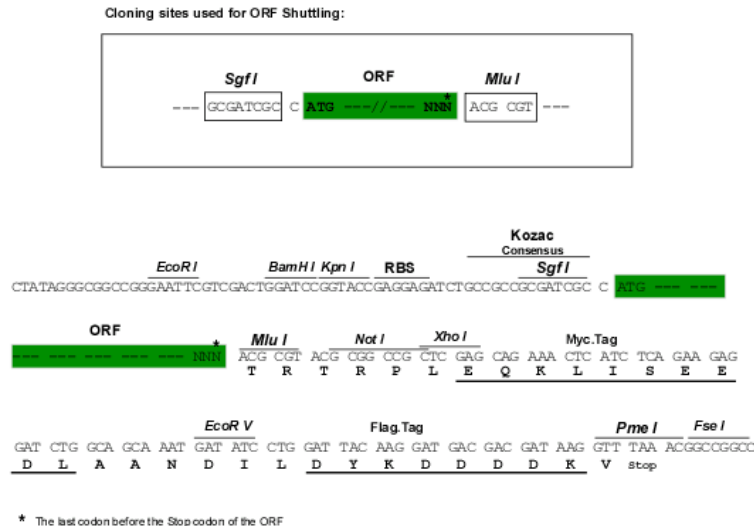
MIIILYLFLLWEDTQGWGFKDGIFHNSIWLERAAGVYHREARSGKYKLTAEAKAVCEFEGLHATYKQ
 LEAARKIGFHVCAAGWMAKGRVGYPIVKPGPNCGFGKTGIIDYGIRLNRSERWDAYCYNPHAKECGGVFT
 DPKQIFKSPGFPNEYEDNQICYWHIRLKYGQRIHLSFLDFDLEDDPGCLADYVEIYDSYDDVHGFVGRYC
 GDELDDIISTGNVMTLKLFLSDASVTAGGFQIKYVAMPVPVSKSSQGKNTSTTSTGNKNFLAGRFSLH

TRTRPLEQKLISEEDLAANDILDYKDDDDKV

Chromatograms: https://cdn.origene.com/chromatograms/mk6016_b05.zip

Restriction Sites: SgfI-MluI

Cloning Scheme:



ACCN: NM_007115

ORF Size: 831 bp

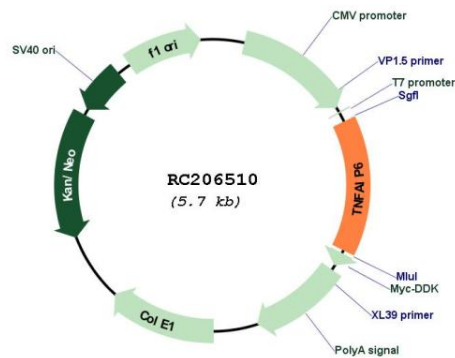
OTI Disclaimer: The molecular sequence of this clone aligns with the gene accession number as a point of reference only. However, individual transcript sequences of the same gene can differ through naturally occurring variations (e.g. polymorphisms), each with its own valid existence. This clone is substantially in agreement with the reference, but a complete review of all prevailing variants is recommended prior to use. [More info](#)

OTI Annotation: This clone was engineered to express the complete ORF with an expression tag. Expression varies depending on the nature of the gene.

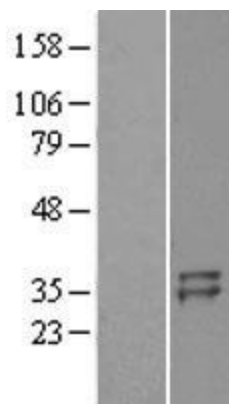
Components: The ORF clone is ion-exchange column purified and shipped in a 2D barcoded Matrix tube containing 10ug of transfection-ready, dried plasmid DNA (reconstitute with 100 ul of water).

Reconstitution Method:	<ol style="list-style-type: none"> 1. Centrifuge at 5,000xg for 5min. 2. Carefully open the tube and add 100ul of sterile water to dissolve the DNA. 3. Close the tube and incubate for 10 minutes at room temperature. 4. Briefly vortex the tube and then do a quick spin (less than 5000xg) to concentrate the liquid at the bottom. 5. Store the suspended plasmid at -20°C. The DNA is stable for at least one year from date of shipping when stored at -20°C.
Note:	Plasmids are not sterile. For experiments where strict sterility is required, filtration with 0.22um filter is required.
RefSeq:	<u>NM_007115.4</u>
RefSeq Size:	1439 bp
RefSeq ORF:	834 bp
Locus ID:	7130
UniProt ID:	<u>P98066</u>
Cytogenetics:	2q23.3
Protein Families:	Druggable Genome
MW:	31.2 kDa
Gene Summary:	<p>The protein encoded by this gene is a secretory protein that contains a hyaluronan-binding domain, and thus is a member of the hyaluronan-binding protein family. The hyaluronan-binding domain is known to be involved in extracellular matrix stability and cell migration. This protein has been shown to form a stable complex with inter-alpha-inhibitor (I alpha I), and thus enhance the serine protease inhibitory activity of I alpha I, which is important in the protease network associated with inflammation. This gene can be induced by proinflammatory cytokines such as tumor necrosis factor alpha and interleukin-1. Enhanced levels of this protein are found in the synovial fluid of patients with osteoarthritis and rheumatoid arthritis.[provided by RefSeq, Dec 2010]</p>

Product images:



Circular map for RC206510



Western blot validation of overexpression lysate (Cat# [LY402092]) using anti-DDK antibody (Cat# [TA50011-100]). Left: Cell lysates from untransfected HEK293T cells; Right: Cell lysates from HEK293T cells transfected with RC206510 using transfection reagent MegaTran 2.0 (Cat# [TT210002]).