

Product datasheet for **RC206508**

Adenosine A3 Receptor (ADORA3) (NM_000677) Human Tagged ORF Clone

Product data:

Product Type:	Expression Plasmids
Product Name:	Adenosine A3 Receptor (ADORA3) (NM_000677) Human Tagged ORF Clone
Tag:	Myc-DDK
Symbol:	Adenosine A3 Receptor
Synonyms:	A3AR
Mammalian Cell Selection:	Neomycin
Vector:	pCMV6-Entry (PS100001)
E. coli Selection:	Kanamycin (25 ug/mL)
ORF Nucleotide Sequence:	>RC206508 ORF sequence Red=Cloning site Blue=ORF Green=Tags(s)

TTTTGTAATACGACTCACTATAGGGCGCCGGGAATTCGTCGACTGGATCCGGTACCGAGGAGATCTGCC
GCC**CGGATCGCC**

ATGCCCAACAACAGCACTGCTCTGTCATTGGCCAATGTTACCTACATCACCATGGAAATTTTCATTGGAC
TCTGCGCCATAGTGGCAACGTGCTGGTCATCTGCGTGGTCAAGCTGAACCCAGCCTGCAGACCACCAC
CTTCTATTTTCATTGTCTCTAGCCCTGGCTGACATTGCTGTTGGGGTGTGGTCATGCCTTTGGCCATT
GTTGTCAGCCTGGGCATCACAATCCACTTCTACAGCTGCCTTTTATGACTTGCCTACTGCTTATCTTTA
CCCAGCCTCCATCATGTCTTGTGGCCATCGCTGTGGACCGATACTTGCGGTCAAGCTTACCGTCAG
ATACAAGAGGGTCACCACTCACAGAAGAATATGGCTGGCCCTGGCCCTTTGCTGGCTGGTGTCAATCCTG
GTGGGATTGACCCCATGTTTGGCTGGAACATGAAACTGACCTCAGAGTACCACAGAAATGTCACCTTCC
TTTCATGCCAATTTGTTCCGTCATGAGAATGGACTACATGGTATACTTCAGCTTCTCACCTGGATTTT
CATCCCCCTGGTTGTCATGTGCGCCATCTATCTTGACATCTTTTACATCATTGGAAACAACTCAGTCTG
AACTTATCTAACTCCAAAGAGACAGGTGCATTTTATGGACGGGAGTTCAAGACGGCTAAGTCTTGTTC
TGGTCTTTTCTGTTTGTCTGTGTCATGGCTGCCTTTATCTATCATCAACTGCATCATCTACTTTAATGG
TGAGGTACCACAGCTTGTGCTGTACATGGGCATCCTGCTGTCCCATGCCAACTCCATGATGAACCCATC
GTCTATGCCTATAAAATAAAGAAGTTCAAGGAAACCTACCTCTTGATCCTCAAAGCCTGTGTGGTCTGCC
ATCCCTCTGATTCTTTGGACACAAGCATTGAGAAGAATTCTGAG

ACGCGTACGCGGCCGCTCGAGCAGAAACTCATCTCAGAAGAGGATCTGGCAGCAAATGATATCCTGGATT
ACAAGGATGACGACGATAAGGTTTAA



[View online »](#)

Protein Sequence: >RC206508 protein sequence
Red=Cloning site Green=Tags(s)

MPNNSTALSLANVTYITMEIFIGLCAIVGNVLVICVVKLNPSLQTTTFYFIVSLALADIAGVGLVMPLAI
 VVSLGITIHFYSLFMTCLLLIFTHASIMSLLAIAVDRLRVKLVTRYKRVTTTHRRWLALGLCWLVSFL
 VGLTPMFGWNMMLTSEYHRNVTFLSCQFVSVMRMDYMYVFSFLTWIFIPLVVMCAIYLDIFYIIRNKL
 NLSNSKETGAFYGREFKTAKSLFLVFLFALSWLPLSIINCIYFNGEVPLVLYMGILLSHANSMMNPI
 VYAYKIKKFKETYLLILKACVVCHPDSLDTSEIKNSE

TRTRPLEQKLISEEDLAANDILDYKDDDDKV

Chromatograms: https://cdn.origene.com/chromatograms/mk6192_d05.zip

Restriction Sites: SgfI-MluI

Cloning Scheme:



ACCN: NM_000677

ORF Size: 954 bp

OTI Disclaimer: The molecular sequence of this clone aligns with the gene accession number as a point of reference only. However, individual transcript sequences of the same gene can differ through naturally occurring variations (e.g. polymorphisms), each with its own valid existence. This clone is substantially in agreement with the reference, but a complete review of all prevailing variants is recommended prior to use. [More info](#)

OTI Annotation: This clone was engineered to express the complete ORF with an expression tag. Expression varies depending on the nature of the gene.

Components: The ORF clone is ion-exchange column purified and shipped in a 2D barcoded Matrix tube containing 10ug of transfection-ready, dried plasmid DNA (reconstitute with 100 ul of water).

Reconstitution Method:

1. Centrifuge at 5,000xg for 5min.
2. Carefully open the tube and add 100ul of sterile water to dissolve the DNA.
3. Close the tube and incubate for 10 minutes at room temperature.
4. Briefly vortex the tube and then do a quick spin (less than 5000xg) to concentrate the liquid at the bottom.
5. Store the suspended plasmid at -20°C. The DNA is stable for at least one year from date of shipping when stored at -20°C.

Note: Plasmids are not sterile. For experiments where strict sterility is required, filtration with 0.22um filter is required.

RefSeq: [NM_000677.4](#)

RefSeq Size: 2261 bp

RefSeq ORF: 957 bp

Locus ID: 140

UniProt ID: [P33765](#)

Cytogenetics: 1p13.2

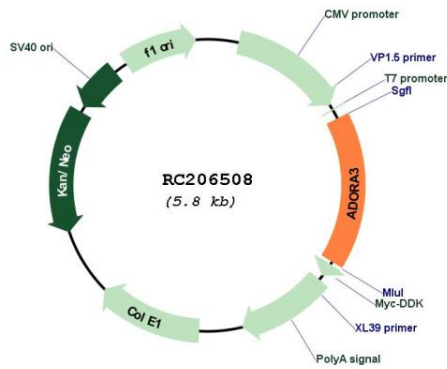
Protein Families: Druggable Genome, GPCR, Transmembrane

Protein Pathways: Neuroactive ligand-receptor interaction

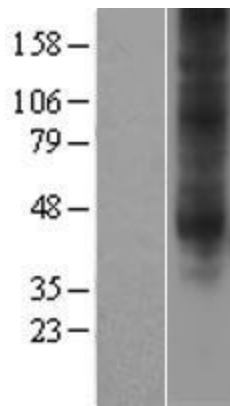
MW: 36.2 kDa

Gene Summary: This gene encodes a protein that belongs to the family of adenosine receptors, which are G-protein-coupled receptors that are involved in a variety of intracellular signaling pathways and physiological functions. The receptor encoded by this gene mediates a sustained cardioprotective function during cardiac ischemia, it is involved in the inhibition of neutrophil degranulation in neutrophil-mediated tissue injury, it has been implicated in both neuroprotective and neurodegenerative effects, and it may also mediate both cell proliferation and cell death. Alternative splicing results in multiple transcript variants. This gene shares its 5' terminal exon with some transcripts from overlapping GeneID:57413, which encodes an immunoglobulin domain-containing protein. [provided by RefSeq, Nov 2014]

Product images:



Circular map for RC206508



Western blot validation of overexpression lysate (Cat# [LY400224]) using anti-DDK antibody (Cat# [TA50011-100]). Left: Cell lysates from untransfected HEK293T cells; Right: Cell lysates from HEK293T cells transfected with RC206508 using transfection reagent MegaTran 2.0 (Cat# [TT210002]).