

Product datasheet for RC206505

GPR182 (NM_007264) Human Tagged ORF Clone

Product data:

Product Type:	Expression Plasmids
Product Name:	GPR182 (NM_007264) Human Tagged ORF Clone
Tag:	Myc-DDK
Symbol:	GPR182
Synonyms:	7TMR; ADMR; AM-R; AMR; G10D; gamrh; hrhAMR; L1-R
Mammalian Cell Selection:	Neomycin
Vector:	pCMV6-Entry (PS100001)
E. coli Selection:	Kanamycin (25 ug/mL)
ORF Nucleotide Sequence:	>RC206505 ORF sequence Red=Cloning site Blue=ORF Green=Tags(s)

TTTTGTAATACGACTCACTATAGGGCGGCCGGAATTCGTCGACTGGATCCGGTACCGAGGAGATCTGCC
GCC**CGATCGCC**

ATGTCAGTGAAACCCAGCTGGGGCCTGGCCCCTCGGAGGGGGTACCGCAGTGCCTACCAGTGACCTTG
GAGAGATCCACAACCTGGACCGAGCTGCTTGACCTTTCAACCACACTTTGTCTGAGTGCCACGTGGAGCT
CAGCCAGAGCACCAAGCGCGTGGTCTCTTTGCCCTCTACCTGGCCATGTTTGTGGTTGGGCTGGTGGAG
AACCTCCTGGTGATATGCGTCAACTGGCGGGCTCAGGCCGGCAGGGCTGATGAACCTCTACATCTCTCA
ACATGGCCATCGGGACCTGGGCATTGTCTGTCTCTGCCGTGGATGCTGGAGGTCAGCTGGACTA
CACCTGGCTCTGGGGCAGCTTCTCTGCCGCTTCACTCACTACTTCTACTTTGTCAACATGTATAGCAGC
ATCTTCTCTCTGGTGTGCCTCAGTGTGCACCGCTATGTCACCCCTACCAGCGCCTCCCCCTCTGGCAGC
GTTACCAGCACCGAGTGCGGCGGGCCATGTGTGCAGGCATCTGGGTCTCTCGGCCATCATCCCCTGCC
TGAGGTGGTCCACATCCAGCTGGTGGAGGGCCCTGAGCCCATGTGCCTTTCATGGCACCTTTTGAACG
TACAGCACCTGGGCCCTGGCGGTGGCCCTGTCCACCACCATCTGGGCTTCTCTGCTGCCCTTCCCTCTCA
TCACAGTCTTCAATGTGCTGACAGCCTGCCGGCTGCGGCAGCCAGGACAACCAAGAGCCGGCGCCACTG
CCTGCTGCTGTGCGCCTACGTGGCGTCTTTGTGTCATGTGCTGGCTGCCCTATCATGTGACCCTGCTGCTG
CTCACACTGCATGGGACCCACATCTCCCTCCACTGCCACCTGGTCCACCTGCTCTACTTCTCTATGATG
TCATTGACTGCTTCCATGCTGCACTGTGTCAATCAACCCATCCTTTACAACCTTCTCAGCCCACTT
CCGGGGCCGGCTCCTGAATGCTGTAGTCCATTACCTTCTTAAGGACCAGACCAAGCGGGACATGCGCC
TCTTCTCTCTGTTCCACCCAGCATTCCATCATCATACCAAGGGTGATAGCCAGCCTGCTGCAGCAG
CCCCCACCCTGAGCCAAGCCTGAGCTTTCAGGCACACCATTTGCTTCCAATACTTCCCCATCTCTCC
CACTCAGCCTCTTACACCAGC

ACGCGTACGCGGCCGCTCGAGCAGAACTCATCTCAGAAGAGGATCTGGCAGCAAATGATATCTGGATT
ACAAGGATGACGACGATAAGGTTTAA



Protein Sequence: >RC206505 protein sequence
Red=Cloning site Green=Tags(s)

MSVKPSWGPSPSEGVTAVPTSDLGEIHNWTELLDLFNHTLSECHVELSQSTKRVLVLFALYLAMFVVLVE
 NLLVICVNWGRSGRAGLMNLYILNMAIADLGIVLSLPVWMLEVTLDTWLVWGSFSCRFTHYFYFVNMYS
 IFFLVCLSVDRYVTLTSASPSWQRYQHRVRRAMCAGIWL SAI IPLPEVVHIQL VEGPEPMCLFMAPPET
 YSTWALAVALSTTILGFLLPFLITVFNVL TACRLRQPGQPKSRRHCLLLCAYVAVFVMCWLPYHVTL
 LLL LTLHGTHISLHCHLVHLLYFFYDVIDCF SMLHCVINPILYNFLSPHFRGRLNNAVVHYLPKDQTKAGTCA
 SSSSCSTQHSIIITKGDSPAAAAPHPEPSLSFQAHHLLPNTSPISTQPLTPS

TRTRPLEQKLISEEDLAANDILDYKDDDDKV

Chromatograms: https://cdn.origene.com/chromatograms/mk6017_e04.zip

Restriction Sites: SgfI-MluI

Cloning Scheme:



* The last codon before the Stop codon of the ORF

ACCN: NM_007264

ORF Size: 1212 bp

OTI Disclaimer: The molecular sequence of this clone aligns with the gene accession number as a point of reference only. However, individual transcript sequences of the same gene can differ through naturally occurring variations (e.g. polymorphisms), each with its own valid existence. This clone is substantially in agreement with the reference, but a complete review of all prevailing variants is recommended prior to use. [More info](#)

OTI Annotation: This clone was engineered to express the complete ORF with an expression tag. Expression varies depending on the nature of the gene.

Components: The ORF clone is ion-exchange column purified and shipped in a 2D barcoded Matrix tube containing 10ug of transfection-ready, dried plasmid DNA (reconstitute with 100 ul of water).

Reconstitution Method:

1. Centrifuge at 5,000xg for 5min.
2. Carefully open the tube and add 100ul of sterile water to dissolve the DNA.
3. Close the tube and incubate for 10 minutes at room temperature.
4. Briefly vortex the tube and then do a quick spin (less than 5000xg) to concentrate the liquid at the bottom.
5. Store the suspended plasmid at -20°C. The DNA is stable for at least one year from date of shipping when stored at -20°C.

RefSeq: [NM_007264.4](#)

RefSeq Size: 1620 bp

RefSeq ORF: 1215 bp

Locus ID: 11318

UniProt ID: [O15218](#)

Cytogenetics: 12q13.3

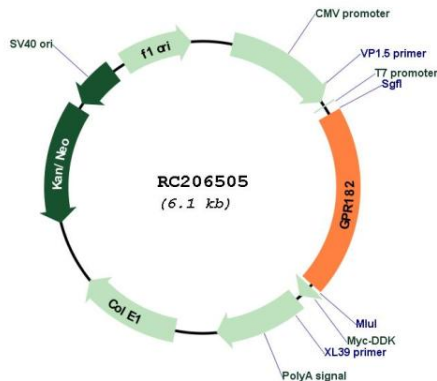
Domains: 7tm_1

Protein Families: Druggable Genome, GPCR, Transmembrane

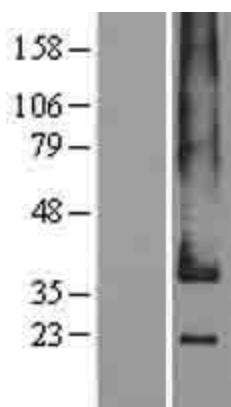
MW: 45.3 kDa

Gene Summary: Adrenomedullin is a potent vasodilator peptide that exerts major effects on cardiovascular function. This gene encodes a seven-transmembrane protein that belongs to the family 1 of G-protein coupled receptors. Studies of the rat counterpart suggest that the encoded protein may function as a receptor for adrenomedullin. [provided by RefSeq, Jul 2008]

Product images:



Circular map for RC206505



Western blot validation of overexpression lysate (Cat# [LY402121]) using anti-DDK antibody (Cat# [TA50011-100]). Left: Cell lysates from untransfected HEK293T cells; Right: Cell lysates from HEK293T cells transfected with RC206505 using transfection reagent MegaTran 2.0 (Cat# [TT210002]).