

Product datasheet for **RC206502**

KCNE1L (KCNE5) (NM_012282) Human Tagged ORF Clone

Product data:

Product Type: Expression Plasmids
Product Name: KCNE1L (KCNE5) (NM_012282) Human Tagged ORF Clone
Tag: Myc-DDK
Symbol: KCNE1L
Synonyms: KCNE1L
Mammalian Cell Selection: Neomycin
Vector: pCMV6-Entry (PS100001)
E. coli Selection: Kanamycin (25 ug/mL)
ORF Nucleotide Sequence: >RC206502 ORF sequence
 Red=Cloning site Blue=ORF Green=Tags(s)

TTTTGTAATACGACTCACTATAGGGCGGCCGGAATTCGTCGACTGGATCCGGTACCGAGGAGATCTGCC
 GCC**CGATCGCC**

ATGAAGTCGACGAGAGCCAGCGGCTGCGAACCCCTTCTGAGCCGCCTGTTGCTCGAGCTGCACCACCGGG
 GTAATGCCAGCGGCTTGGGCGTGGCCCTCGTCCAGCATGGGCATGGGGTCTGCCTGACCCCTTCGT
 GGGCCGCGAGGTGACCAGCGCAAGGGCGACGACGCCTATCTCTACATCTGCTCATCATGATCTTCTAC
 GCCTGCTTGGCCGAGGCTCATCCTGGCTACACCCGCTCCCGTAAGCTCGTCGAGGCCAAGGACGAGC
 CGTCCCAGGCTTGCGCCGAGCACGAATGGGCCCGGGAGGCGCCCTGACCGCCGACGCCGAGGCTGCCGC
 GGGCTCCCAGGCCGAGGCCGCCAGCTTGCCCTCCGAGGGGCTGCCTGCCCTCGCCAGGGCGCTGAG
 CGGGTC

ACGCGTACGCGGCCGCTCGAGCAGAACTCATCTCAGAAGAGGATCTGGCAGCAAATGATATCCTGGATT
 ACAAGGATGACGACGATAAGGTTTAA

Protein Sequence: >RC206502 protein sequence
 Red=Cloning site Green=Tags(s)

MNCSESQRLRLLSRLLELHHRGNASGLGAGPRPSMGMGVVDPFVGVREVTSKAGDDAYLYILLIMIFY
 ACLAGGLILAYTRSRKLEAKDEPSQACAEHEWAPGGAL TADAEAAAGSQAEGRRLASEGLPALAQGAE
 RV

TRTRPLEQKLISEEDLAANDILDYKDDDDKV

Chromatograms: https://cdn.origene.com/chromatograms/mk6330_c12.zip



[View online »](#)

Restriction Sites: SgfI-MluI

Cloning Scheme:



ACCN: NM_012282

ORF Size: 426 bp

OTI Disclaimer: The molecular sequence of this clone aligns with the gene accession number as a point of reference only. However, individual transcript sequences of the same gene can differ through naturally occurring variations (e.g. polymorphisms), each with its own valid existence. This clone is substantially in agreement with the reference, but a complete review of all prevailing variants is recommended prior to use. [More info](#)

OTI Annotation: This clone was engineered to express the complete ORF with an expression tag. Expression varies depending on the nature of the gene.

Components: The ORF clone is ion-exchange column purified and shipped in a 2D barcoded Matrix tube containing 10ug of transfection-ready, dried plasmid DNA (reconstitute with 100 ul of water).

Reconstitution Method:

1. Centrifuge at 5,000xg for 5min.
2. Carefully open the tube and add 100ul of sterile water to dissolve the DNA.
3. Close the tube and incubate for 10 minutes at room temperature.
4. Briefly vortex the tube and then do a quick spin (less than 5000xg) to concentrate the liquid at the bottom.
5. Store the suspended plasmid at -20°C. The DNA is stable for at least one year from date of shipping when stored at -20°C.

RefSeq: [NM_012282.4](#)

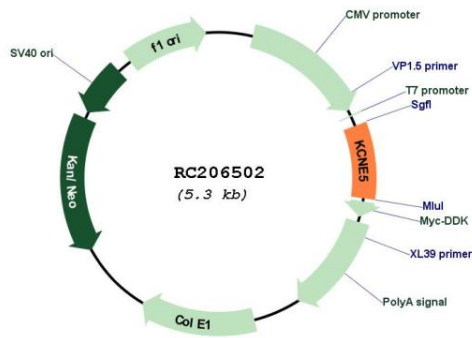
RefSeq Size: 1465 bp

RefSeq ORF: 429 bp

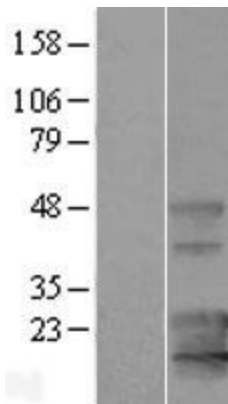
Locus ID: 23630

UniProt ID: [Q9UJ90](#)
Cytogenetics: Xq23
Protein Families: Druggable Genome, Ion Channels: Other, Transmembrane
MW: 15 kDa
Gene Summary: This gene encodes a member of a family of single pass transmembrane domain proteins that function as ancillary subunits to voltage-gated potassium channels. Members of this family affect diverse processes in potassium channel regulation, including ion selectivity, voltage dependence, and anterograde recycling from the plasma membrane. Variants of this gene are associated with idiopathic ventricular fibrillation and Brugada syndrome. [provided by RefSeq, Nov 2016]

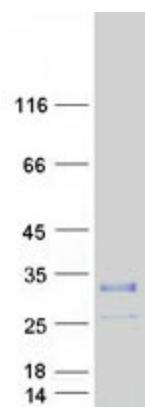
Product images:



Circular map for RC206502



Western blot validation of overexpression lysate (Cat# [LY415850]) using anti-DDK antibody (Cat# [TA50011-100]). Left: Cell lysates from untransfected HEK293T cells; Right: Cell lysates from HEK293T cells transfected with RC206502 using transfection reagent MegaTran 2.0 (Cat# [TT210002]).



Coomassie blue staining of purified KCNE5 protein (Cat# [TP306502]). The protein was produced from HEK293T cells transfected with KCNE5 cDNA clone (Cat# RC206502) using MegaTran 2.0 (Cat# [TT210002]).