

Product datasheet for **RC206498**

POMT2 (NM_013382) Human Tagged ORF Clone

Product data:

Product Type:	Expression Plasmids
Product Name:	POMT2 (NM_013382) Human Tagged ORF Clone
Tag:	Myc-DDK
Symbol:	POMT2
Synonyms:	LGMD2N; LGMDR14; MDDGA2; MDDGB2; MDDGC2
Mammalian Cell Selection:	Neomycin
Vector:	pCMV6-Entry (PS100001)
E. coli Selection:	Kanamycin (25 ug/mL)



[View online »](#)

**ORF Nucleotide
Sequence:**

>RC206498 ORF sequence
 Red=Cloning site Blue=ORF Green=Tags(s)

TTTTGTAATACGACTCACTATAGGGCGGCCGGGAATTCGTCGACTGGATCCGGTACCGAGGAGATCTGCC
 GCC**CGGATCGCC**

ATGCCCGGCCACGGGCGGAGGCTGGCAGAGTCCGAGCTGCGTCCCCGGAGGGCCGCTGTGGCCCC
 AGGCTGTAGGGCCGACGGCCGGACGTGGCCGCTGAGGCTGTGGCGGAAGCCCCAAACGGCCTGCTTG
 GGGCTCACGGCGCTTCGAGGCTGTCGGCTGGTGGGCCCTGCTGGCCTTGGTGACGCTGCTGTCTTCGCC
 ACCCGCTTCCACCGCTTGGACGACGCCGCCACATCTGTTGGGATGAGACTCACTTTGAAAAATGGGAA
 GTTACTATATCAACCGTACATTTTTCTTTGATGTGACCCGCCCTGGGAAAGATGCTGATAGGTCTTGC
 TGGCTACCTGAGTGGATATGATGGTACCTTTTGTCCAGAAGCCTGGGATAAATATGAGCATCACAGC
 TACATGGGAATGAGAGGATTCTGTGCATCCTTGGCTCCTGGCTGGTCCCCTTTCCTACCTCACTGTAC
 TGGATCTGTCCAAGTCCCTCTCGGCAGCACTGCTCACAGCTGCCCTCCTCACCTTGGACAGGGATGCCT
 CACTCTGTCCCAGTACATCCTCCTGACCCCATCTGATGTTCTTCATCATGGCTGCCATGCTGAGCATG
 GTCAAGTACAACCTTTGGCCGACAGGCCCTTCTGCCCCCTGGTGGTTCTGGCTCAGCCTGACTGGCG
 TTAGTCTTGCTGGTGCTTAGGGGTCAAGTTTGTGGCCCTTTTATCATCCTTCAAGTGGGGCTGAACAC
 CATTGCAGACCTTTGGTACCTGTTCCGAGACCTCAGTCTTTTATTGGTACTGTGGGAAAACACCTGACT
 GCTCGTGTCTGTGCCTCATAGTGTGCCCTGGCTCTCTATACAGCCACCTTTGCTGTTCACTTCATGG
 TGCTGAGTAAAAGTGGCCCTGGTACGGTTTCTCAGTTCTGCCTTCCAGGCCGGCTTTTCAGGGAACAA
 CCTGCACAATGCTTCCATCCCTGAACACCTGGCCTACGGCTCTGTGATCACTGTGAAGAACCTCCGGATG
 GCCATCGGCTATCTGACTCCCACAGGCACCTACCCCGAGGGCATTGGTGGCCGTCAGCAGCAGGTCA
 CCACCTATTTGCACAAGGACTACAACAACCTGTGGATTATCAAGAAACATAACACAAAACCTCAGATCCCCT
 AGACCCTTCTTCCAGTGGAGTTTGAAGACATGGAGACATTATTCGACTAGAACACAAAAGAACTTCC
 CGGAACCTGACAGTCACTATCATGAGGCCCATGACCCGGAAGCACTATCAGGTCACCGGCTATGGCA
 TAAATGGAACAGGGGACTCAAATGATTTCTGGCGGATTGAGGTCGTAACAGAAAATTTGGAAACCGGAT
 CAAAGTGTGAGAAGTCGAATTCGTTTCCATCCATTTGGTACAGGTTGTGTCTGGGCTCCTCGGGAAAG
 GTTCTGCCAAGTGGGCTGGGAGCAGTTGGAAGTTACTTGCACCCCATACCTGAAAGAAACCTCAACT
 CCATCTGGAATGTGGAGGACCATATCAATCCCAAGTTGCCAAACATCAGCCTGGATGTGCTACAGCCCAG
 TTTTCTGAGATCTTGTGGAATCCACATGGTCATGATCCGGGGGAACAGTGGCCTCAAACCAAGGAC
 AATGAGTTCACGTCAAACCTGGCACTGGCCTATCAACTATCAGGGCCTACGCTTCTCAGGGGTCAATG
 ACACAGATTTCCGAGTCTATCTGCTTGGCAACCCGGTGGTTTGGTGGCTGAATCTGTTGAGCATCGCCCT
 CTACCTCCTCTCAGGGAGCATATTGCTGTAGCCATGCAGAGAGGGGCACGGCTGCCAGCGGAGGTTGCA
 GGGTTGTCCCAGGTCCTGCTGCGAGGAGGGCCAGGTCCTGCTCGGCTGGACACTCCATTACTTCCCGT
 TTTTCTGATGGGCCGGTCTCTACTTCCACCACTACTTCCCAGCCATGCTCTTCTCAAGCATGTTGAC
 AGGCATTTCTGTGGGACACCCTCTGCGGCTCTGTGCCTGGGGCTTGGCCTCATGGCCCTGGCGAGGGGC
 ATACATGTGGCGGAATCCTGAGCCTGCTCCTGGGAACGCCTACAGCTTCTACCTTCTCCACCTCTGG
 CTTACGGGATGGTTGGTCCCCTGGCCAGGACCCCAAGTCCAATGGCAGGACTAAGGTGGCTGGACTC
 ATGGGACTTT

ACGCGTACGCGGCCGCTCGAGCAGAAACTCATCTCAGAAGAGGATCTGGCAGCAAATGATATCCTGGATT
 ACAAGGATGACGACGATAAGGTTTAA

Protein Sequence: >RC206498 protein sequence
Red=Cloning site Green=Tags(s)

```
MPPATGGGLAESELPRRGRGCPQARAAGRDVAEEAVARSPKRPAGSRRFEAVGWWALLALVTLLSFA
TRFHRLDEPPHICWDETHFGKMGSYIINRTFFFVHPPLGKMLIGLAGYLSGYDGTFLFQKPGDKYEHHS
YMGMRGFCFAFLGSWLVPFAYLTVLDSLKSLSAALLTAALLTFDTGCLTSLQYILLDPILMFFIMAAMLSM
VKYNSCADRPFSAFWLWVSLTGVSLAGALGVKFFVGLFIIILQVGLNTIADLWYLFGLSLSLVTVGKHLT
ARVLCILVPLALYTATFAVHFVVLKSGPGDGFSSAFQARLSGNLHNASIPHELAYGSVITVKNLRM
AIGYLHSHRHLYPEGIGARQQVTTYLHKDYNLWIKKHNTNSDPLDPSFVPEFVRHGDIIRLEHKETS
RNLHSHYHEAPMTRKHYQVTGYGINGTGDSDNFWRIEVVNRKFGNRIKVLRSRIRFIHLVTGCVLGSSGK
VLPKWGWELVETCTPYLKETLNSIWNVEDHINPKLPNISLDVLPQSFPEILLESMMIRGNSGLKPKD
NEFTSKPWHWPINYOGLRFSGVNDTDFRVYLLGNPVVWNLNLSIALYLLSGSIIAVAMQRGARLPAEVA
GLSQVLLRGGQVLLGWLHYFPFFLMGRVLYFHYYFPAMLFSSMLTGILWDTLLRLCAWGLASWPLARG
IHVAGILSLLGTAYSFYLFHPLAYGMVGLAQDPQSPMAGLRWLDSDWF
```

TRTRPLEQKLISEEDLANDILDYKDDDDKV

Chromatograms: https://cdn.origene.com/chromatograms/mk6140_f02.zip

Restriction Sites: SgfI-MluI

Cloning Scheme:

Cloning sites used for ORF Shuttling:



* The last codon before the Stop codon of the ORF

ACCN: NM_013382

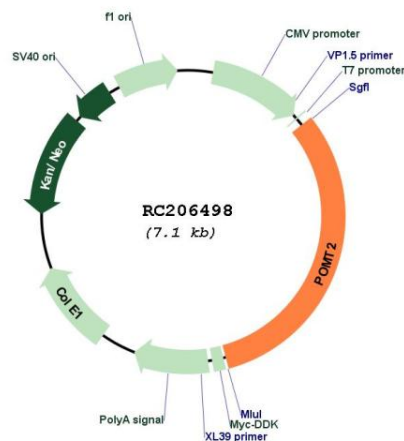
ORF Size: 2250 bp

OTI Disclaimer: The molecular sequence of this clone aligns with the gene accession number as a point of reference only. However, individual transcript sequences of the same gene can differ through naturally occurring variations (e.g. polymorphisms), each with its own valid existence. This clone is substantially in agreement with the reference, but a complete review of all prevailing variants is recommended prior to use. [More info](#)

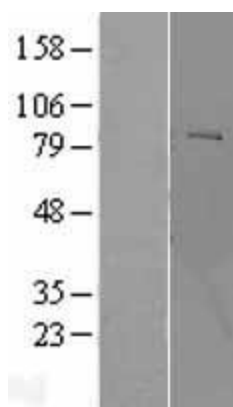
OTI Annotation: This clone was engineered to express the complete ORF with an expression tag. Expression varies depending on the nature of the gene.

Components:	The ORF clone is ion-exchange column purified and shipped in a 2D barcoded Matrix tube containing 10ug of transfection-ready, dried plasmid DNA (reconstitute with 100 ul of water).
Reconstitution Method:	<ol style="list-style-type: none"> 1. Centrifuge at 5,000xg for 5min. 2. Carefully open the tube and add 100ul of sterile water to dissolve the DNA. 3. Close the tube and incubate for 10 minutes at room temperature. 4. Briefly vortex the tube and then do a quick spin (less than 5000xg) to concentrate the liquid at the bottom. 5. Store the suspended plasmid at -20°C. The DNA is stable for at least one year from date of shipping when stored at -20°C.
RefSeq:	<u>NM_013382.7</u>
RefSeq Size:	4874 bp
RefSeq ORF:	2253 bp
Locus ID:	29954
UniProt ID:	<u>Q9UKY4</u>
Cytogenetics:	14q24.3
Protein Families:	Transmembrane
Protein Pathways:	O-Mannosyl glycan biosynthesis
MW:	84.2 kDa
Gene Summary:	The protein encoded by this gene is an O-mannosyltransferase that requires interaction with the product of the POMT1 gene for enzymatic function. The encoded protein is found in the membrane of the endoplasmic reticulum. Defects in this gene are a cause of Walker-Warburg syndrome (WWS).[provided by RefSeq, Oct 2008]

Product images:



Circular map for RC206498



Western blot validation of overexpression lysate (Cat# [LY402256]) using anti-DDK antibody (Cat# [TA50011-100]). Left: Cell lysates from untransfected HEK293T cells; Right: Cell lysates from HEK293T cells transfected with RC206498 using transfection reagent MegaTran 2.0 (Cat# [TT210002]).