

Product datasheet for **RC206497**

Granzyme M (GZMM) (NM_005317) Human Tagged ORF Clone

Product data:

Product Type:	Expression Plasmids
Product Name:	Granzyme M (GZMM) (NM_005317) Human Tagged ORF Clone
Tag:	Myc-DDK
Symbol:	Granzyme M
Synonyms:	LMET1; MET1
Mammalian Cell Selection:	Neomycin
Vector:	pCMV6-Entry (PS100001)
E. coli Selection:	Kanamycin (25 ug/mL)
ORF Nucleotide Sequence:	>RC206497 ORF sequence Red=Cloning site Blue=ORF Green=Tags(s)

TTTTGTAATACGACTCACTATAGGGCGCCGGGAATTCGTCGACTGGATCCGGTACCGAGGAGATCTGCC
GCC**CGATCGCC**

ATGGAGGCTGCGTGTCTTCACTGCTGGTGTGGCCCTGGGGCCCTGTCAGTAGGCAGCTCCTTTGGGA
CCCAGATCATCGGGGCGGGAGGTGATCCCCACTCGCGCCGTACATGGCCTCACTGCAGAGAAATGG
CTCCCACCTGTGCGGGGTGTCTGGTGCACCCAAAGTGGGTGCTGACGGCTGCCACTGCCTGGCCAG
CGGATGGCCAGCTGAGGCTGGTGTGGGGCTCCACACCCTGGACAGCCCGGTCTCACCTCCACATCA
AGGCAGCCATCCAGCACCTCGCTACAAGCCCGTCCCTGCCCTGGAGAACGACCTCGCGTCTTCAGCT
GGACGGGAAAGTGAAGCCAGCCGACCATCCGGCCGTTGGCCCTGCCAGTAAGCGCCAGGTGGTGGCA
GCAGGGACTCGGTGCAGCATGGCCGGCTGGGGGTGACCCACCAGGGCGGGCGCCTGTCCCGGGTGCTGC
GGGAGCTGGACCTCCAAGTGTGGACACCCGCATGTGTAACAACAGCCGCTTCTGGAACGGCAGCCTCTC
CCCCAGCATGGTCTGCCTGGCGGCCGACTCCAAGGACCAGGCTCCCTGCAAGGGTGACTCGGGCGGGCC
CTGGTGTGTGGCAAAGGCCGGGTGTTGGCCGGAGTCTGTCTTCAGCTCCAGGGTCTGCACTGACATCT
TCAAGCCTCCCGTGGCCACCGTGTGGCGCCTACGTGTCTGGATCAGGAAGGTACCGGCCGATCGGC
C

ACGCGTACGCGGCCGCTCGAGCAGAACTCATCTCAGAAGAGGATCTGGCAGCAAATGATATCCTGGATT
ACAAGGATGACGACGATAAGGTTTAA



[View online »](#)

Protein Sequence: >RC206497 protein sequence
 Red=Cloning site Green=Tags(s)

MEACVSSLLVLALGALSVGSSFGTQIIGGREVIPHSRPYMASLQRNGSHLCGGVLVHPKWVLTAAHCLAQ
 RMAQLRLVLGLHTLDSPLTFHIKAAIQHPRYKVPVPALENDLALLQLDGKVKPSRTIRPLALPSKRQVVA
 AGTRCSMAGWGLTHQGGRLSRVLRDLQVLDTRMCNNSRFWNGSLSPSMVCLAADSKDQAPCKGDSGGP
 LVCGKGRVLAGVLSFSSRVCTDIFKPPVATAVAPYVSWIRKVTGRSA

TRTRPLEQKLISEEDLAANDILDYKDDDDKV

Chromatograms: https://cdn.origene.com/chromatograms/mk6327_h08.zip

Restriction Sites: SgfI-MluI

Cloning Scheme:



ACCN: NM_005317

ORF Size: 771 bp

OTI Disclaimer: The molecular sequence of this clone aligns with the gene accession number as a point of reference only. However, individual transcript sequences of the same gene can differ through naturally occurring variations (e.g. polymorphisms), each with its own valid existence. This clone is substantially in agreement with the reference, but a complete review of all prevailing variants is recommended prior to use. [More info](#)

OTI Annotation: This clone was engineered to express the complete ORF with an expression tag. Expression varies depending on the nature of the gene.

Components: The ORF clone is ion-exchange column purified and shipped in a 2D barcoded Matrix tube containing 10ug of transfection-ready, dried plasmid DNA (reconstitute with 100 ul of water).

Reconstitution Method:

1. Centrifuge at 5,000xg for 5min.
2. Carefully open the tube and add 100ul of sterile water to dissolve the DNA.
3. Close the tube and incubate for 10 minutes at room temperature.
4. Briefly vortex the tube and then do a quick spin (less than 5000xg) to concentrate the liquid at the bottom.
5. Store the suspended plasmid at -20°C. The DNA is stable for at least one year from date of shipping when stored at -20°C.

RefSeq: [NM_005317.3](#)

RefSeq Size: 958 bp

RefSeq ORF: 774 bp

Locus ID: 3004

UniProt ID: [P51124](#)

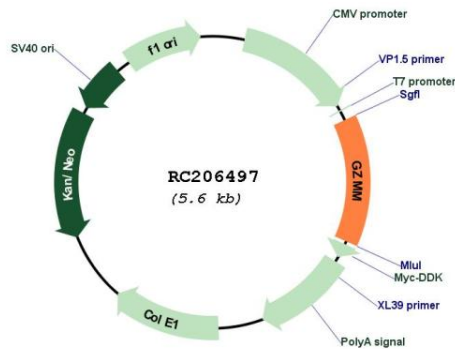
Cytogenetics: 19p13.3

Protein Families: Druggable Genome, Protease, Secreted Protein, Transmembrane

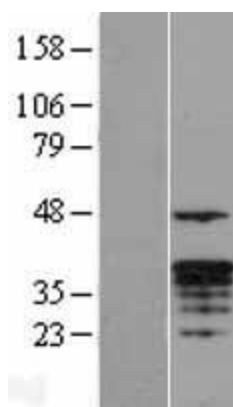
MW: 27.4 kDa

Gene Summary: Human natural killer (NK) cells and activated lymphocytes express and store a distinct subset of neutral serine proteases together with proteoglycans and other immune effector molecules in large cytoplasmic granules. These serine proteases are collectively termed granzymes and include 4 distinct gene products: granzyme A, granzyme B, granzyme H, and the protein encoded by this gene, granzyme M. Two transcript variants encoding different isoforms have been found for this gene. [provided by RefSeq, Apr 2012]

Product images:



Circular map for RC206497



Western blot validation of overexpression lysate (Cat# [LY417389]) using anti-DDK antibody (Cat# [TA50011-100]). Left: Cell lysates from untransfected HEK293T cells; Right: Cell lysates from HEK293T cells transfected with RC206497 using transfection reagent MegaTran 2.0 (Cat# [TT210002]).